

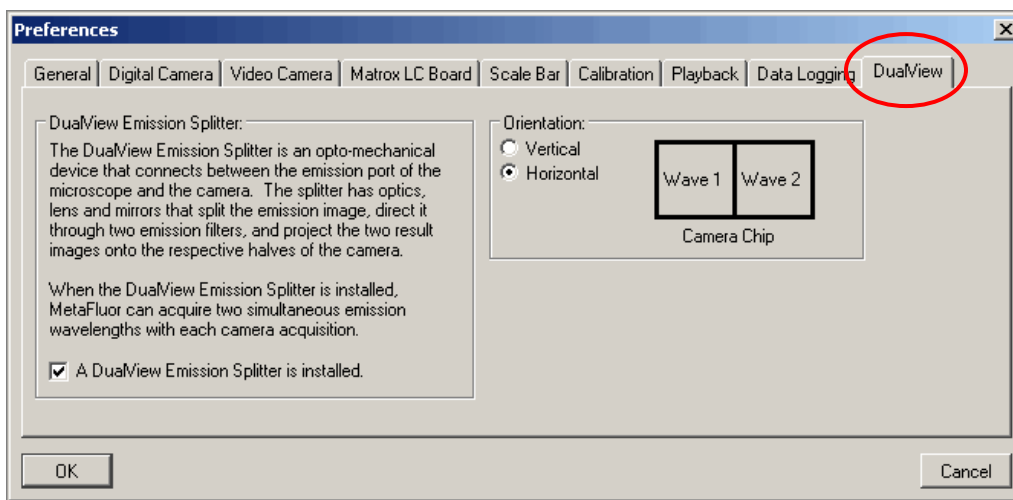
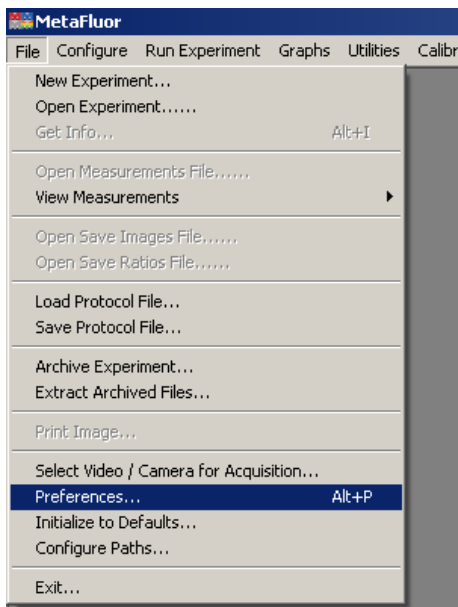
Configuring a DualView System in MetaFluor® Software

Overview

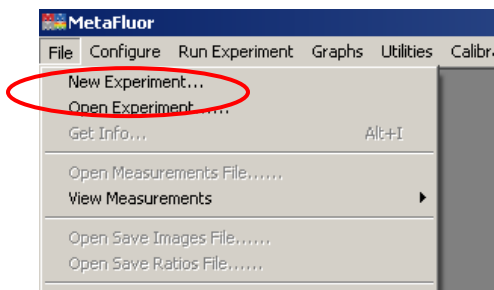
Configuring a DualView system in MetaFluor is slightly different compared to how it is done in MetaMorph® Software. Once configured, MetaFluor Software will split the images into the different wavelength windows before acquisition compared to MetaMorph Software, where the split is post acquisition.

To configure the DualView in MetaFluor Software:

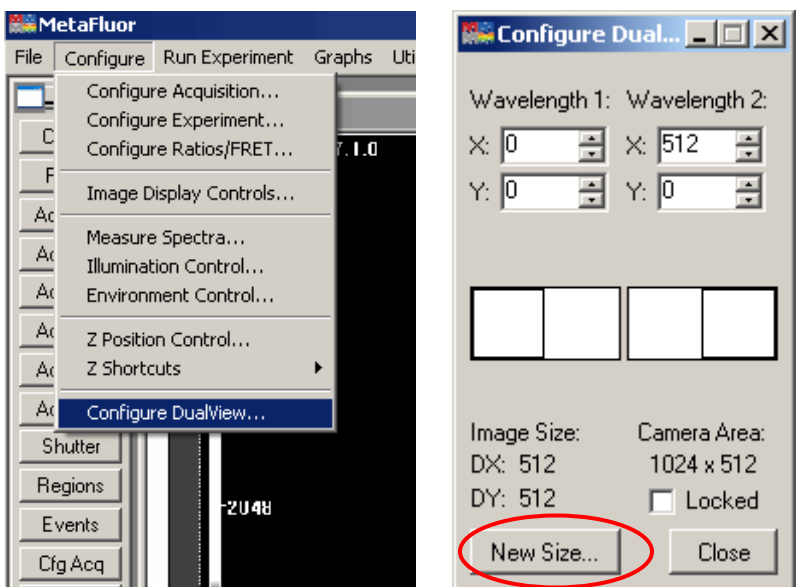
1. Enable the option in the Preferences dialog of the File menu before starting a new experiment.



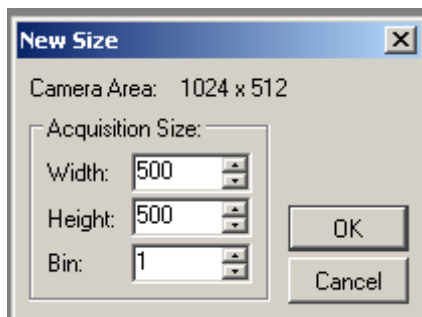
2. Start a New Experiment



3. Select *Configure DualView* in the Configure Menu to set the individual wavelength regions on the camera chip and the size of the wavelength windows. By default the area is half the chip in X or Y based on the orientation setting in the Preferences dialog (Horizontal or Vertical orientation) by full height or width respectively.



4. To adjust the region area, first press the *New Size...* button, then specify a new region size that is smaller than half the chip size. This allows areas on the chip to move the regions around. If left at default, the regions have no extra pixels to move to and will not adjust at all.



5. Alignment can be done by starting an acquisition and looking at the ratio image, adjusting the X, Y values in the Configure DualView dialog as needed. As in MetaMorph Software, it is best to

align the wavelengths using the knobs on the device first before doing the final adjustments within the software.

If there are any further questions, please contact Technical support at 800-635-5577 x1820 or support.dtn@moldev.com.