

Multi Dimensional Acquisition:

Display and Summary Tabs

Abstract

The Multi Dimensional Acquisition (MDA) dialog box provides tools and options for most multidimensional applications. This note will describe the Display and Summary Tabs. For further information on Multi Dimensional Acquisition see T20117, T20121, T20122, T20123, T20124, T20125, T20126, T20127 and T20128.

ARTICLE #T20129

PRODUCTS
MetaMorph®
Version 7.0 or above

CREATED
27-August-2009

LAST UPDATED
27-August-2009

The Display Tab

The Display tab is where the acquisition display can be configured for the experiment.

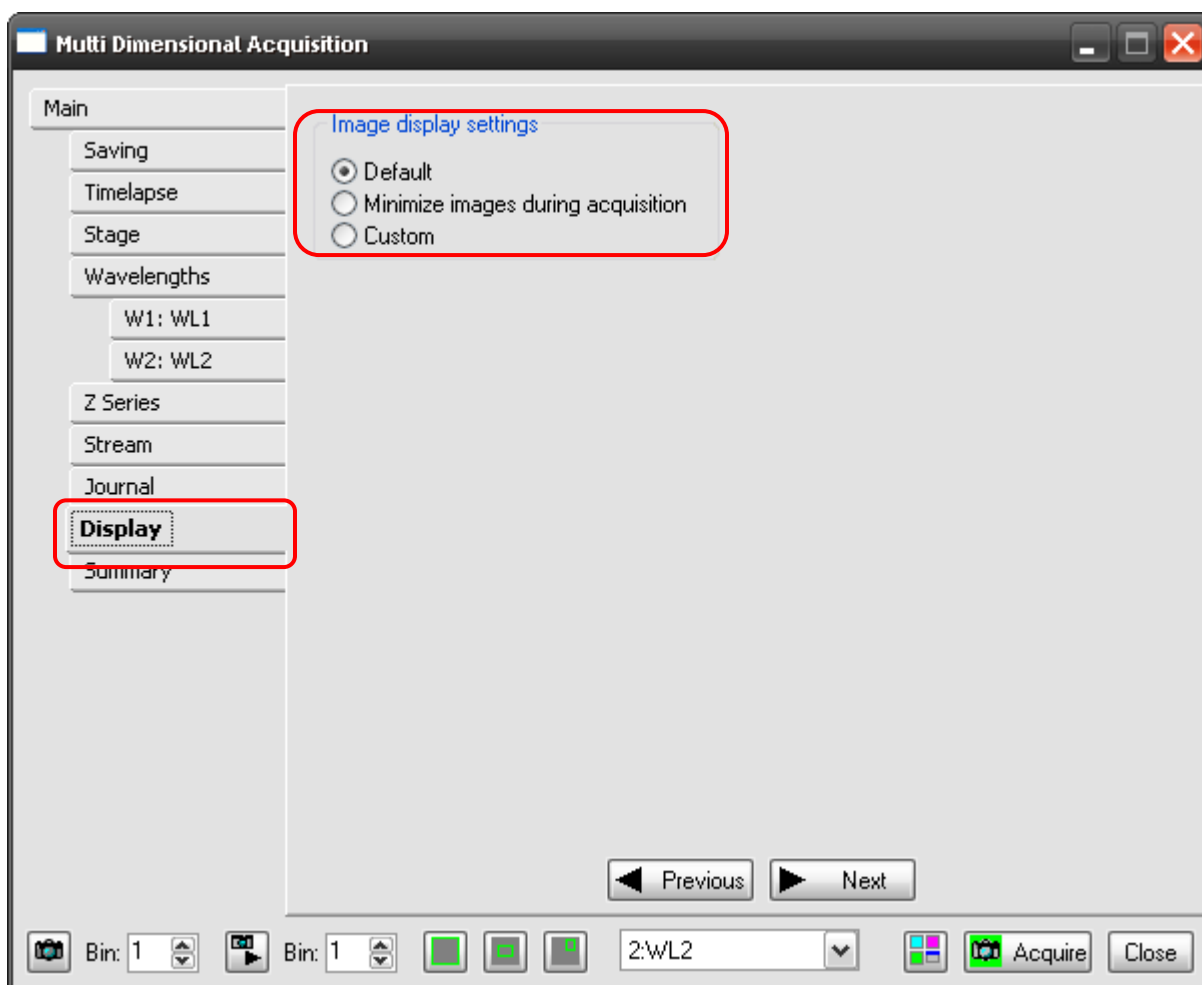


Image display settings

Default

- Uses the MetaMorph[®] software default settings for displaying images and dialog boxed during acquisition. The default display settings tile and autoscale all acquired images, and ensure that the status dialog box is unobstructed.

Minimize images during acquisition

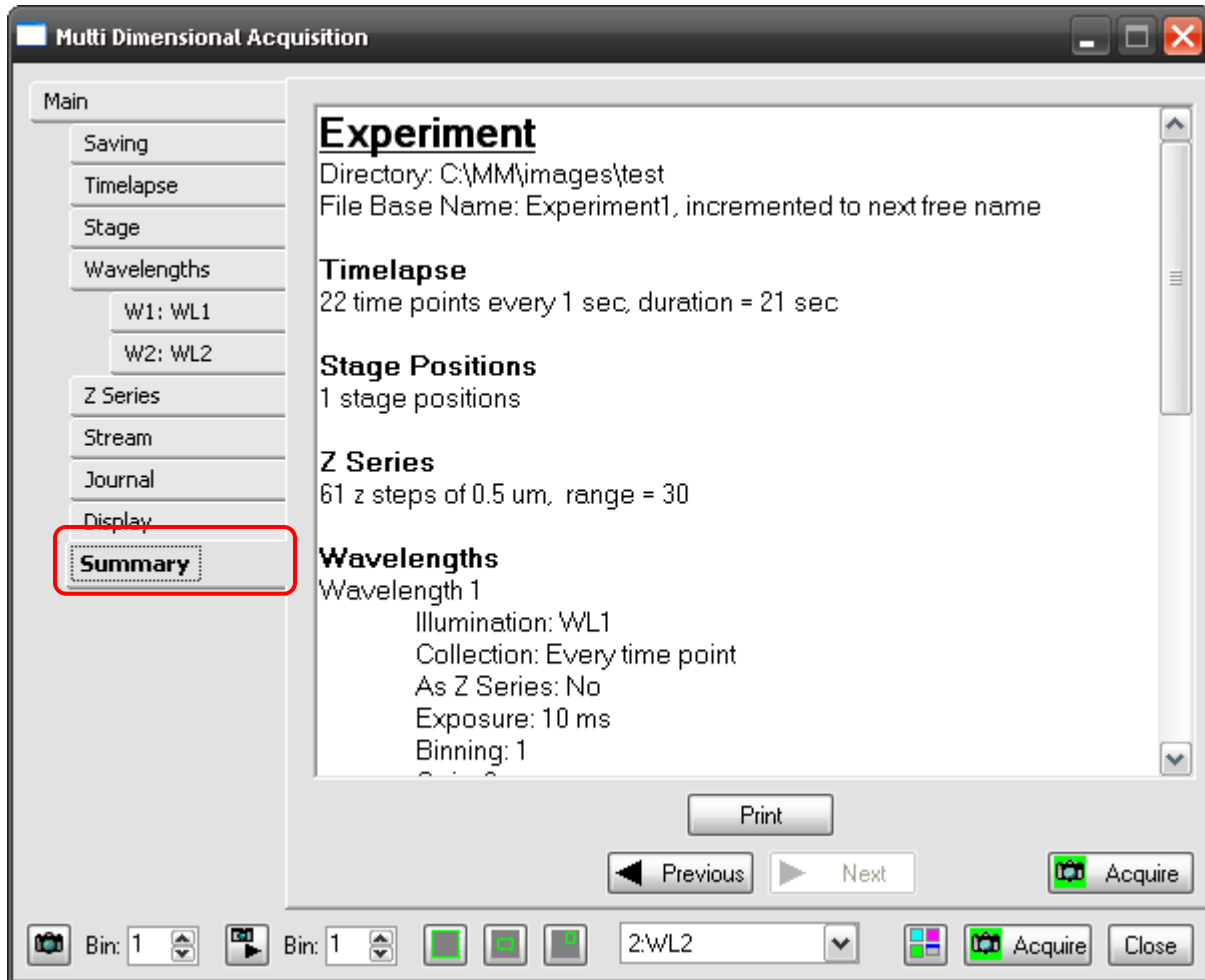
- Causes each image to be minimized as it is acquired.

Custom

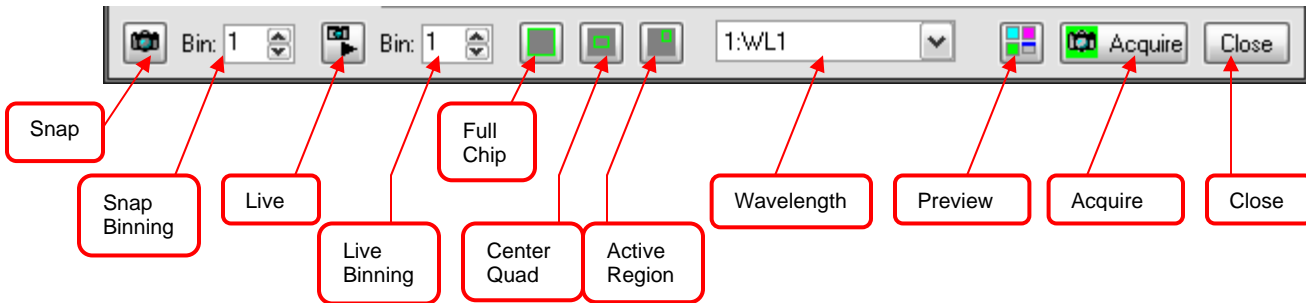
- Allows a custom configuration of the MetaMorph[®] software desktop for acquisition.

The Summary Tab

The Summary tab is where a summary of the acquisition can be viewed and printed.



Across the bottom of the MDA dialog box are the functions for snapping an image, binning, live, live binning, chip dimensions, wavelength chooser, preview, acquire and close. These options are always available no matter which tab is selected.



If there are any further questions, please contact Technical support at 800-635-5577 x1820 or support.dtn@moldev.com.