

Multi Dimensional Acquisition:

Stream Tab

Abstract

The Multi Dimensional Acquisition (MDA) dialog box provides tools and options for most multidimensional applications. This note will describe the Stream Tab. For further information on Multi Dimensional Acquisition see T20117, T20121, T20122, T20123, T20124, T20125, T20126, T20127 and T20129.

The Stream Tab

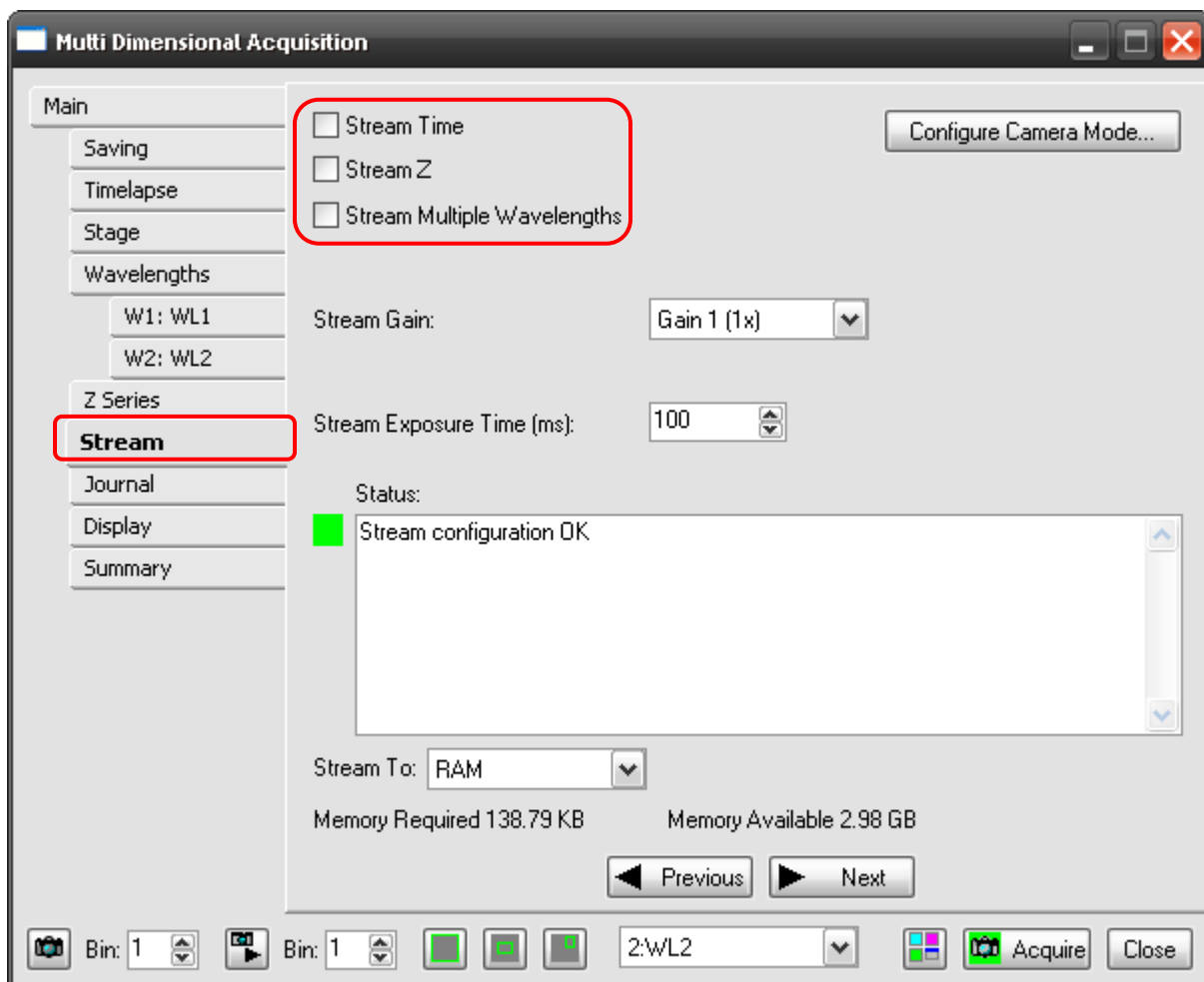
The Stream tab is where a streaming acquisition can be configured for the experiment. This tab will only be displayed if the appropriate hardware is installed and detected by the MetaMorph® software.

ARTICLE #T20128

PRODUCTS
MetaMorph®
Version 7.0 or above

CREATED
27-August-2009

LAST UPDATED
27-August-2009



Stream Time

- Designates that MetaMorph[®] software collect your experiment image sequence as single continuous data stream to RAM. When streaming time, the entire experiment is stored in RAM before being saved. In this case, all other dimensions used in the experiment must be able to stream as well. If you chose not to stream time, you can still stream other dimensions. However, in this instance, the other dimensions are streamed and then saved to disk before moving to the next time point. This enables you to capture Z and/or wave "snapshots." Using this method, you do not need to consider the amount of available RAM when determining the number of time points to acquire. As a benefit of this method, you can specify a time delay between snapshots.

Stream Z

- Designates that MetaMorph[®] software collect your Z series-based experiment image sequence as a continuous data stream to RAM. You must have a Z motor that supports streaming for this option to be available.

Stream Multiple Wavelengths

- Designates streaming of multiple wavelengths. When streaming multiple wave lengths, you must set the Stream Exposure Time in milliseconds.

Stream Gain

- Sets the range of sensitivity and signal strength for the camera

Stream Exposure Time (ms)

- Sets the streaming exposure time (in milliseconds).

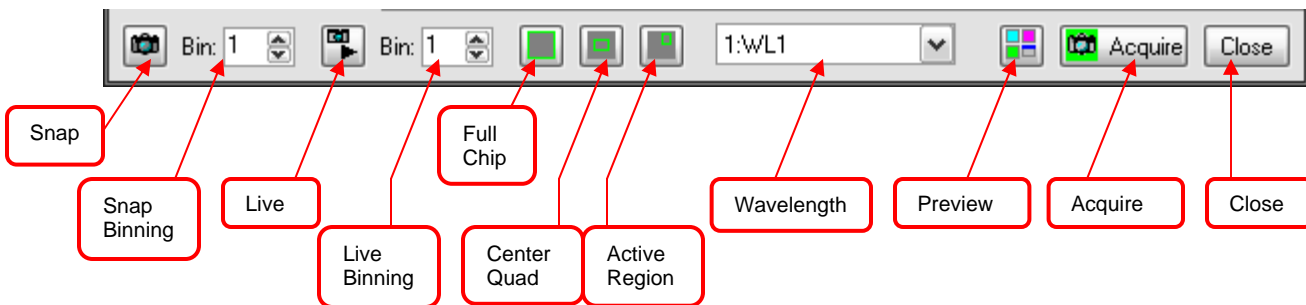
Status

- Displays a status message about any conflicts resulting from your current Multi Dimensional Acquisition dialog box configuration for streaming. When a conflict exists, a yellow or red square is displayed on the Stream tab. Yellow indicates that acquisition can occur, but that there are settings that are not ideally configured. Red indicates a major setting conflict; acquisition cannot be completed. If neither a yellow or red square are present on the Stream tab, the Status should indicate OK, and normal Stream Acquisition can begin.

Stream To

- Specifies the location to which to stream your image data. For example, choose RAM or choose real-time hard disk.

Across the bottom of the MDA dialog box are the functions for snapping an image, binning, live, live binning, chip dimensions, wavelength chooser, preview, acquire and close. These options are always available no matter which tab is selected.



If there are any further questions, please contact Technical support at 800-635-5577 x1820 or support.dtn@moldev.com.