

Multi Dimensional Acquisition:

Stage Tab

Abstract

The Multi Dimensional Acquisition (MDA) dialog box provides tools and options for most multidimensional applications. This note will describe the Stage Tab. For further information on Multi Dimensional Acquisition see T20117, T20121, T20122, T20124, T20125, T20126, T20127, T20128 and T20129. If you have a hardware focus drift compensator on your microscope, please refer to T20058 and T20118.

The Stage Tab

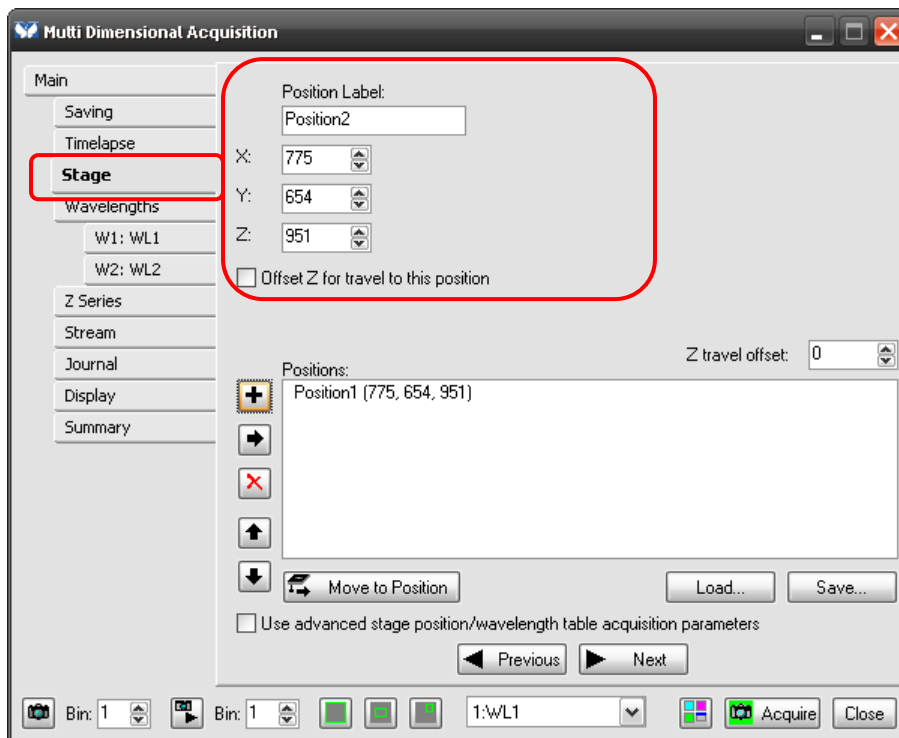
The Stage tab is where the stage portion of the experiment is elaborated upon. Positions are chosen and can be saved and loaded from this tab. This tab will only be displayed if the appropriate hardware is installed and detected by the MetaMorph® software.

ARTICLE #T20123

PRODUCTS
MetaMorph®
Version 7.0 or above

CREATED
23-June-2009

LAST UPDATED
02-September-2009



Position Label

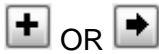
→ Designates a unique identifier for the currently displayed position. Use the default position label or enter your own label name.

X, Y, and Z

→ Indicates the coordinates of the current stage position. You can change the stage position by entering new values into these boxes or by using a joystick.

Offset Z for travel to this position

→ Specifies distance to move the Z motor before moving the stage. The Z motor will return to its original position after the stage has moved.



→ Adds the current position to the Positions box. The Positions Box lists the Position Label name and the X, Y, and Z coordinates of the position.



→ Removes the selected position from the Positions box.

Positions

→ Contains the currently defined positions. Double-clicking a position will move the stage to the selected position.

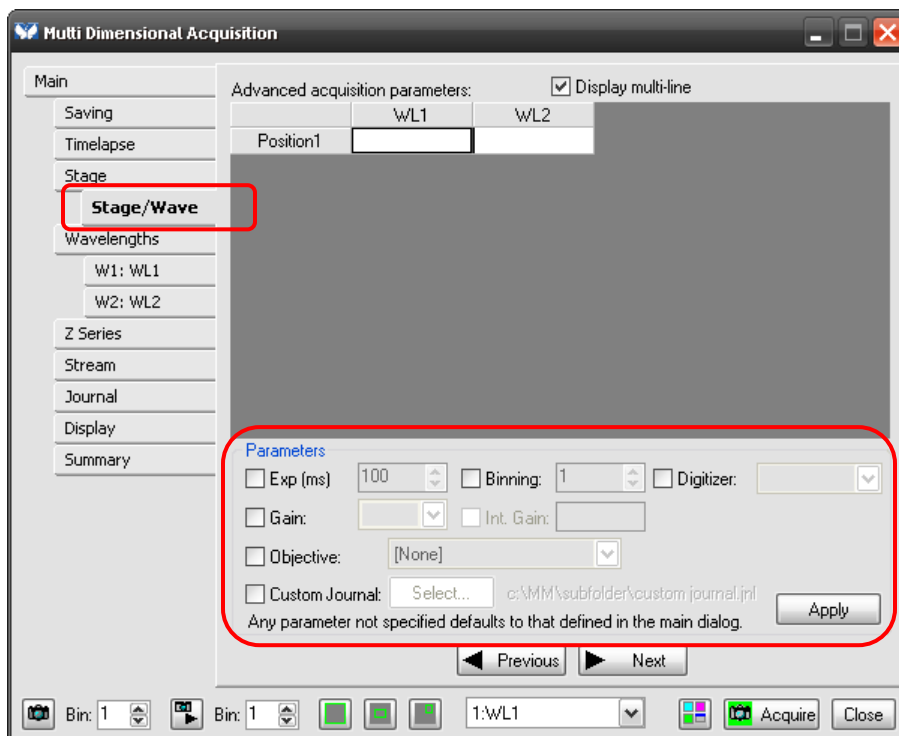
→  and  moves the selected stage position either up or down in the list respectively.

Move to Position button  Move to Position

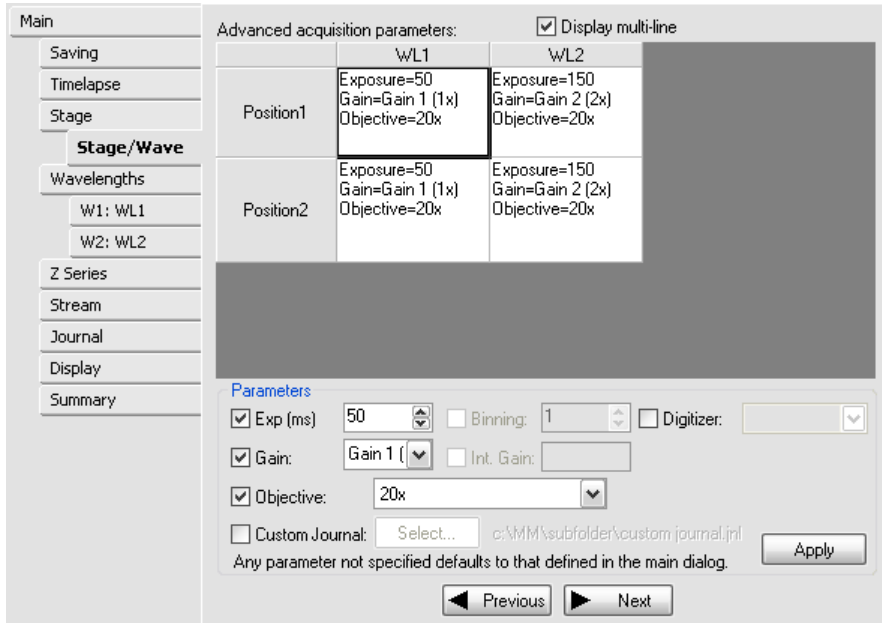
→ Moves the stage to a specific position without adding the new position to the positions box or moves the stage to the position selected in the Positions box.

Use advanced stage position/wavelength table acquisition parameters

Using the check box displayed above will add a tab under the stage tab. This allows customization for each stage position at each wavelength. Multiple objectives can even be applied to each position and/or wavelength. Simply select the position/wavelength box to which to apply the parameters, select appropriate parameters then push the Apply button.



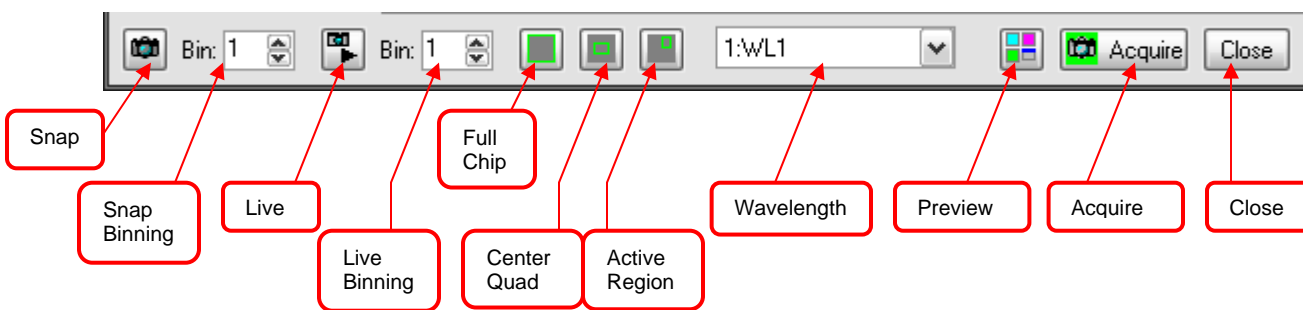
It should look something like the example shown below.



The conditions chosen will be displayed in the appropriate box for each position and wavelength.

Using the advanced stage option allows the user a greater flexibility for acquiring several sites on a single slide or multiwell slide, as well as multiwell plates, in a single experiment. It is also helpful when a specimen contains multiple cell types and/or varying thicknesses per stage position. This feature allows multiple exposures and gains to prevent photobleaching or underexposing.

Across the bottom of the MDA dialog box are the functions for snapping an image, binning, live, live binning, chip dimensions, wavelength chooser, preview, acquire and close. These options are always available no matter which tab is selected.



If there are any further questions, please contact Technical support at 800-635-5577 x1820 or support.dtn@moldev.com.