

Multi Dimensional Acquisition:

Main and Saving Tabs

Abstract

The Multi Dimensional Acquisition (MDA) dialog box provides tools and options for most multidimensional applications. This note will describe the Main and Saving Tabs. For further information on Multi Dimensional Acquisition see T20117, T20122, T20123, T20124, T20125, T20126, T20127, T20128 and T20129. If you have a hardware focus drift compensator on your microscope, please refer to T20058 and T20118.

ARTICLE #T20121

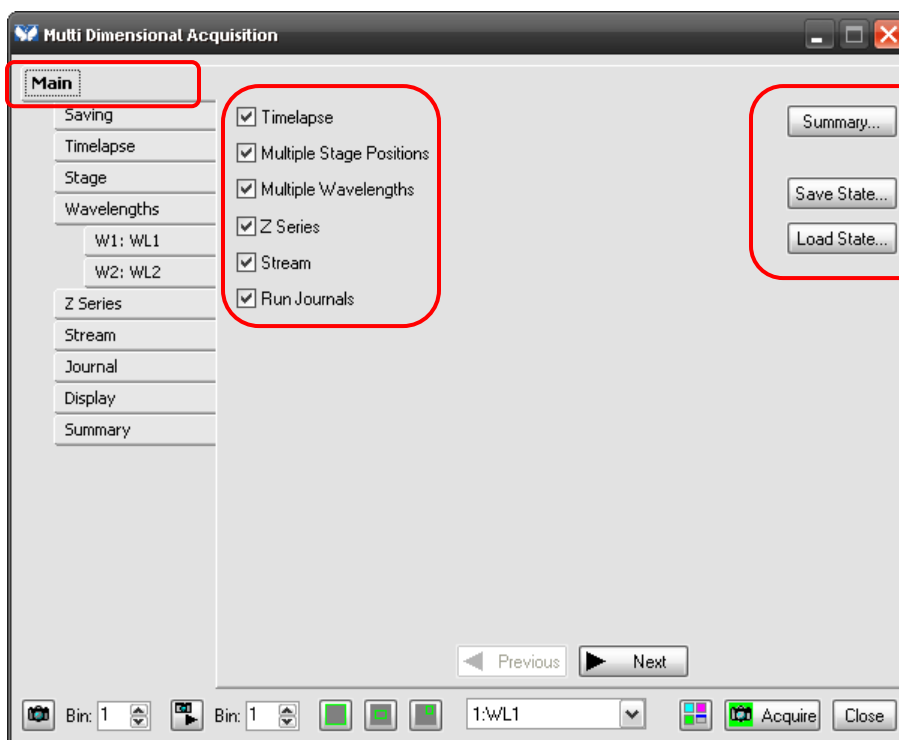
PRODUCTS
MetaMorph®
Version 7.0 or above

CREATED
23-June-2009

LAST UPDATED
23-June-2009

The Main Tab

The Main tab is where the parameters of the experiment are chosen by checking the boxes next to the options listed. It is also where the parameters can be viewed, saved and loaded.

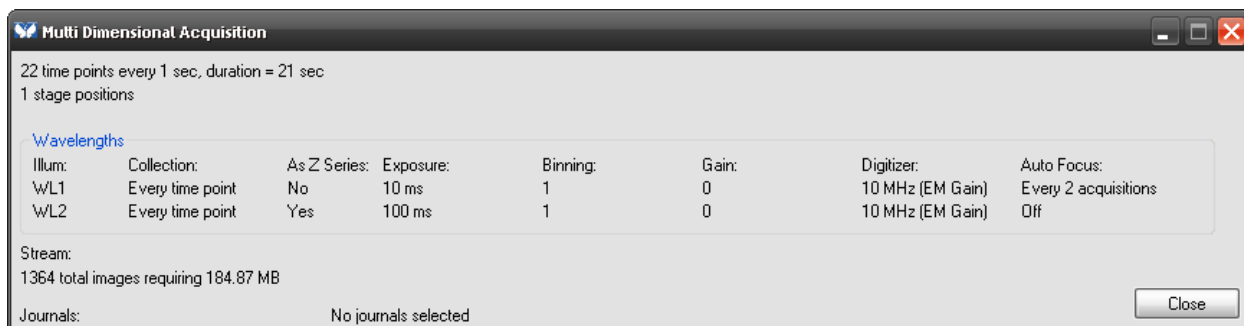


Timelapse, Multiple Stage Positions, Multiple Wavelengths, Z Series, Stream and Run Journals.

- Indicates the active dimensions based on the installed devices. Also indicates available functions and options, such as *Stream* and *Run Journals*. Click the boxes of the dimensions you want to include in your acquisition. The dimensions and options in this list will vary depending on which devices are installed on your computer. For example, if you do not have a Z motor installed, the *Z Series* option and tab will not be present. To activate the associated settings tab for the dimension or option, click the checkbox next to the dimension or option name.

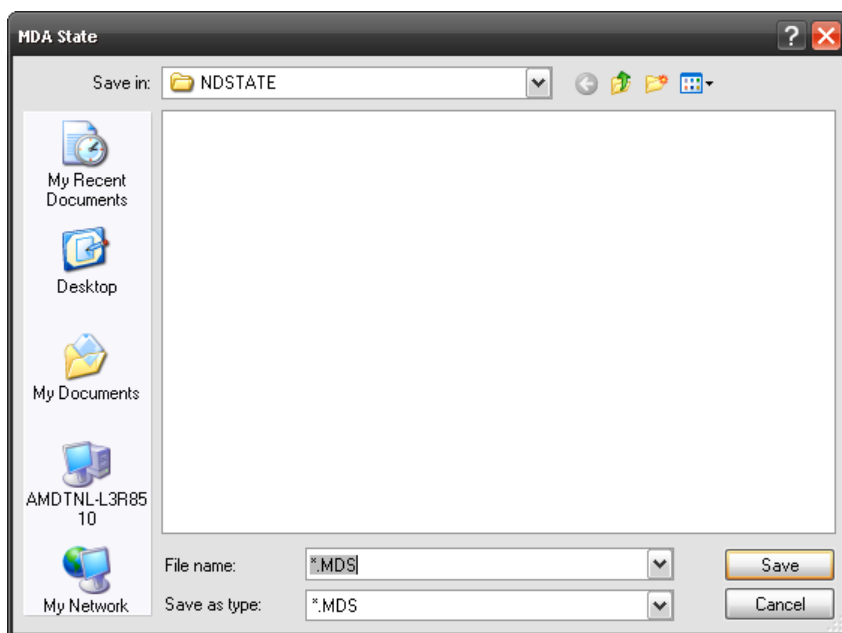
Summary button

- Opens the Multi Dimensional Acquisition Summary dialog box. This dialog box indicates your current MDA Acquisition configuration including the number time points, the time interval, the acquisition duration, the number of Z steps, step spacing, step range, the total number of images, and the amount of memory required. Also, for each wavelength, the wavelength illumination name, the frequency of collection, whether it is a Z series, the exposure time, and whether autofocus is on or off.



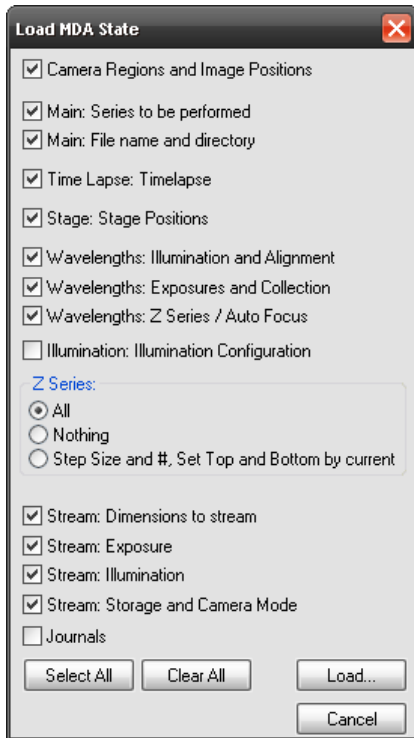
Save State button

- Opens the MDA State (save file) dialog box. Use Save State to save your data set acquisition configuration settings to a *.MDS state file. All configurable information in the dialog is saved to the state file, including image display parameters. States saved from an experiment can be applied to new experiments using Load State.

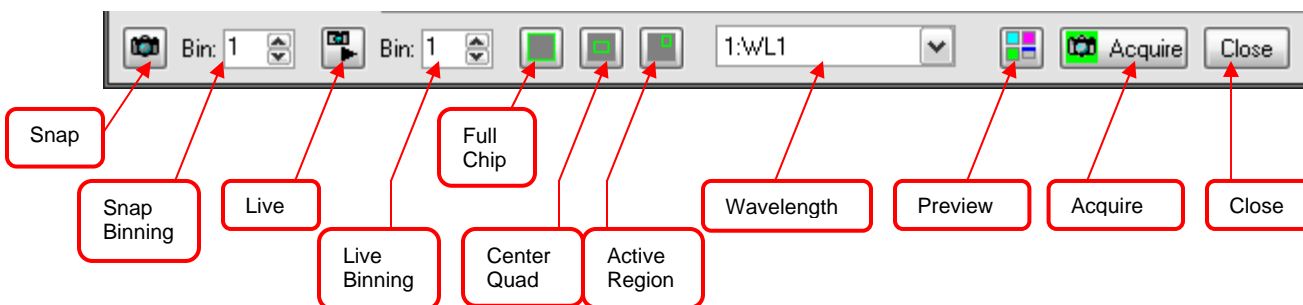


Load State

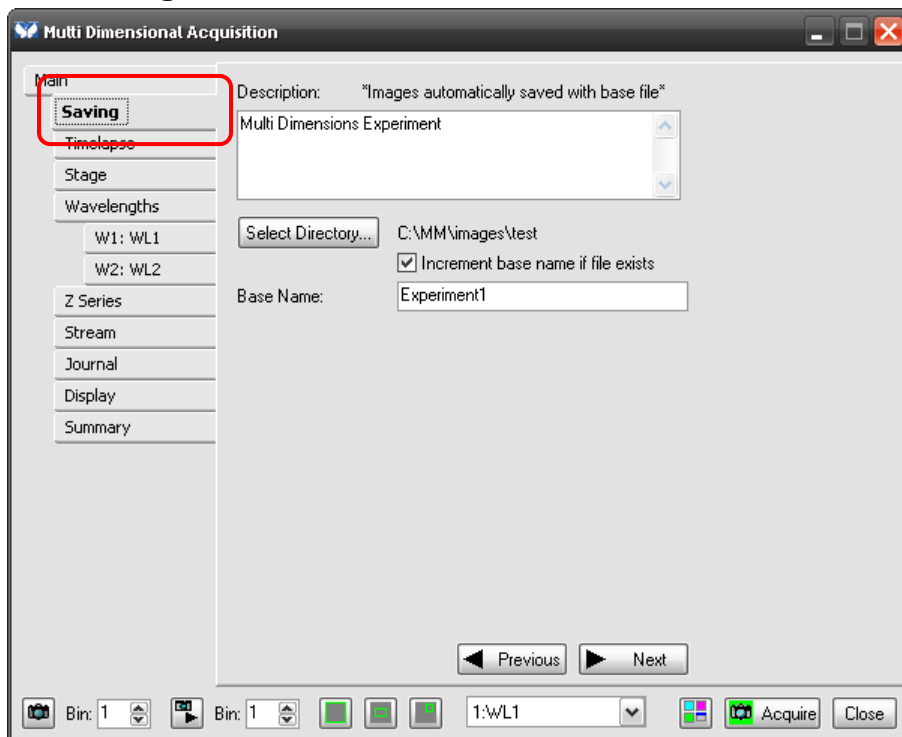
- Opens the Load MDA State dialog box. Use Load State to load data set conditions saved in a *.MDS state file during a previous experiment. Click the appropriate state check box(es) to include or exclude specific states from loading into your new experiment.



Across the bottom of the dialog box are the functions for snapping an image, binning, live, live binning, chip dimensions, wavelength chooser, preview, acquire and close. These options are always available no matter which tab is selected.



The Saving Tab



Description

- Attaches an annotation to your experiment data set. Type a description of your experiment in this box (optional).

Select Directory

- Opens the Browse for Folder dialog box. Select the directory in which you want to store your data set.

Increment base file name if file exists

- Detects an existing *.nd file and assigns the detected name as a base file name for new experiments. If checked, MetaMorph® software looks for an existing *.nd file, and increments the numerical value sequentially. If a *.nd file without a numerical value is detected, a one (1) is appended to the file name. Check this box to use an existing *.nd file name in the current directory as your experiment name. MetaMorph® software will use and automatically increment this name until you specify a different base file name in the Base Name box. If a *.nd file is not detected, type a name in the Base Name box.

Base Name

- Indicates a default base file name (experiment1.nd) and enables you to change the base file name. Type the name of the file you want to assign as your base file name to your experiment.

NOTE: If your base file name includes reserved characters such as "/" or "%," the reserved character is replaced by a hyphen (-) when the file is saved; however, the reserved characters are maintained in the .nd file so they can be used by the Review Screen Data and the Screen Data Utilities commands.

If there are any further questions, please contact Technical support at 800-635-5577 x1820 or support.dtn@moldev.com.