

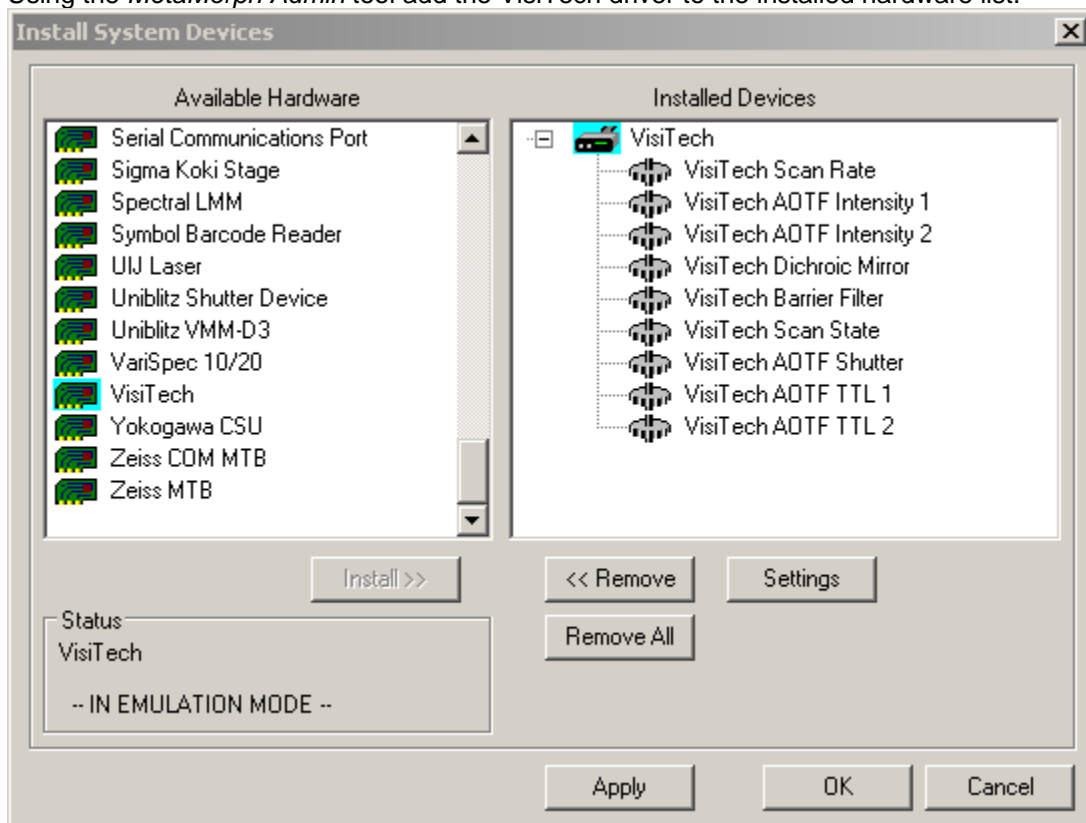
VTI Infinity3 Scanhead Driver installation

Overview

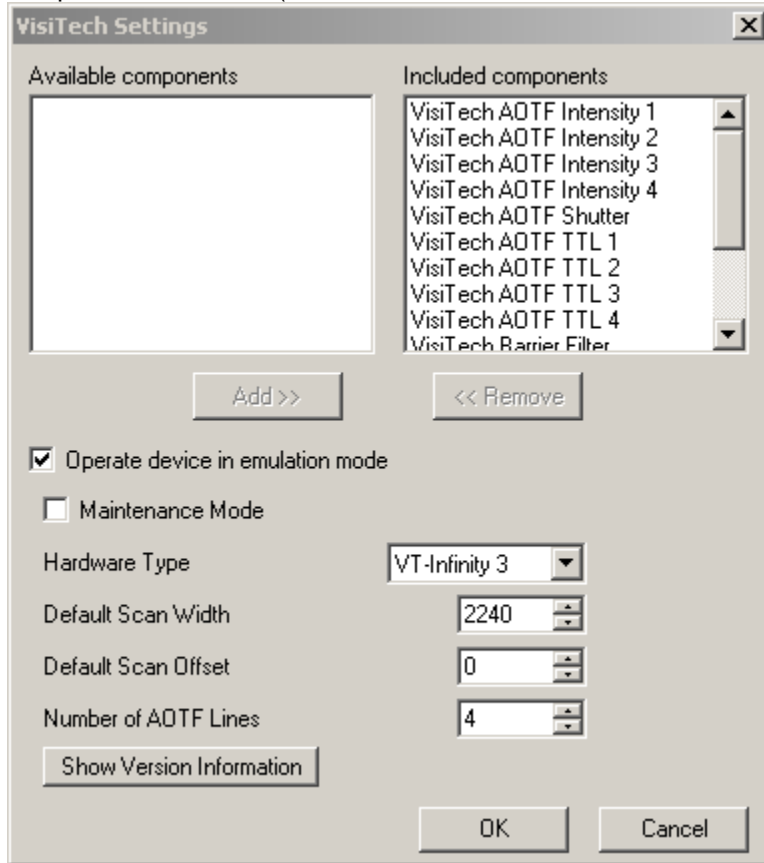
- The Infinity3 driver offers MetaMorph® software the ability to control all features of the Infinity3 confocal scanner available from VisiTech International. This includes a dedicated interactive user interface and access to all Infinity3 controls via illumination settings.

Installation instructions

1. Install the VIT API version 3.1.0.1. This is a zip file distributed with the Infinity3 and contains a standard "Setup.exe" file that needs to be run.
2. Using the *MetaMorph Admin* tool add the VisiTech driver to the installed hardware list.

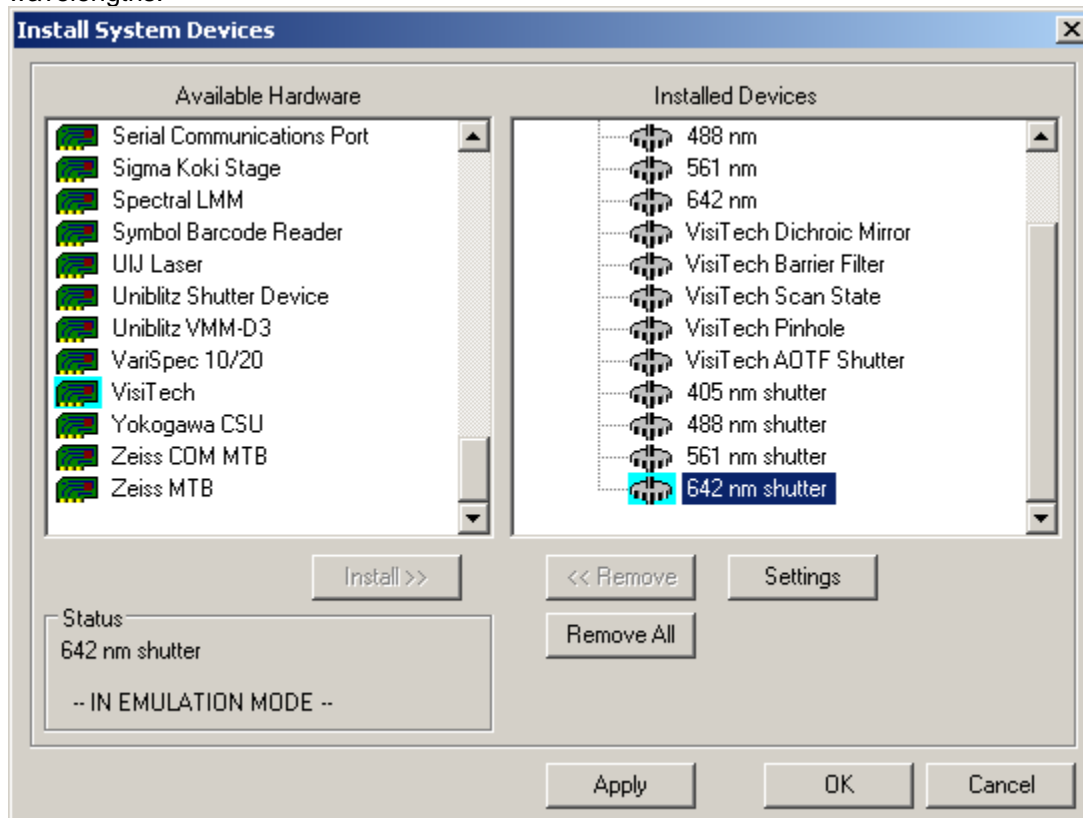


3. Settings can be changed in the normal manner by selecting the “Settings” button. You should setup as shown below (note: emulation mode should not be checked):

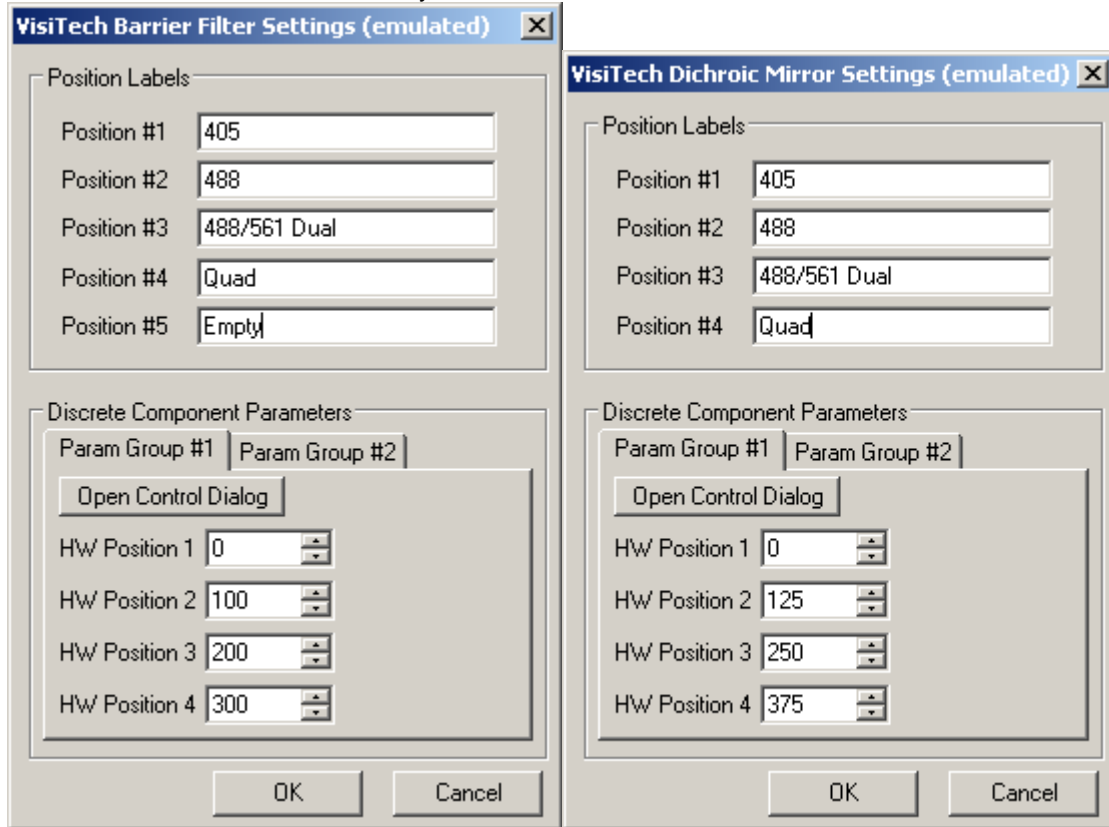


Number of AOTF lines should be set to the total number of lasers present in the system.

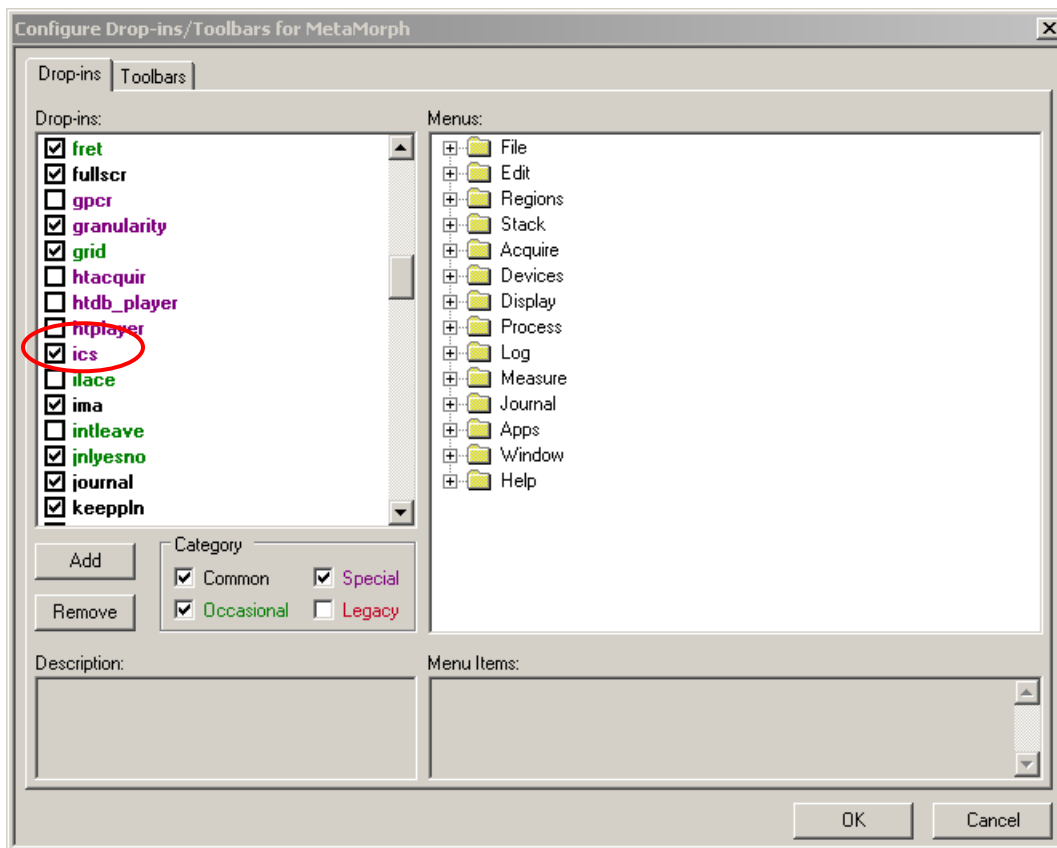
4. The interface can be further customized by changing the label on the individual components. In particular, the individual AOTF control lines should be named to match the corresponding laser wavelengths.



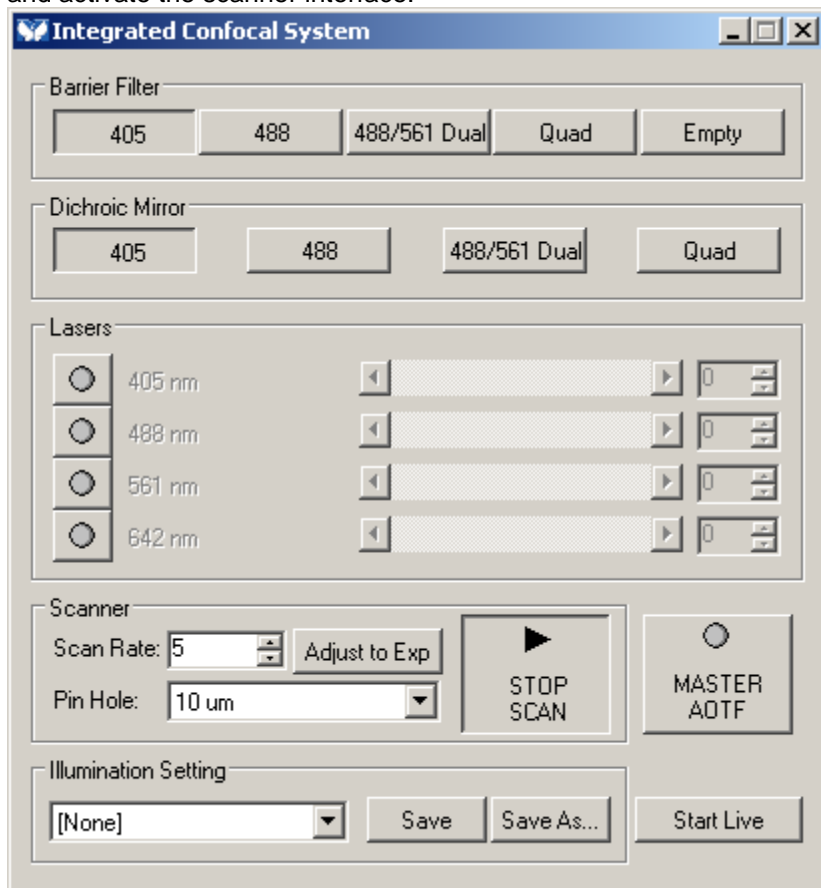
5. The barrier and dichroic filters should then be modified to show the filters currently installed in the scanhead. These details are usually shown on a sticker on the outside of the scanhead.



6. Using the “Drop-ins/Toolbars” button in *MetaMorph Admin* tool and make sure the “ics” drop-in is checked.



7. Start the MetaMorph[®] software. In the “Devices” menu select “Integrated Confocal System...” and activate the scanner interface.



8. The scanner components will also appear in the “Configure Illumination...” dialog so that different configurations can be created and used within the MDA.

