

Configuring Parallel (LPT) ports for use within the Meta Imaging Series® software

Overview

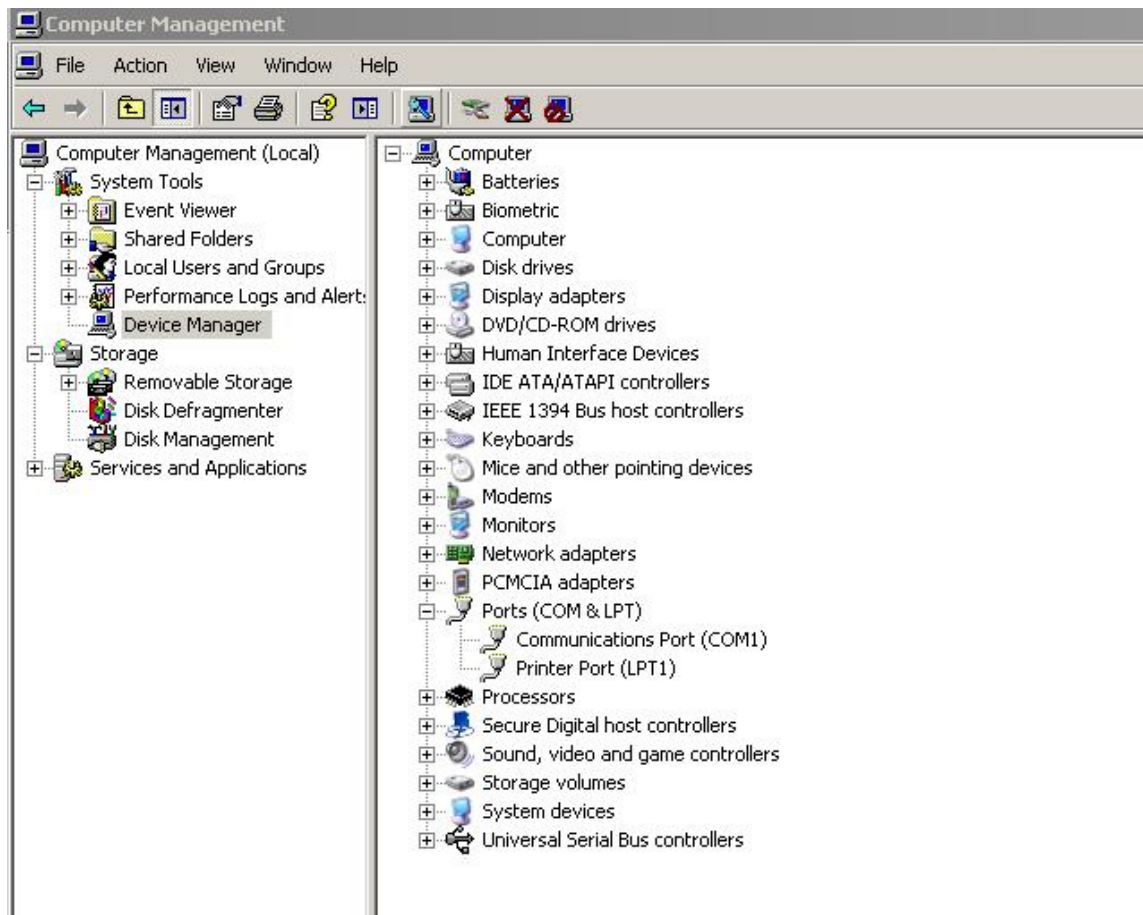
- Scope of issue
- Service confirmation
- Registry changes

Scope of Issue

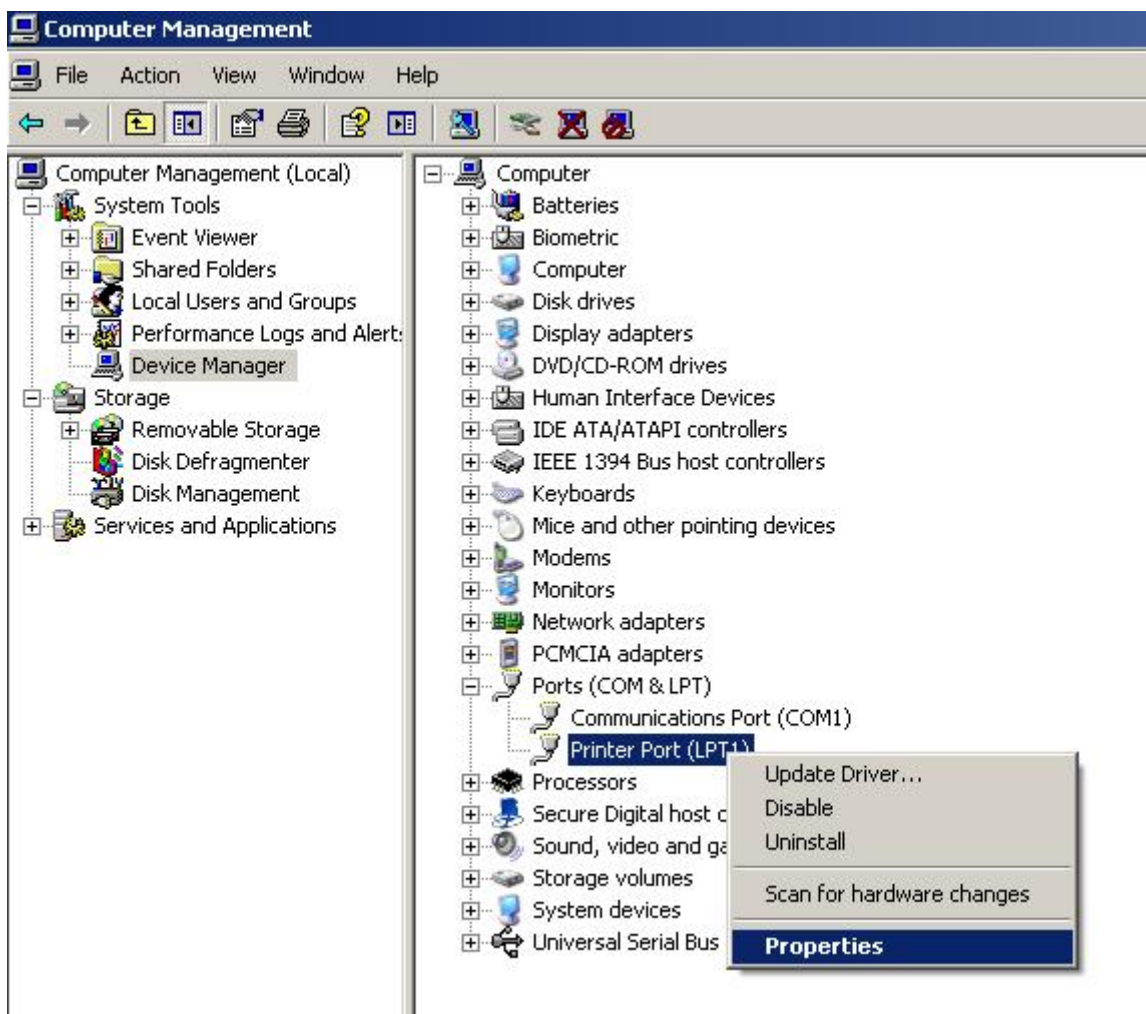
Third party LPT ports use a service that can differ depending on the make and model of the LPT port card. The Meta Imaging Series® software depends on knowing the name of this service for the LPT port to function in the software. If you have a computer that doesn't have a parallel port built into the motherboard, you will have to use this process to get parallel ports to work. These steps should be done after the Meta Imaging Series® software is installed on the computer.

Service Confirmation

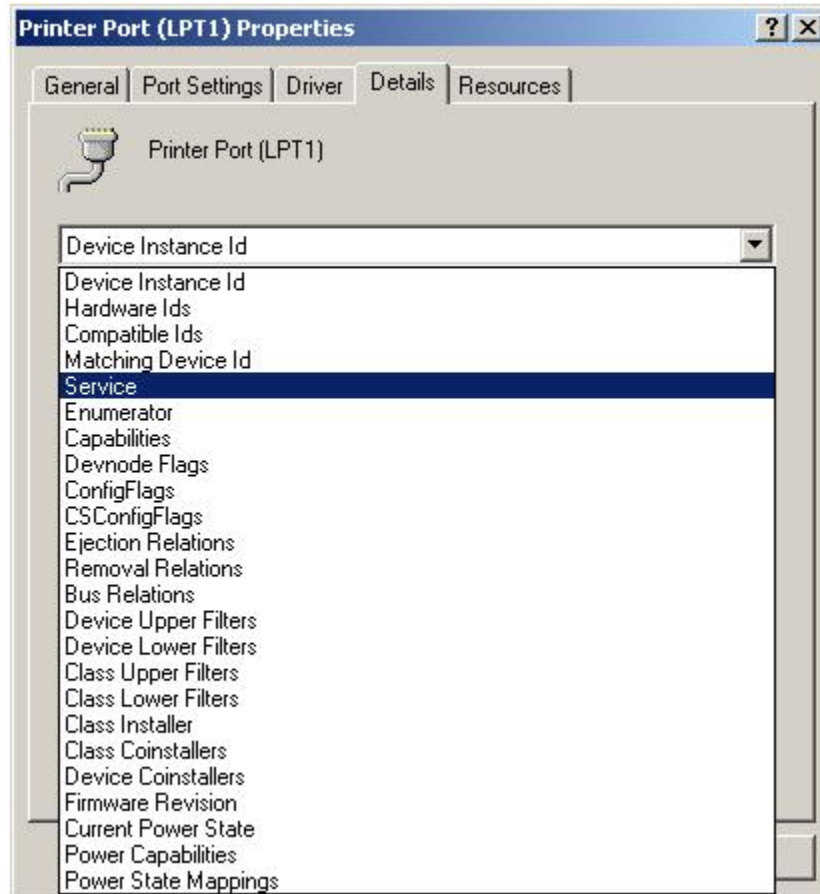
1. Confirm the service name the LPT port is dependent on; open Device Manager:



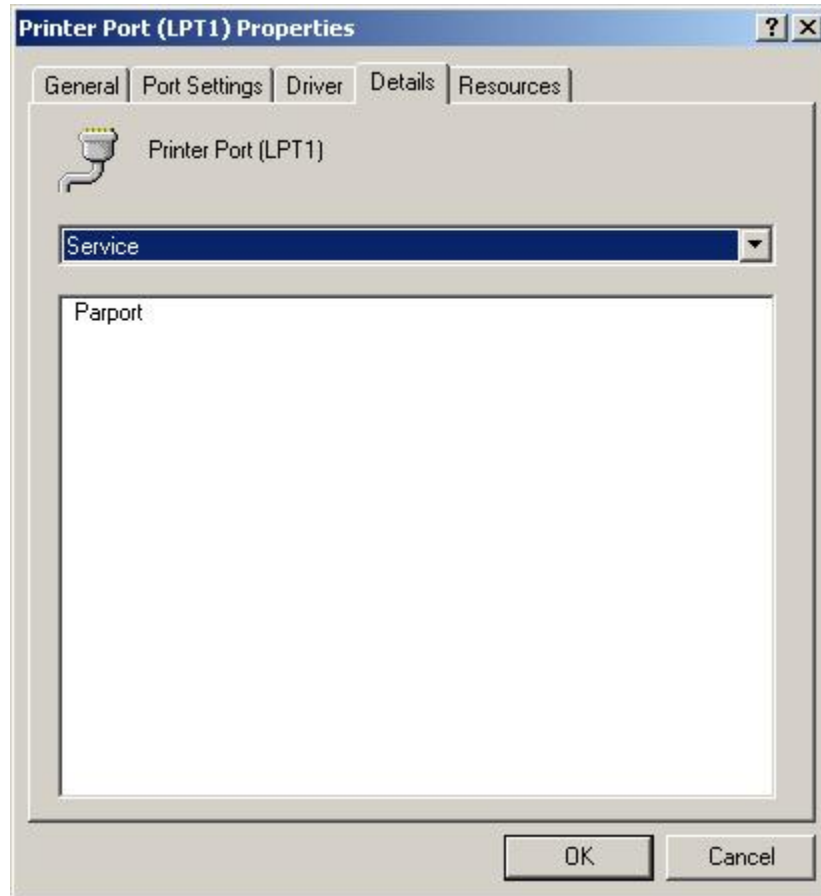
2. Highlight the port you want to use for device control and right-click on it to bring up the context sensitive menu. Select **Properties**.



3. The LPT port properties screen will come up. Select the Details tab on the properties window to bring up a drop-down list of subjects that have detailed information available for them. Click on the drop-down and select Service, as shown below:



- Once the Service has been selected, you should see the drop-down list collapse and the detailed value come up, as shown below:



In this example, the Service that this LPT port depends on is called *Paraport*. Write down the service name that is displayed for your port for use in the steps below.

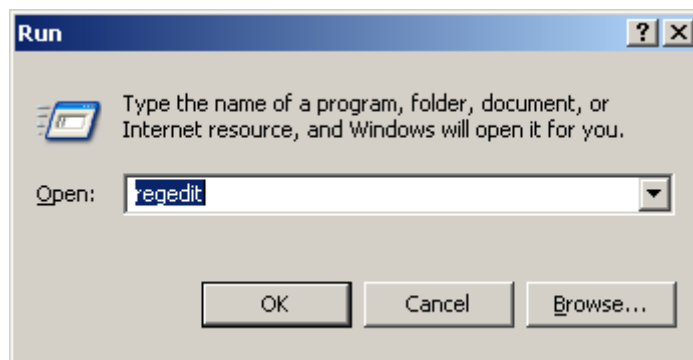
Registry Changes

Warning: Serious problems – including rendering your system inoperable – might occur if you modify the registry incorrectly by using Registry Editor or by using another method. These problems might require that you re-install the operating system. The Registry should be backed up before any changes are made. Modify the registry at your own risk. MDS Analytical Technologies cannot guarantee that these problems can be solved from any incorrect Registry editing.

For further information about the Registry, see the following Microsoft Knowledge Base article:
<http://support.microsoft.com/kb/256986>

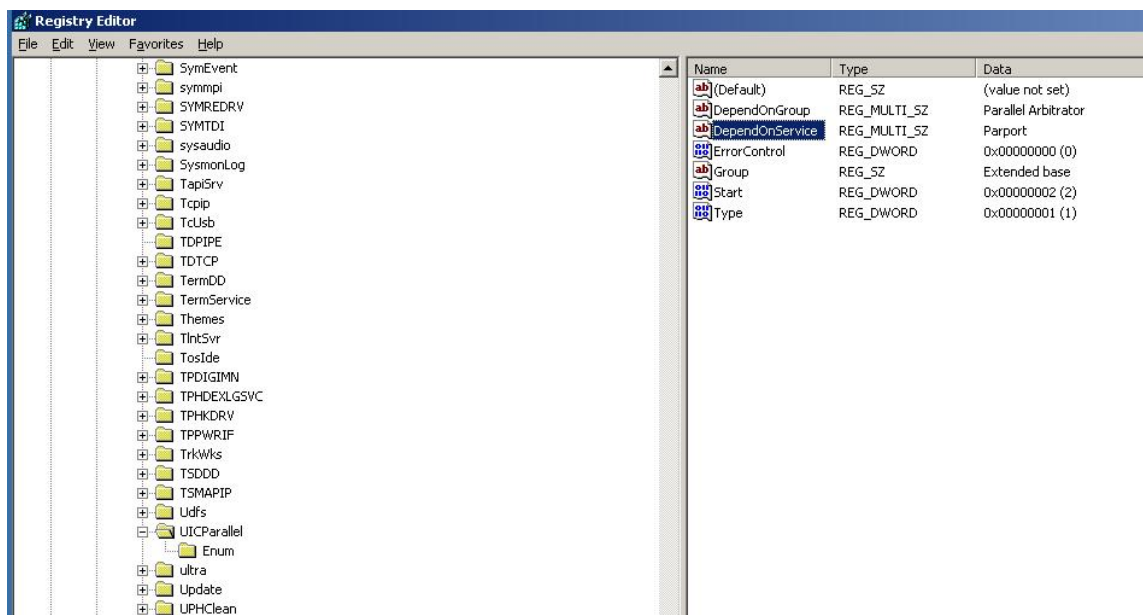
Once the Service name is determined, a single entry must be changed in the system registry.

In order to access the Registry Editor, click on Start -> Run to bring up the Run dialog. Enter **regedit** in the dialog and click OK, as shown below:



That will start the Registry Editor. Scroll down to the following folder:

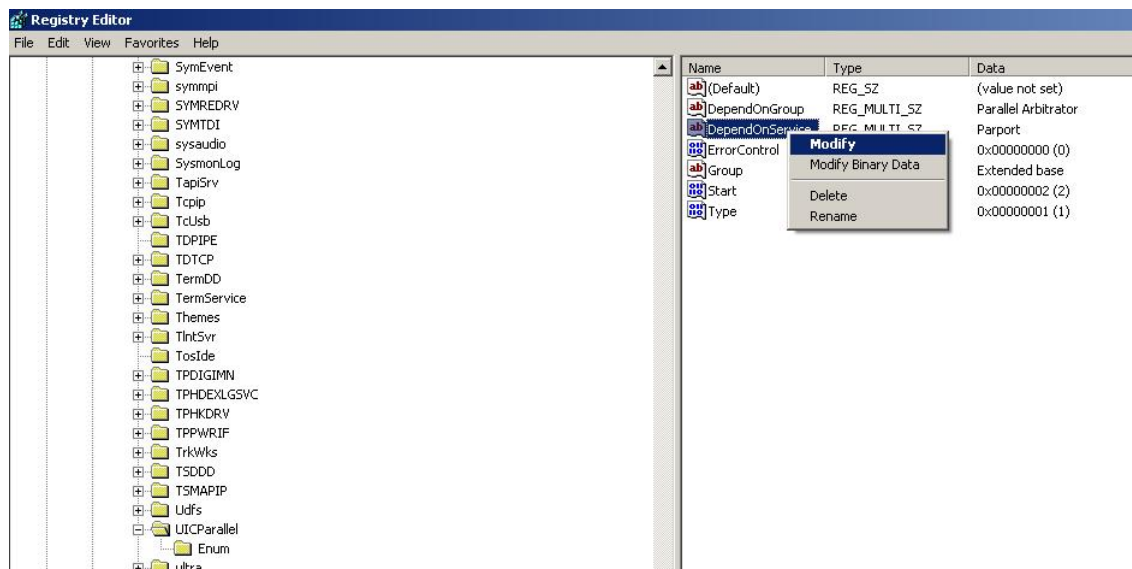
HKEY_LOCAL_MACHINE\SYSTEM\CurrentControlSet\Services\UICParallel



Note the current value that is in the DependOnService key. That is the service that the Meta Imaging Series[®] software is using to control the LPT port.

If the value is the same as the value you wrote down in step 4 above, close the Registry Editor and contact Technical Support for further assistance.

If the value is different from the value you wrote down in step 4 above, you will need to change the DependOnService key to match. Right click on the DependOnService key and select **Modify**, as shown below:



That will bring up the Edit screen for the `DependOnService` key. Type in the value you wrote down in step 4 above into the Value Data box, as shown below:



Click `OK` when you finish entering the data. The value for `DependOnService` should now match the value you wrote down in step 4 above.

Exit the Registry Editor and re-boot your PC.

Once complete, open the Meta Imaging Series[®] Administrator and configure any hardware or LPT ports as necessary.

For further assistance please contact Meta Imaging Series® technical support at 800-635-5577 option 3-2-2 or email support.dtn@moldev.com.