

Using the Drop-ins/Toolbars in Meta Imaging Series® Administrator

Overview

- Meta Administrator application is located in the Meta Imaging Series® folder on your desktop
- For detailed instructions on using Meta Administrator specific functions see articles #T20091 and T20092
- All Meta Administrator tasks must be completed before attempting to configure devices within MetaMorph® software

ARTICLE #
T20103

PRODUCTS
MetaMorph®
MetaFluor®
MetaVue®

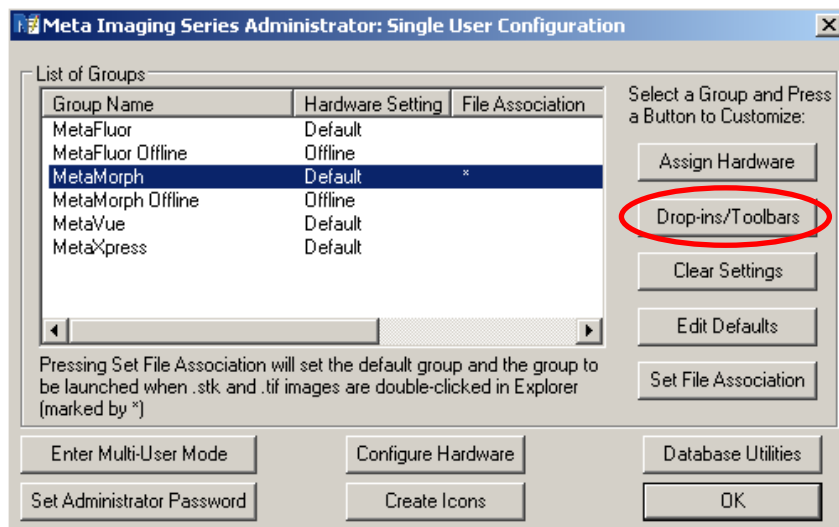
CREATED
27-Jan-09

LAST UPDATED
27-Jan-09

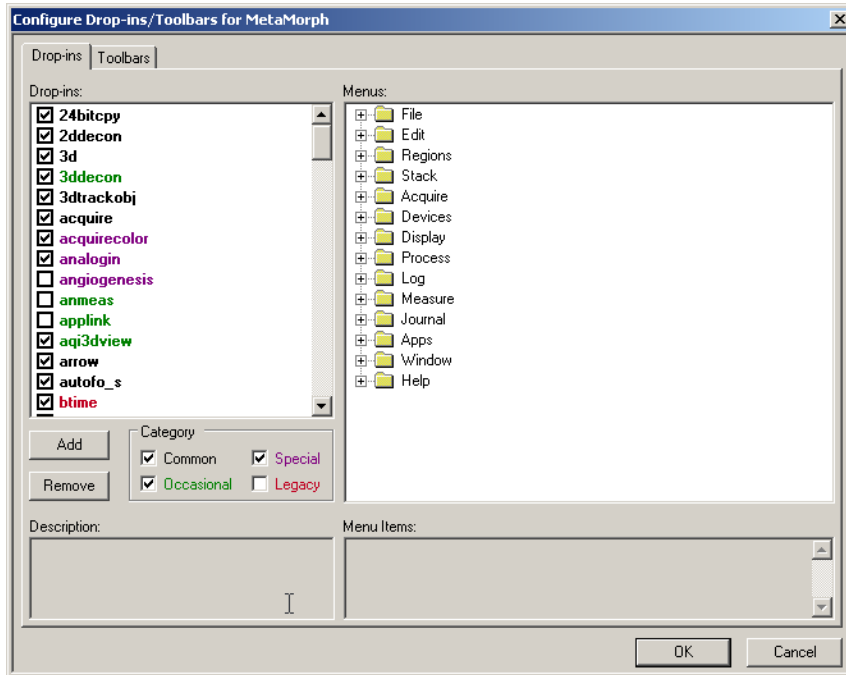
Meta Series Administrator Instructions



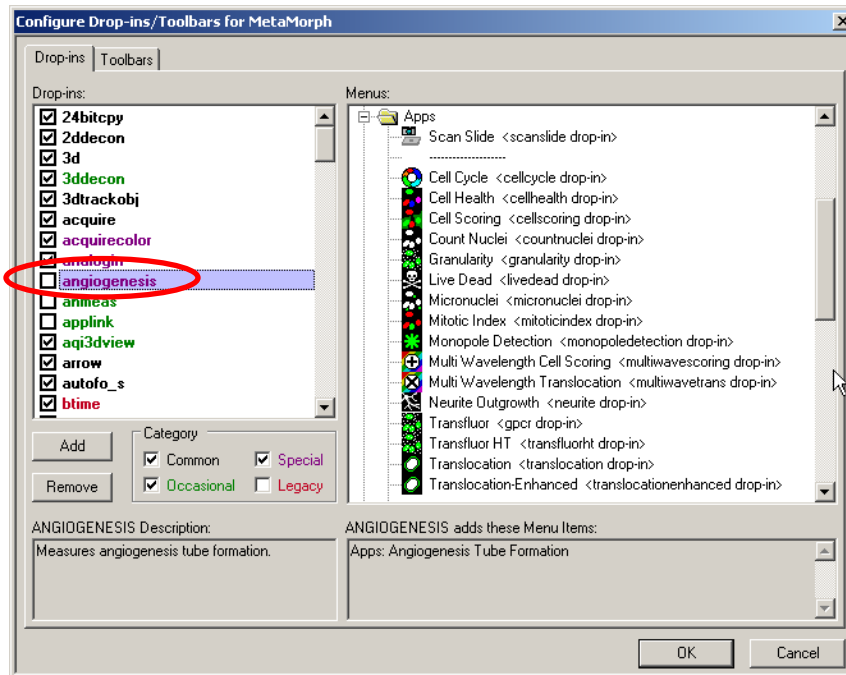
1. Open the Meta Imaging Series Administrator.

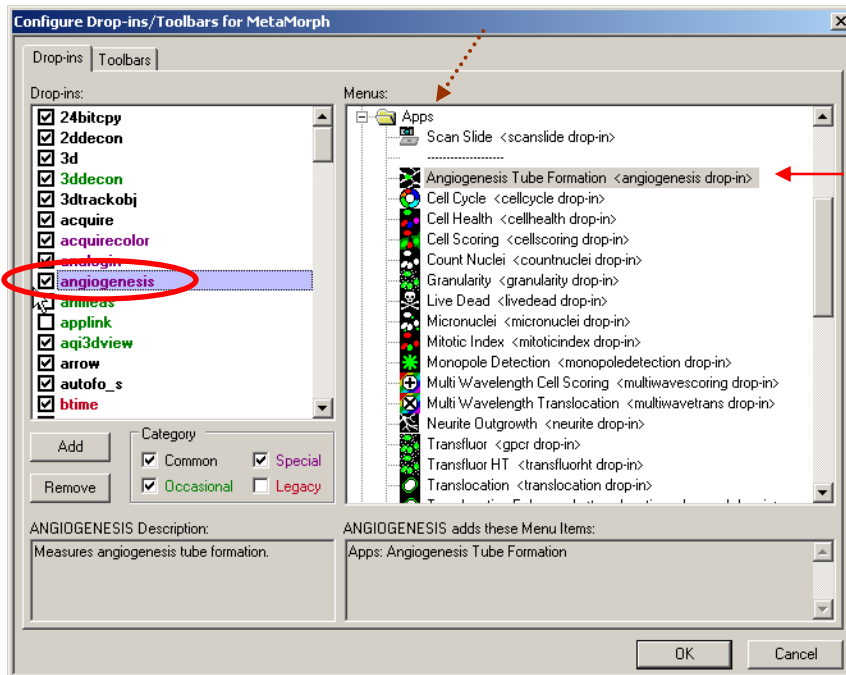


2. Click Drop-ins/Toolbars button.

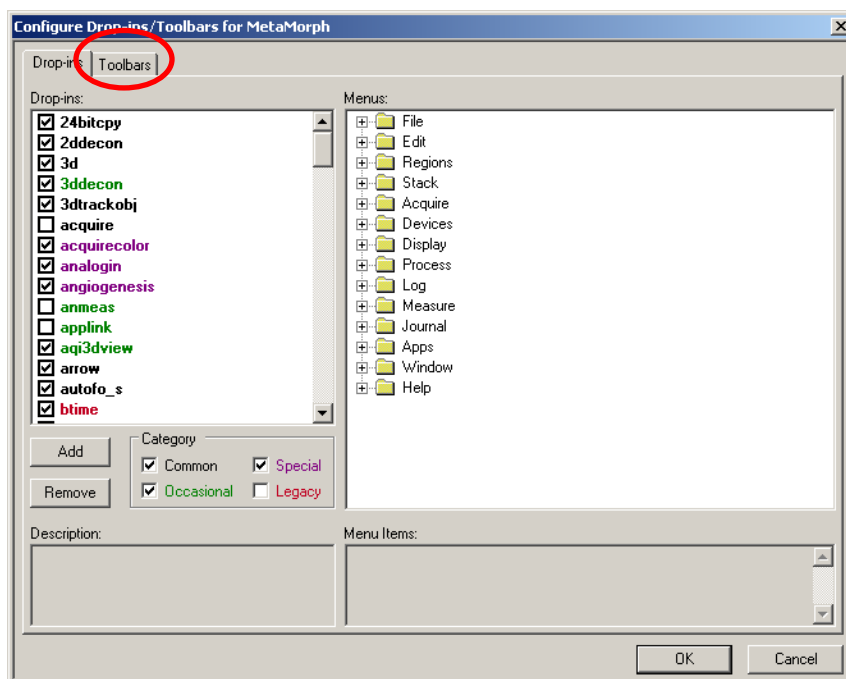


3. Choose a Drop-in to add to your menu.



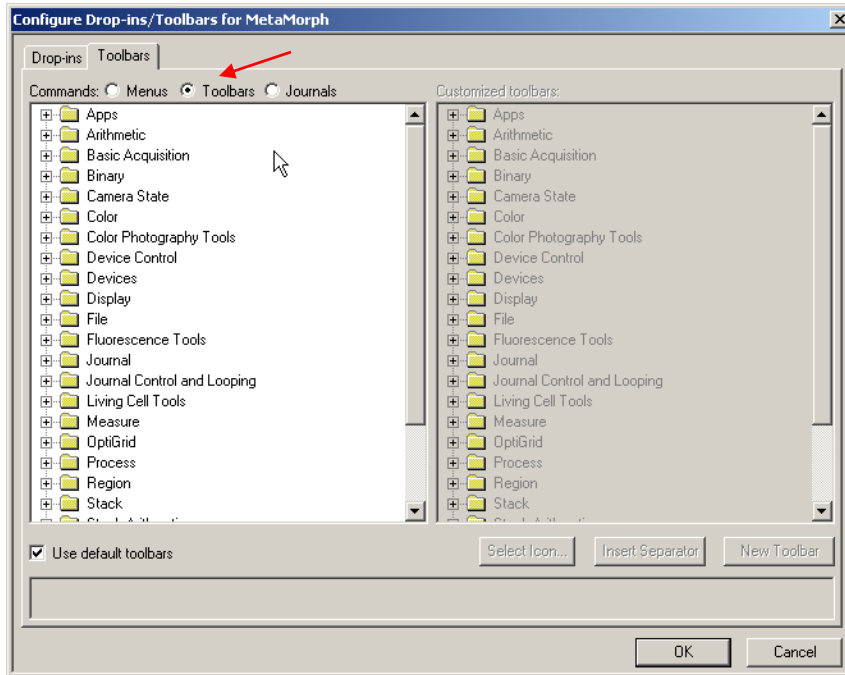


4. The menu items associated with the drop in will be highlighted in the menu folder where they will appear.
 → NOTE: Please note which menu your drop-in is placed into so that you can find it in the MetaMorph application.
5. Click OK.
6. Click on the Toolbar tab.

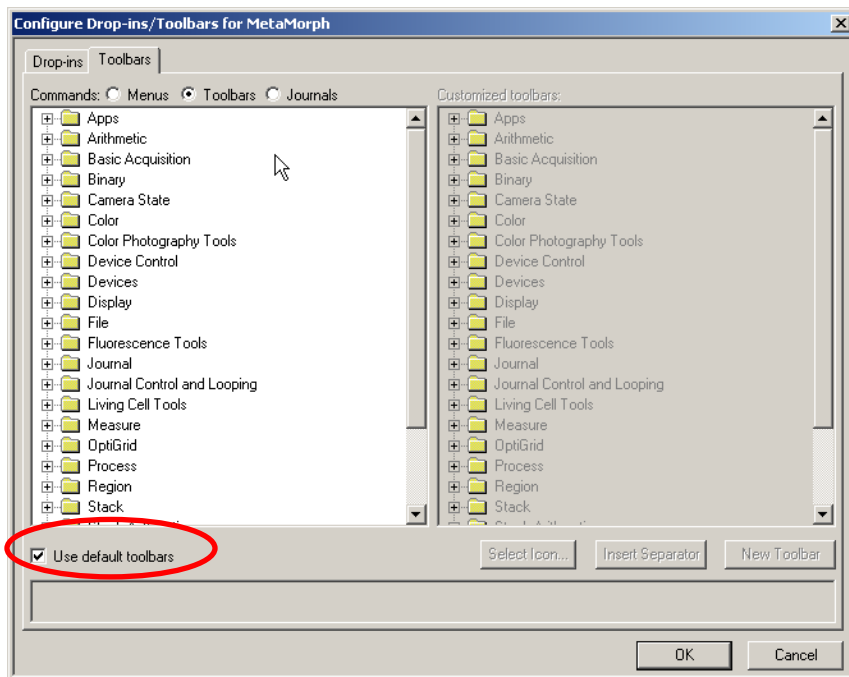


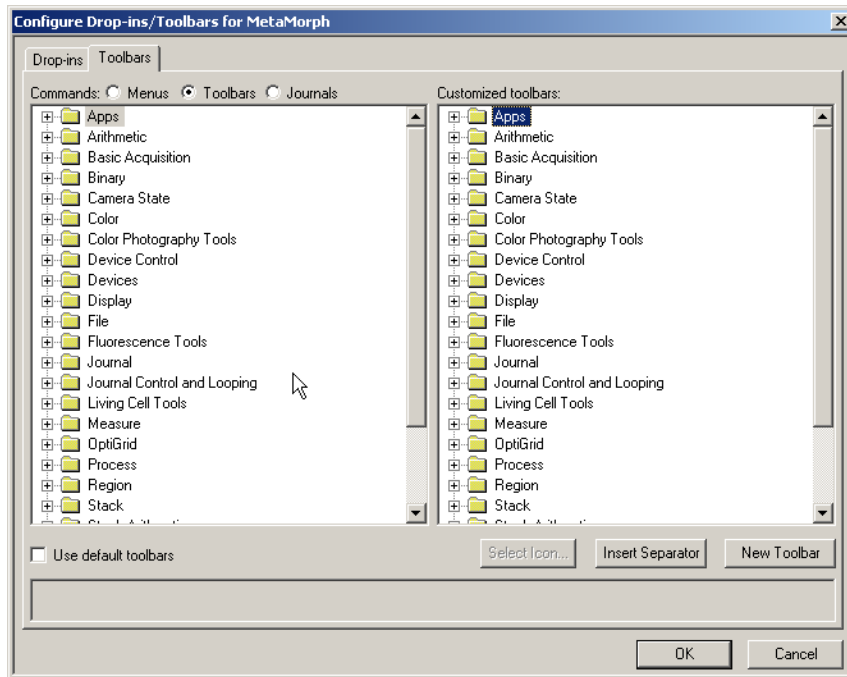
FOR RESEARCH USE ONLY. NOT FOR USE IN DIAGNOSTIC PROCEDURES.

MOLECULAR DEVICES, the Molecular Devices logo, METAMORPH, META IMAGING SERIES, METAFUOR and the MetaMorph logo are trademarks of Molecular Devices, Inc. ©2010 Molecular Devices, Inc. Printed in the U.S.

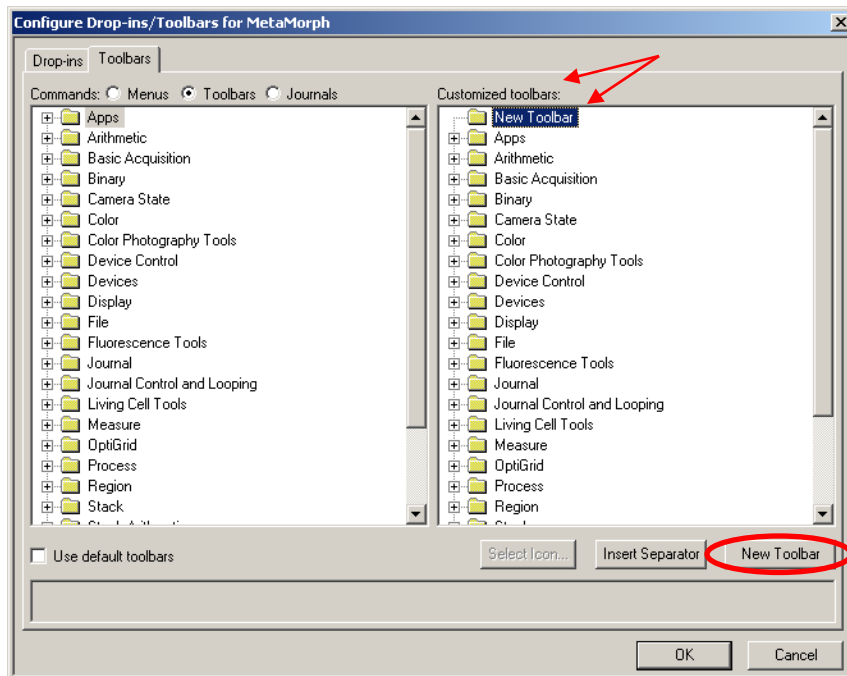


7. Click on the Toolbar radio button.
8. You can add your own custom toolbar to the MetaMorph® program by unchecking the “Use default toolbars” at the bottom of the dialog box.



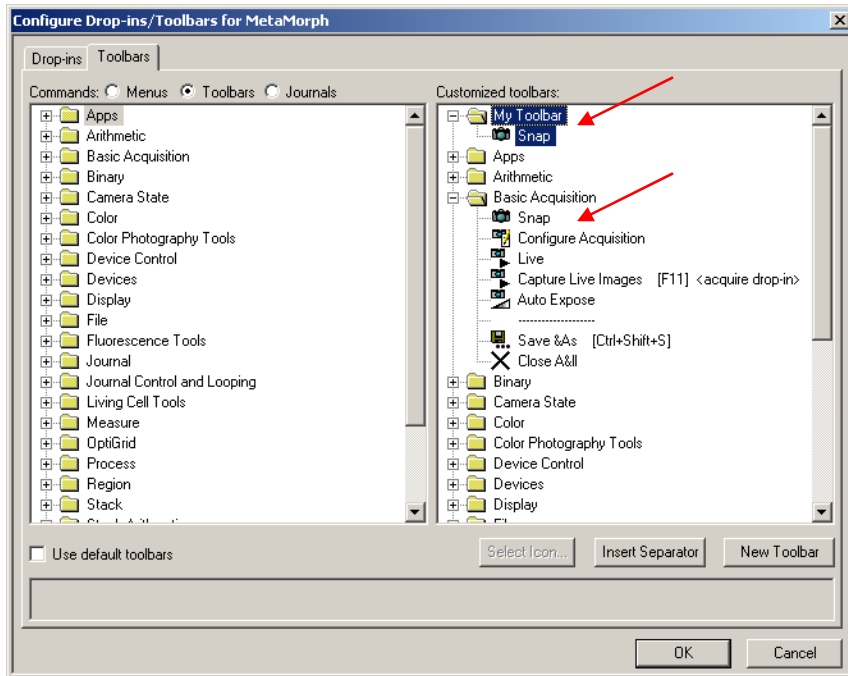


9. Click on the New Toolbar button and a folder labeled New Toolbar appears in the Customized Toolbars screen.



10. To rename the toolbar, right click on the name and choose "Rename".

11. To add items to the toolbar from existing toolbars, right click on the item you want to copy, click copy. Paste over the new folder. The item will be in the new toolbar.

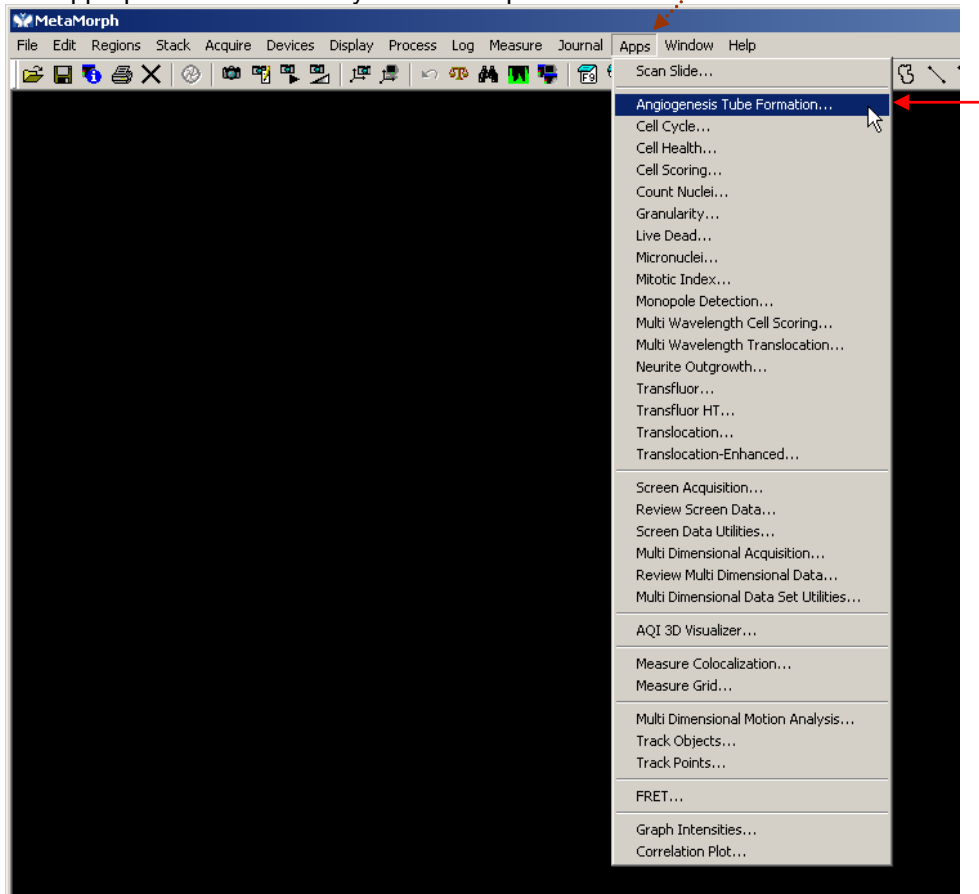


12. Click OK.

MetaMorph® Instructions



1. Open the MetaMorph® program.
2. Click on the appropriate menu to see your new drop-in.



FOR RESEARCH USE ONLY. NOT FOR USE IN DIAGNOSTIC PROCEDURES.

7

MOLECULAR DEVICES, the Molecular Devices logo, METAMORPH, META IMAGING SERIES, METAFUOR and the MetaMorph logo are trademarks of Molecular Devices, Inc. ©2010 Molecular Devices, Inc. Printed in the U.S.

3. Right click in toolbar space. Choose your new toolbar and it will appear in the toolbar space.

