

## Capturing Debug Output for Supported Devices

### Overview

- Download the Debug Viewer software
- Configure the Debug Viewer software
- Configure the hardware for Debug Output
- Capture and save the Debug Output

### Download the Debug Viewer software

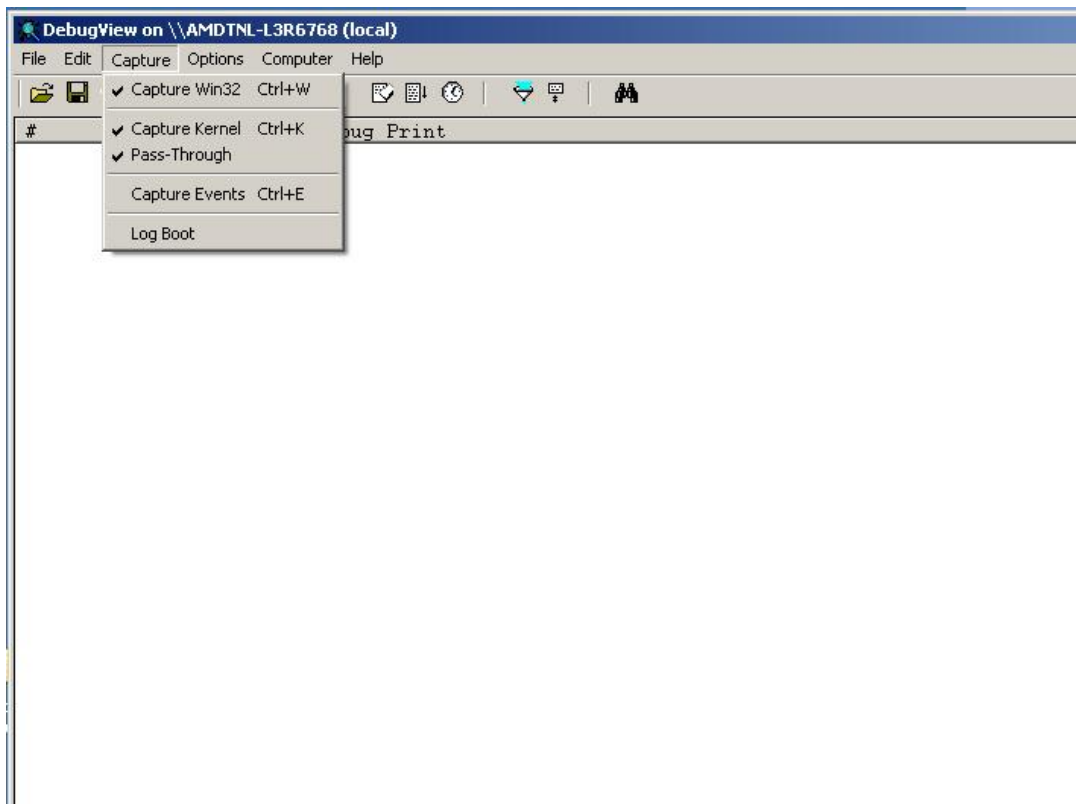
1. The Debug Viewer software is available for download from the following link:

<http://technet.microsoft.com/en-us/sysinternals/bb896647.aspx>

2. Copy the contents of the folder into a new folder called "Debug Viewer" on the PC that is connected to the hardware being investigated.

### Configure the Debug Viewer software

1. Open the Debug Viewer folder and double click on the DBGVIEW.EXE to launch the DebugView program on the local computer.
2. Select the Capture menu and make sure the following options are selected:



ARTICLE #  
T20100

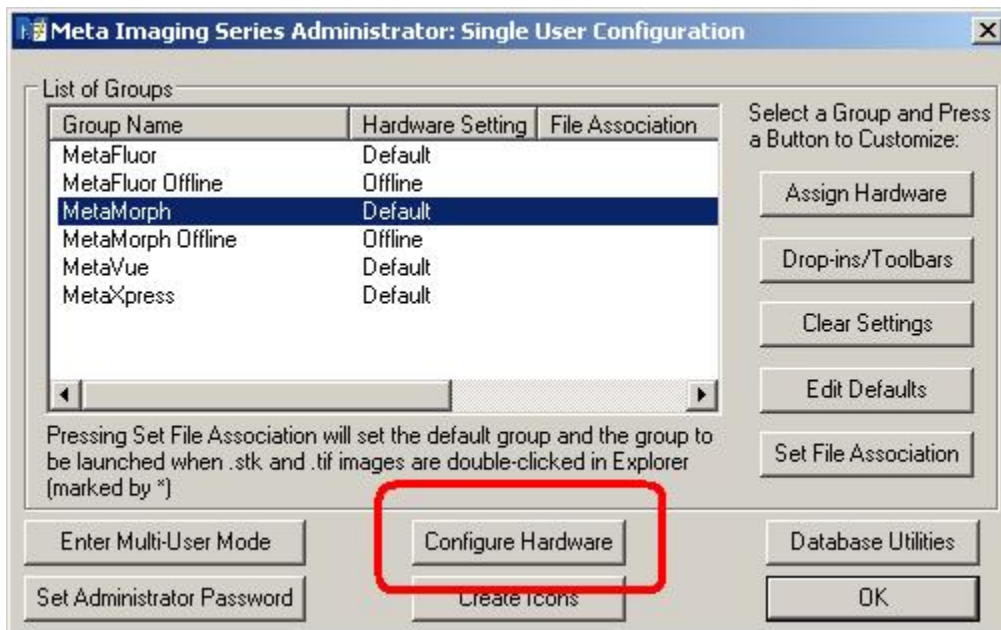
PRODUCTS  
MetaMorph®  
MetaFluor®  
MetaVue®

CREATED  
19-November-2008

LAST UPDATED  
20-November-2008

## Configure the hardware for Debug Output

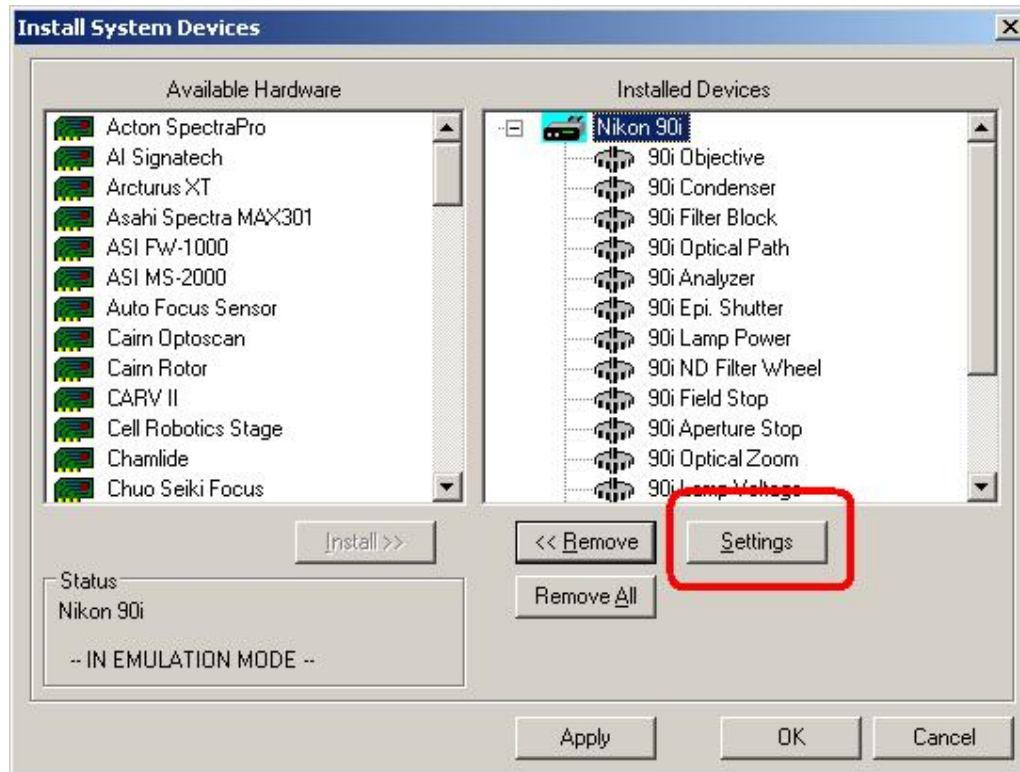
1. Open the Meta Imaging Series® Administrator and select Install Configure Hardware



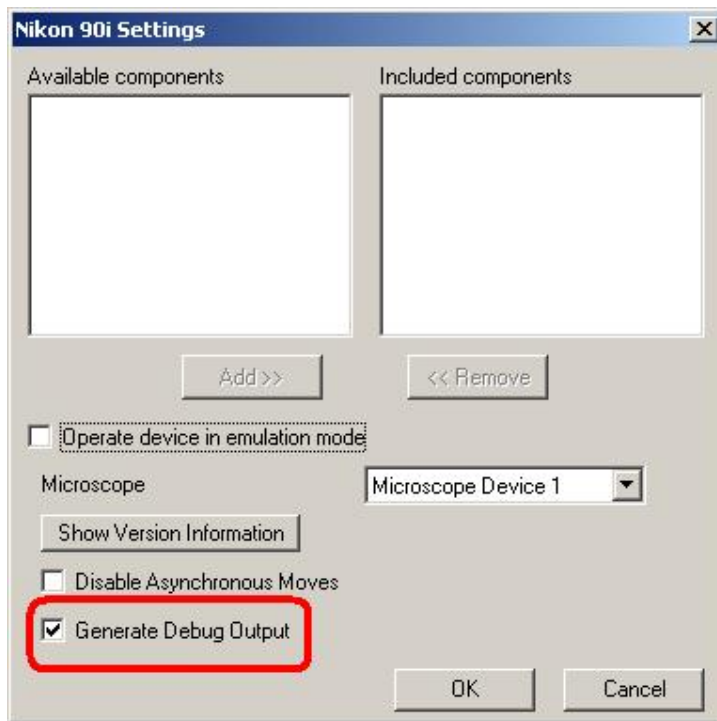
2. Select Install System Devices



3. Highlight the piece of hardware you wish to capture output for and click on the Settings button



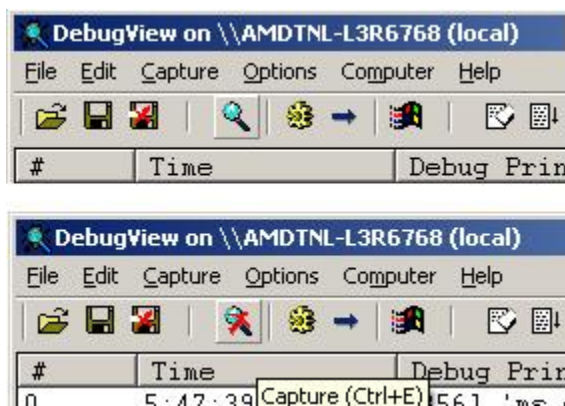
4. In the hardware settings there should be a checkbox for Generating Debug Output. Select the checkbox to enable the output.



5. Click OK on each of the screens to exit the Administrator.

### Capture and save the Debug Output

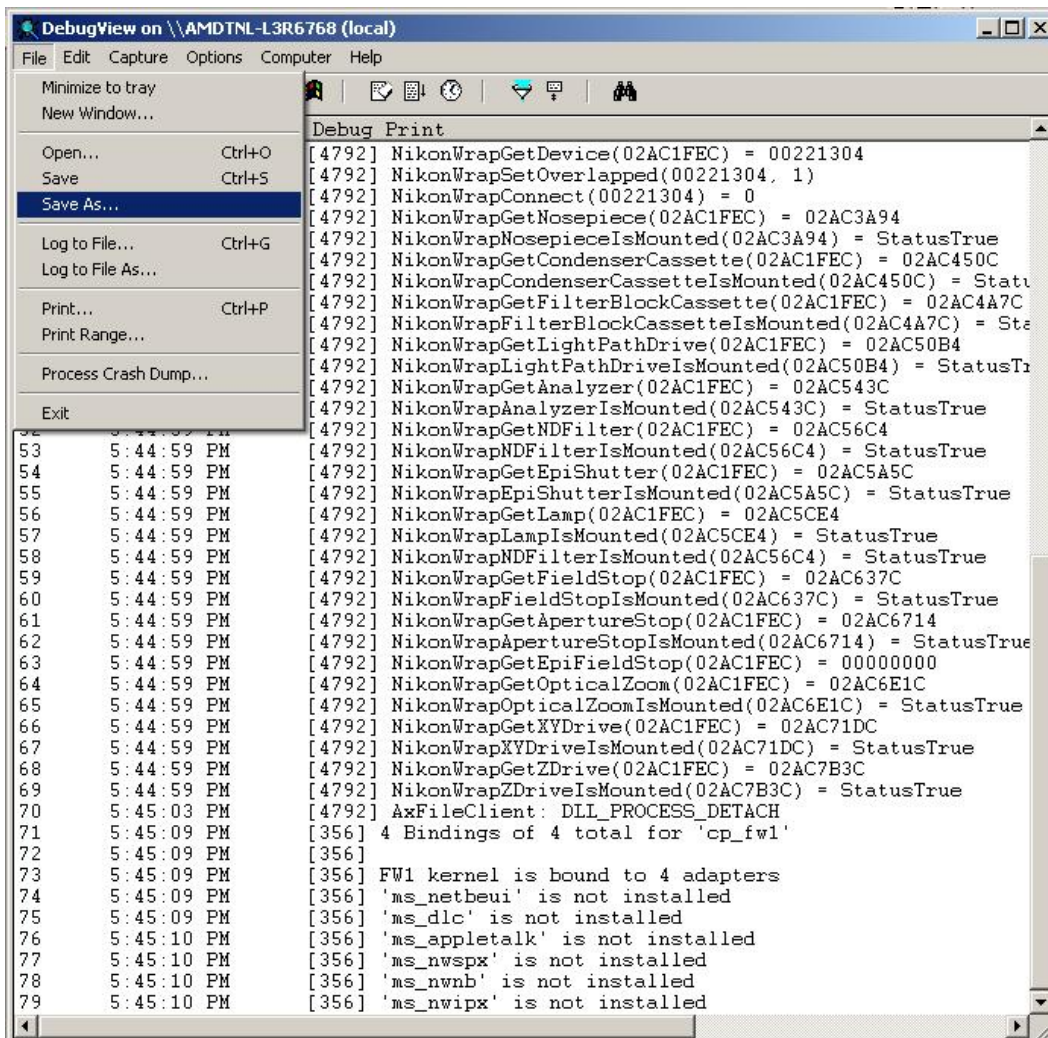
1. Once the hardware is configured you can begin capturing data. The DebugView program allows the user to start and stop the data capture with the touch of a button. The top picture is capture mode ON – the magnifying glass does not have anything over it and the program will capture data.



The bottom picture is capture mode OFF – there is a red “X” over the magnifying glass and the program will not capture data. Make sure capture mode is ON before attempting to collect data.

2. Once the DebugView program is capturing data open the MetaMorph® program and begin using the hardware as normal. You should see the DebugView screen update as more data is captured.

- As soon as you are done capturing data, such as the error message or behavior in question, save the output data into a log file, as shown below.



- Save the data to a .LOG file. Once it is saved it can be sent out for analysis.