

## Olympus Hardware Installation

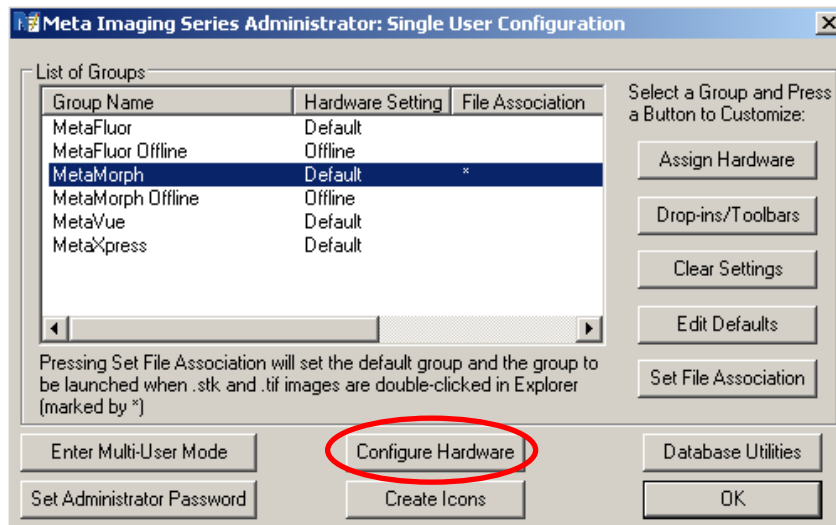
### Overview

- Meta Administrator application is located in the Meta Imaging Series folder on your desktop.
- For detailed instructions on using Meta Administrator specific functions see articles #T20091 and T20092.
- All Meta Administrator tasks must be completed before attempting to configure devices within MetaMorph.
- Please install all Olympus drivers as per instructions from Olympus.

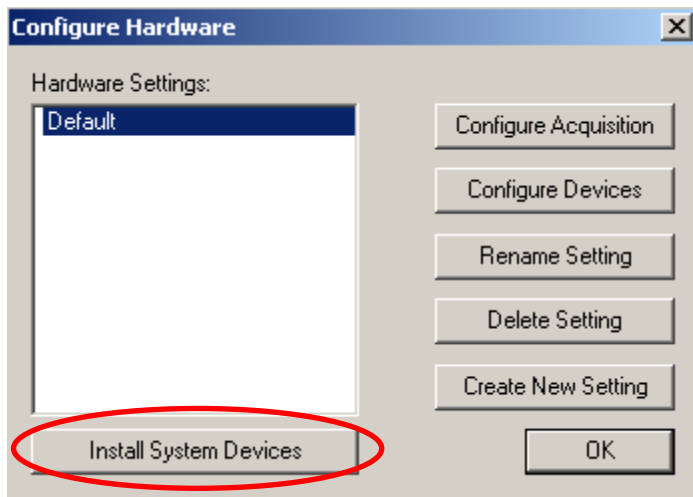
## Meta Series Administrator Instructions



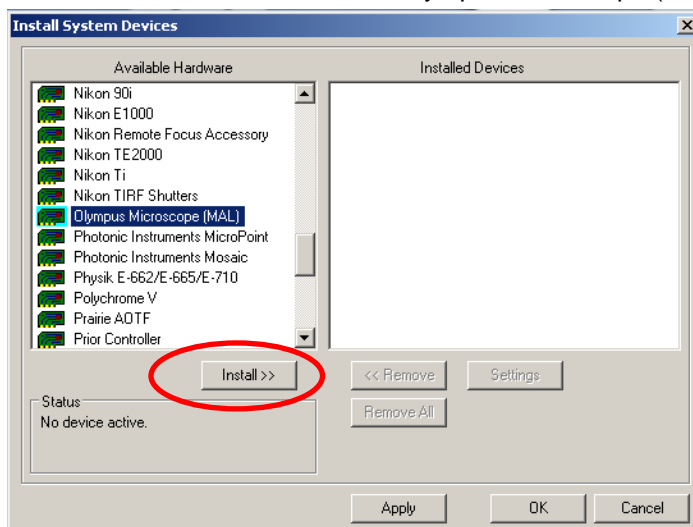
1. Open the Meta Imaging Series Administrator.

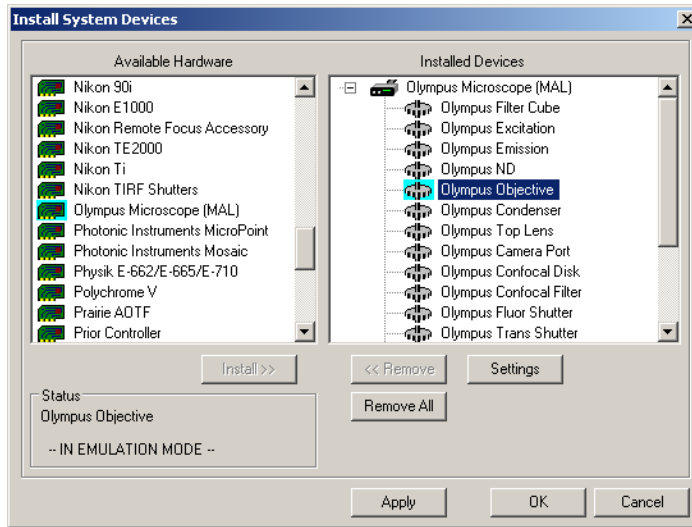


2. Click Configure Hardware.

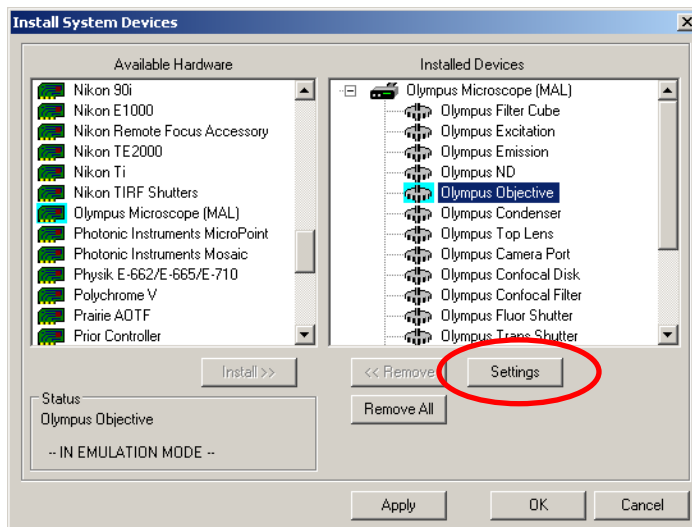


3. Click on Install System Devices.
4. Within the list of devices, choose the Olympus Microscope (MAL) to be installed and click Install.

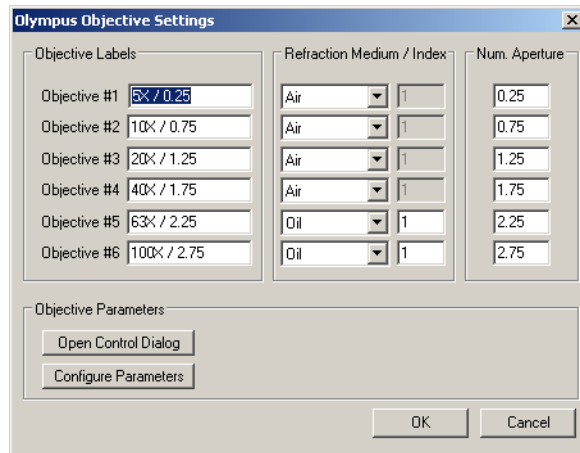




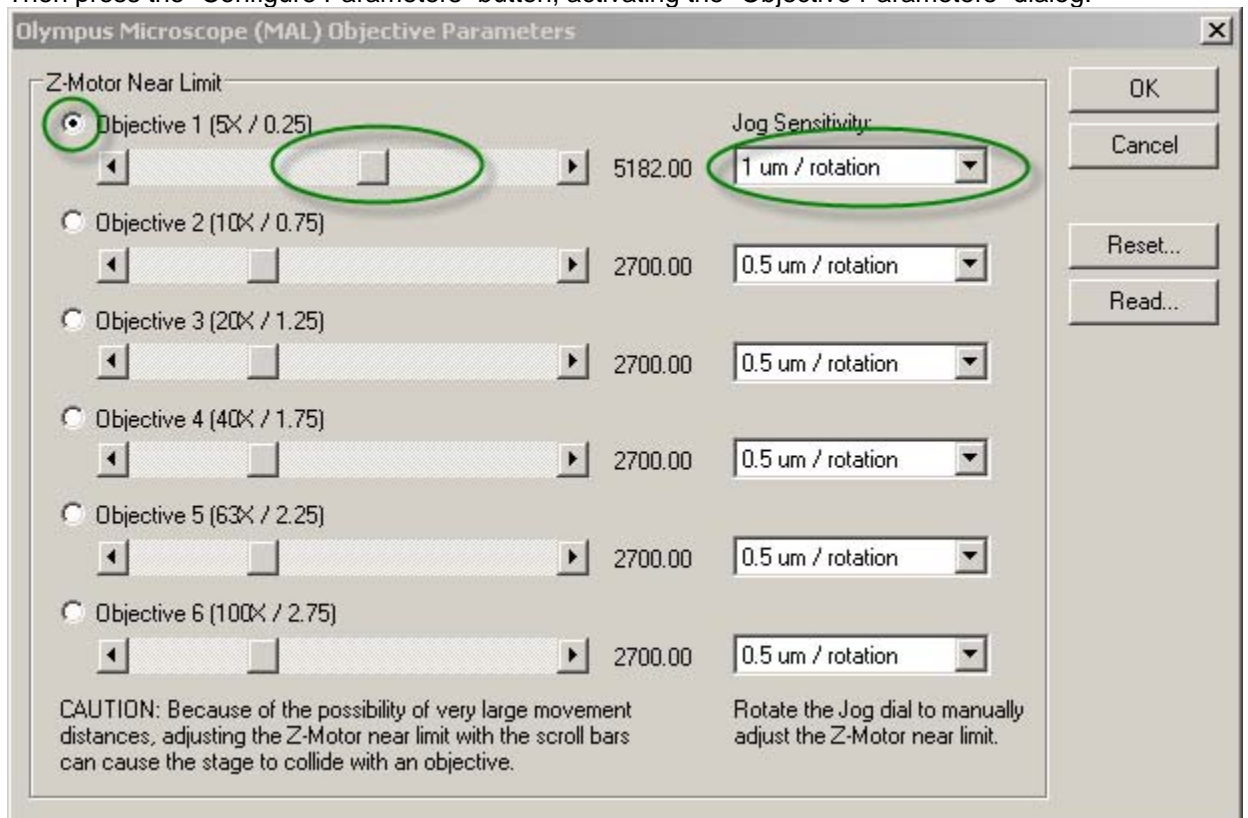
5. Choose each item within the installed device and click on Settings.



6. When a window opens, adjust appropriately for each item.

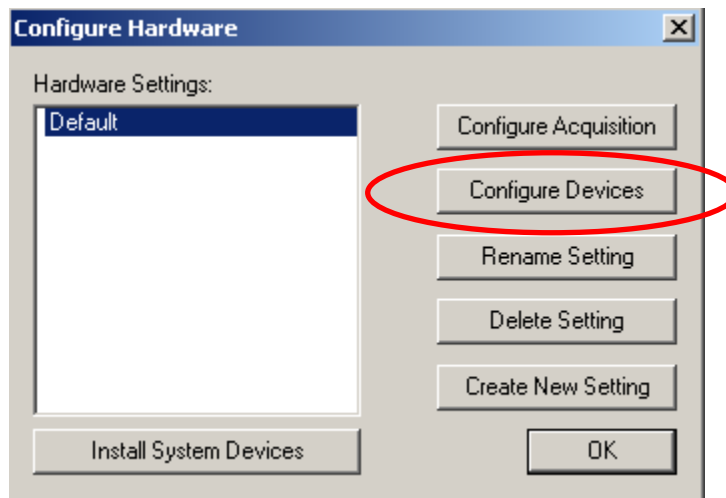


- Click OK when completed.
- It is imperative that you configure the “Z-Motor Near Limits” for each objective.** If you do not set these values, you will not be able to bring your specimen into focus due to limited z-position travel. Click the “Settings” button for the “Olympus Objective” component (see step 5). Then press the “Configure Parameters” button, activating the “Objective Parameters” dialog.

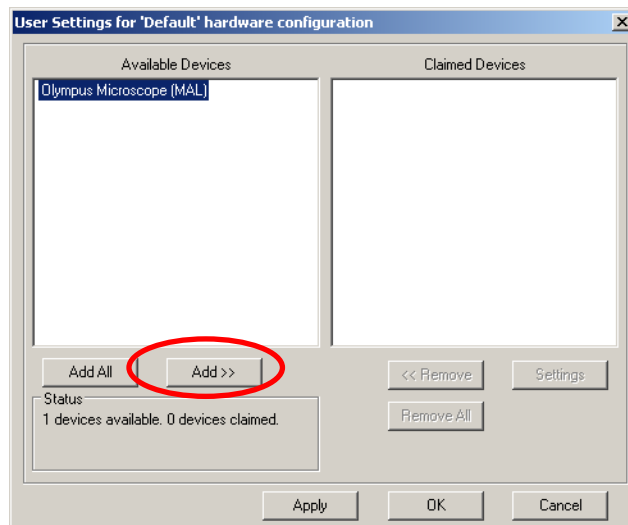


- Activate an objective by checking the radio button; then position the objective as close as possible to a sample cover slip on the microscope using the associated slider. Focus knob sensitivity can be set for each objective by selecting the desired value from the associated drop down menu.

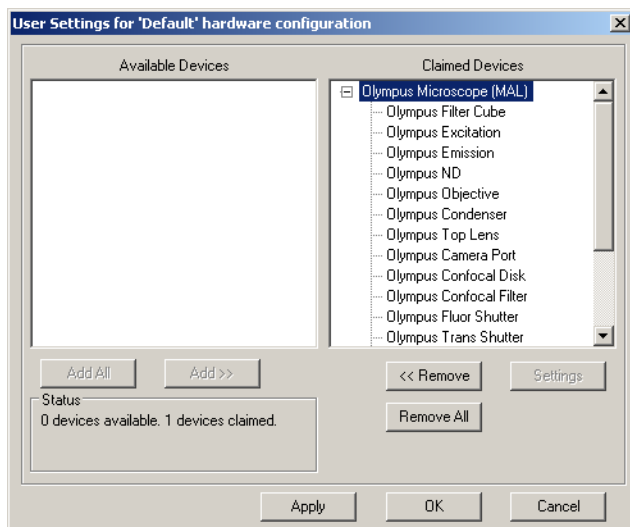
10. Once the configuration is complete. Close the “Install System Devices” dialog and click on “Configure Devices”.



11. Click on each item listed on the left hand side and click Add.



12. Each device will move to the right hand side of the window and is now “claimed” by MetaMorph.

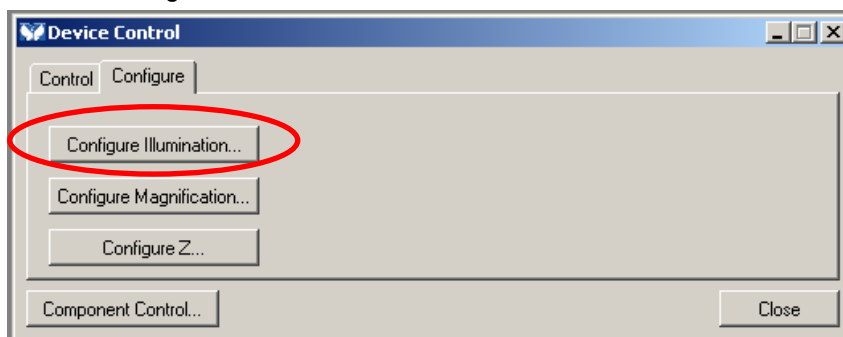


13. Click OK.

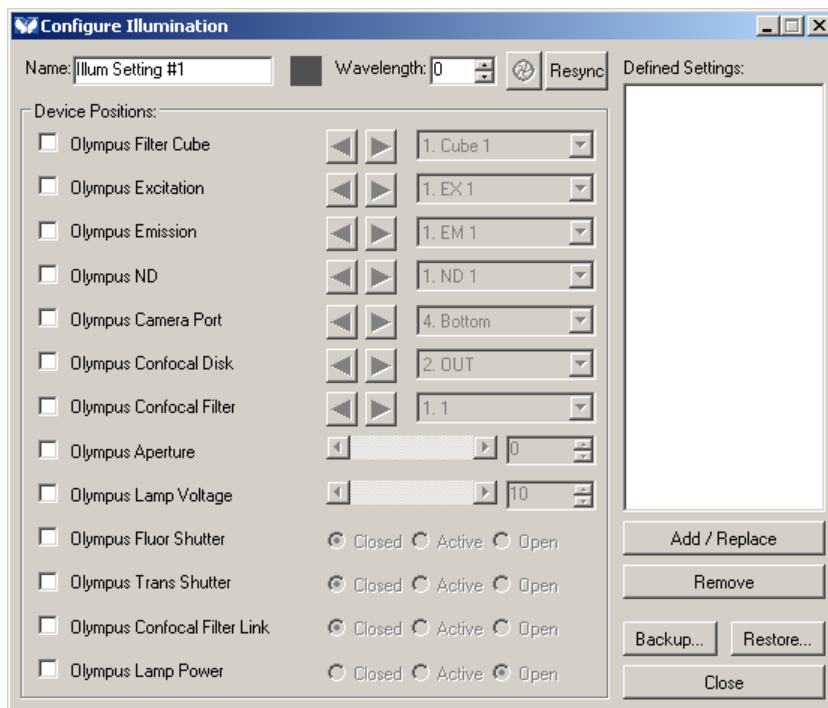
## MetaMorph Instructions



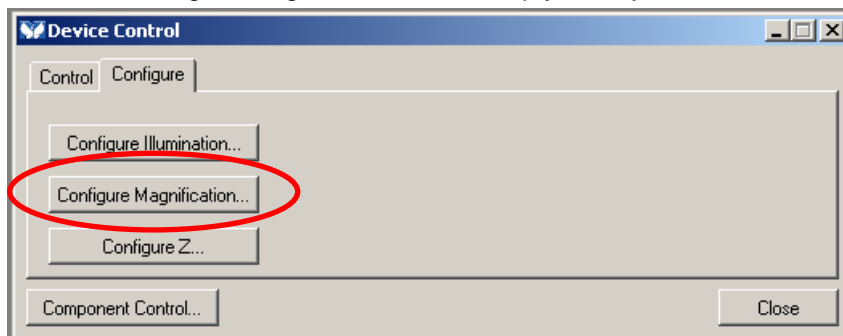
1. Open MetaMorph.
2. Click on Devices drop down menu.
3. Choose Device Control.
4. Choose the Configure tab

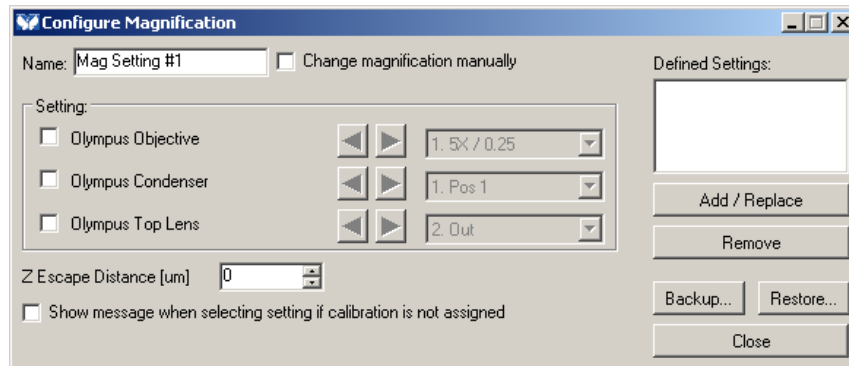


5. Click on Configure Illumination and name your illumination settings.

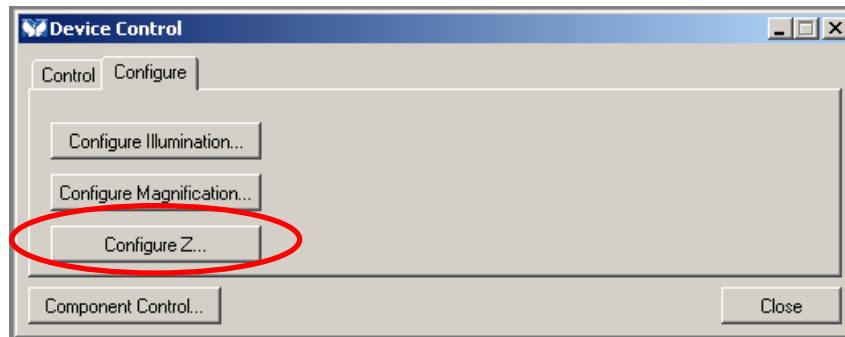


6. Next, click on Configure Magnification and set up your objectives.





7. Configure Z is used to control the Z position of your objectives or your stage...depends on how you've configured your devices!



8. Click on Close.