

MetaAdmin User Interface (UI) Description

Overview

- Meta Administrator application is located in the Meta Imaging Series folder on your desktop
- For detailed instructions on using Meta Administrator specific functions see articles #T20092 and T20098

Opening Interface

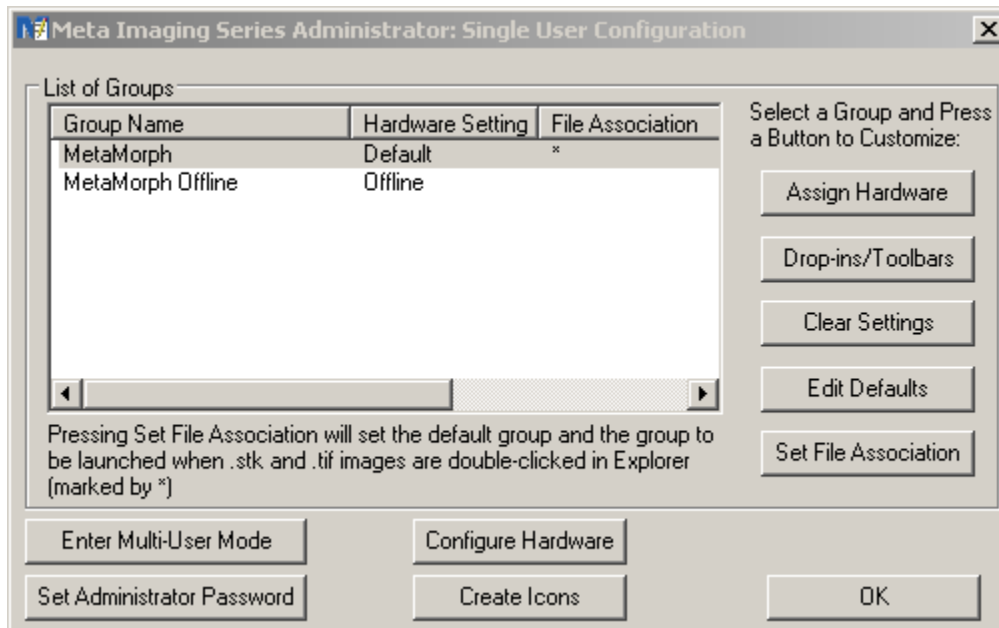
When opening the Meta Imaging Series Administrator you are presented with the following UI for configuring the MetaMorph application, build specific hardware configurations, and install and configure different hardware for image acquisition and system control.

ARTICLE #
T20091

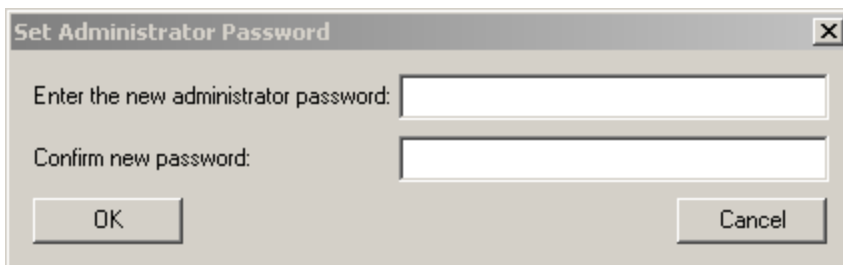
PRODUCTS
MetaMorph®
MetaFluor®
MetaVue®

CREATED
03-September-2008

LAST UPDATED
10-September-2008

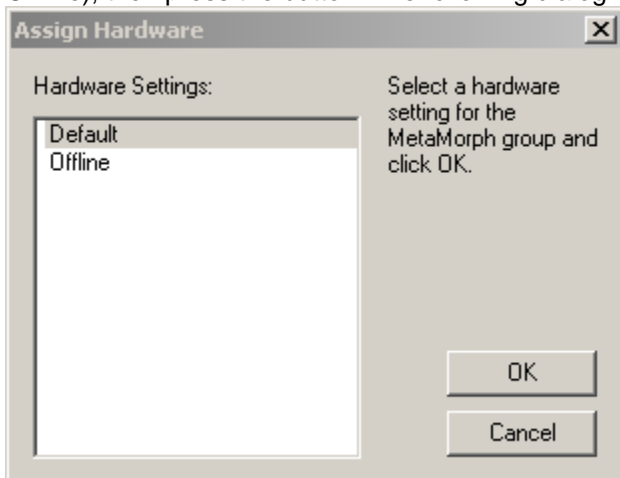


- List of Groups: Displays various saved user configurations. Each configuration can control a separate application or hardware setup. As an example, "MetaMorph Offline" is configured to run without any hardware configuration for use in offline analysis of images.
- Enter Multi-User Mode: When pressed, toggles the interface between single user and multi-user mode. The interface shown above is in single user mode. Multi-user mode allows for the same ability to create various hardware configurations and associate the configurations with different users. Multi-user mode is described in detail in document #T20093.
- Set Administrator Password: Allows you to set a simple administrator password for the configuration tool. Thus allowing only selected individuals to adjust the MetaMorph configurations. This is often a useful feature in core or multi-user facilities. The following dialog is presented:



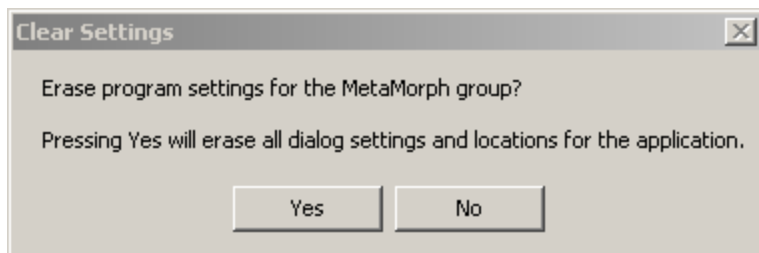
Enter the new password twice and press “OK” to close the dialog, save the password, and return to the main interface.

- **Configure Hardware:** Brings up a dialog that allows you to select and configure various cameras and devices. See below for detailed description of the interface components.
- **Create Icons:** Places a “shortcut” icon for each group listed in the “List of Groups” into the default MetaMorph application folder. The default folder is usually named “Meta Imaging Series [version]” and is usually found in the folder “C:\Documents and Settings\All Users\Start Menu\Programs”.
- **OK:** Accept and save changes, then close the application.
- **Assign Hardware:** Allows you to associate a particular saved hardware profile with a “Group Name”. Select the “Group Name” to associate with in the main interface dialog (ex.: MetaMorph Offline), then press the button. The following dialog is shown:



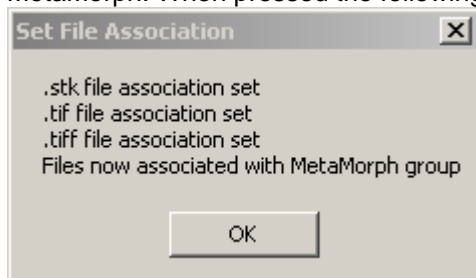
Highlight the “Hardware Setting” (ex.: offline) you want to associate with the selected “Group Name” and click “OK” to make the association or “Cancel” to close the dialog and return to the main interface without making any changes.

- **Drop-ins/Toolbars:** This dialog is used to customize the MetaMorph menus and toolbars. Its use is covered in detail in document T20098.
- **Clear Settings:** Clears all MetaMorph default settings such as saved window positions and last used dialog settings. No externally saved settings such as “Illumination Settings”, “Magnification Settings”, or “Acquisition Settings” are lost. The following dialog is displayed:



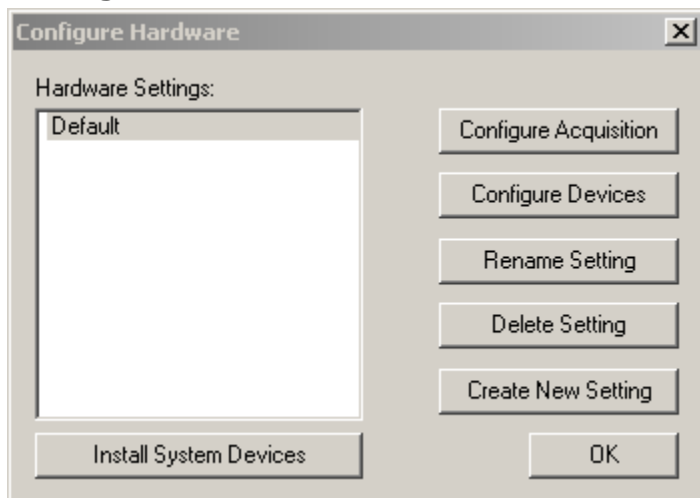
After selecting “Yes” or “No” you are returned to the main interface dialog.

- Edit Defaults: Brings up a dialog to edit the default file locations. See below for detail.
- Set File Associations: Associates the standard MetaMorph file types to open directly into MetaMorph. When pressed the following dialog is presented.



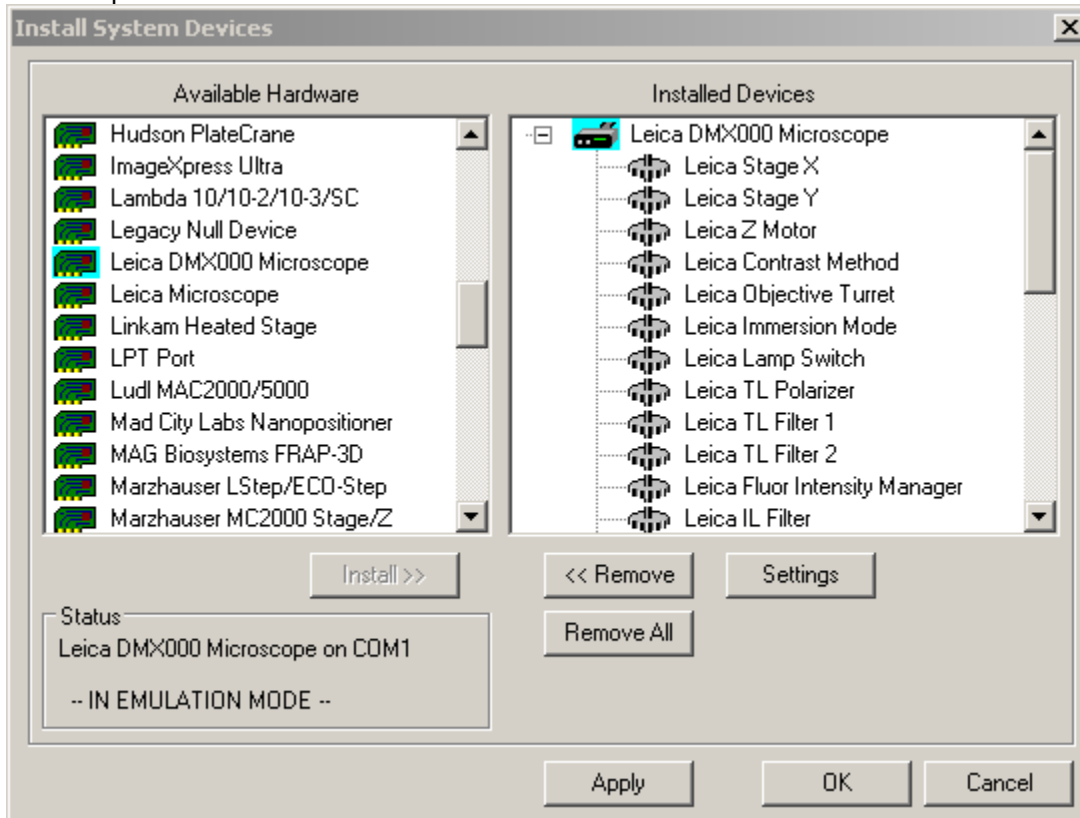
Press “OK” to continue.

Configure Hardware



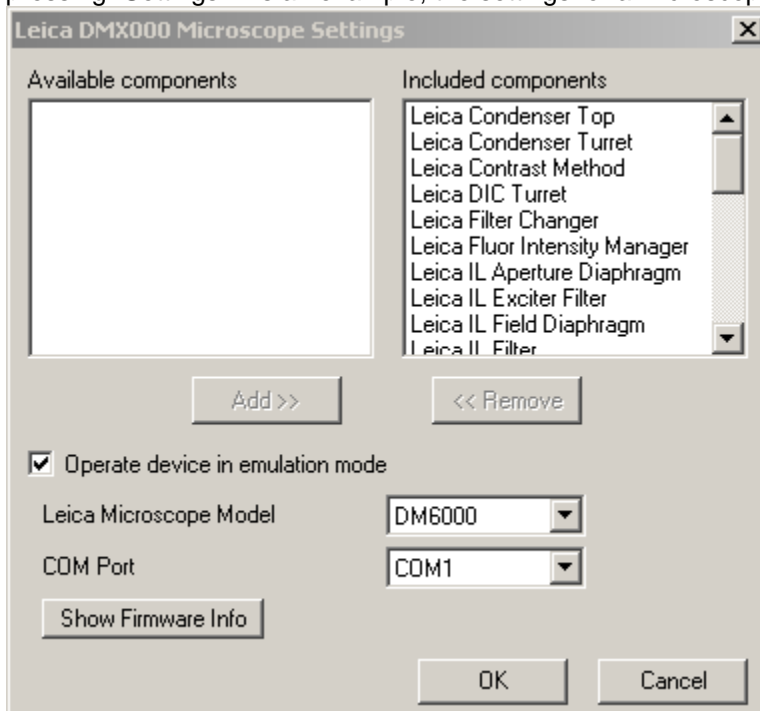
- Hardware Settings: List of all custom hardware settings available in this installation of MetaMorph.

- Install System Devices: Displays the following dialog used to setup and configure the system wide hardware installed on this particular installation of MetaMorph.



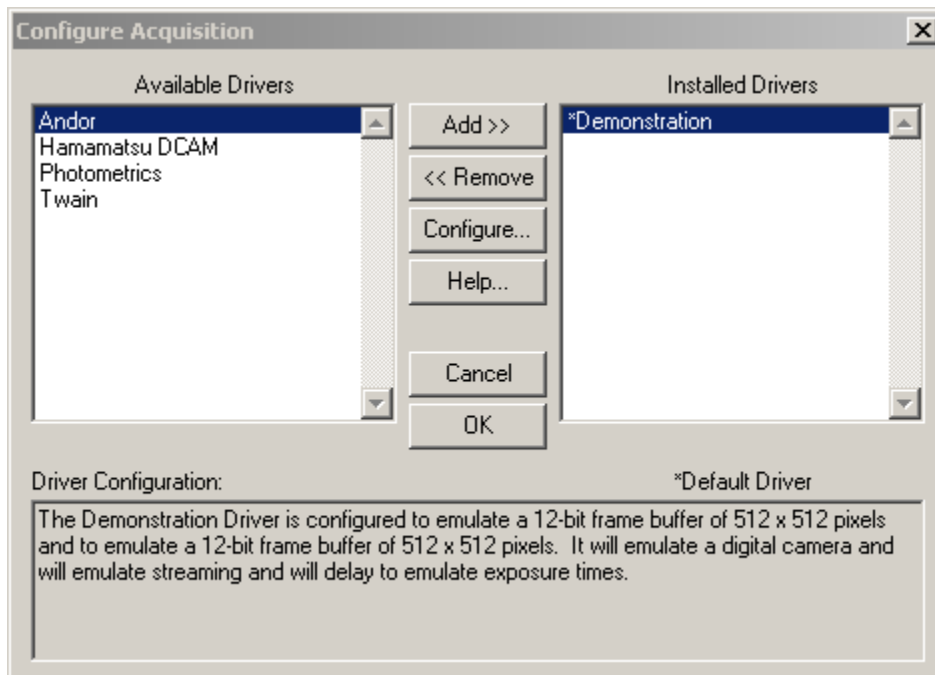
Items under “Available Hardware” can be added to the “Installed Devices” category by pressing the “Install” button. Likewise, they can be removed by using the “Remove” or “Remove All” button.

- Settings: Each component can be configured by highlighting it in the “Installed Device” pane and pressing “Settings”. As an example, the settings for a microscope appear as:



In this case, various sub components can be added and removed from the microscope by using the “Add” and “Remove” buttons. In addition there are other controls, each unique to the hardware device being configured (ex.: COM Port).

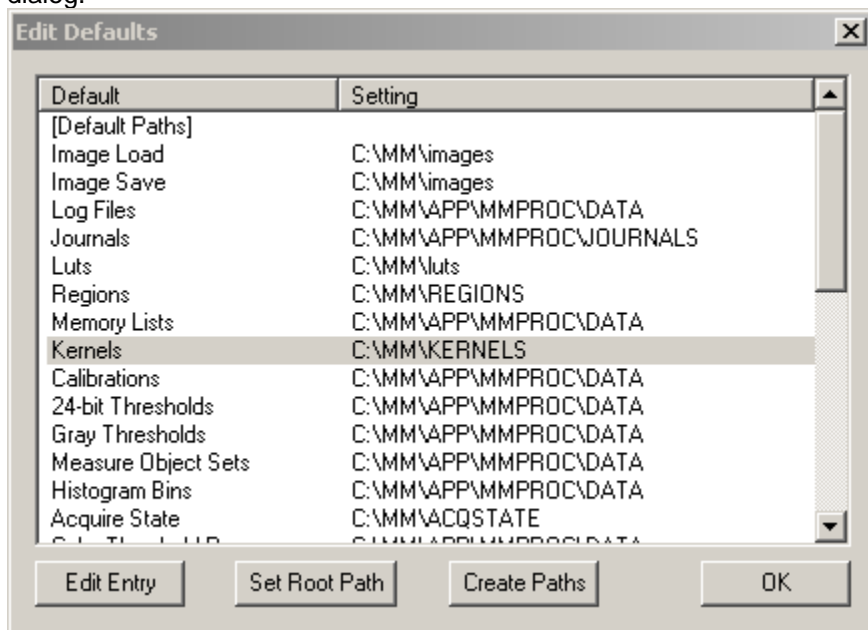
- Configure Acquisition: This dialog allows you to add and configure cameras attached to the MetaMorph system. Different camera drivers can be added and removed from the “Installed Drivers” pane by using the “Add” and “Remove” buttons.



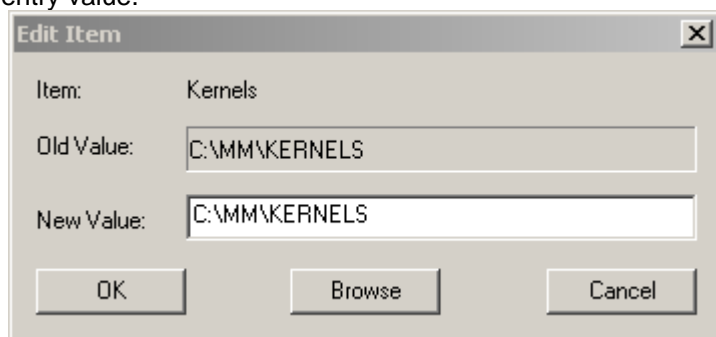
The “Configure” button brings up a dialog specific to the camera highlighted under “Installed Drivers”. This is where camera default settings are setup.

Edit Defaults

The initial “Edit Defaults” interface is as follows. Listed are default file locations for various configuration files. Each entry can be edited and new entries can be created using the buttons at the bottom of the dialog.

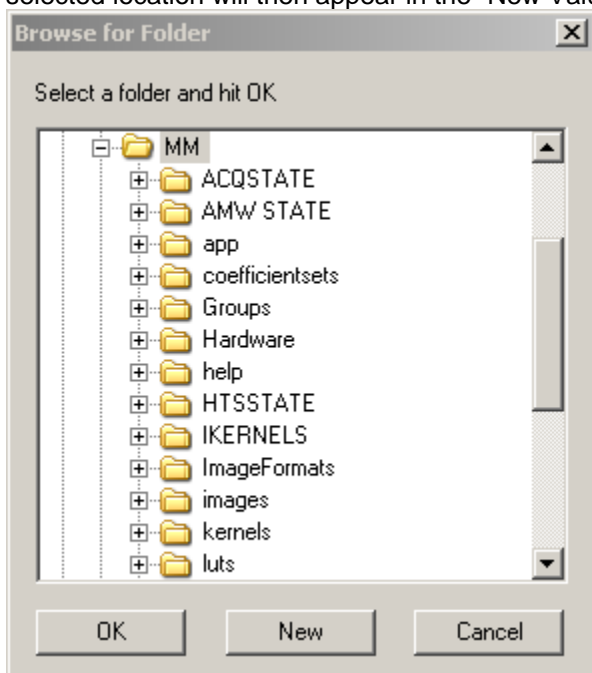


- Edit Entry: By typing a new directory path in the “New Value” parameter box you can change the entry value.



Instead of typing the value directly into the “New Value” parameter box, you can press the “Browse” button and select an existing directory location or create a new one using the “New” button. The

selected location will then appear in the “New Value” parameter box.



- Set Root Path: This is used to set the location of the MM distribution. By default this is C:\MM and should not be routinely changed.
- Create Paths: Creates or updates any changes made via the “Edit Default” interface.
- OK: Closes the dialog.