

ARTICLE #
T20090

PRODUCTS
MetaMorph®
MetaFluor®
MetaVue®

CREATED
15-July-2008

LAST UPDATED
20-August-2008

Nikon TE2000 Hardware Installation

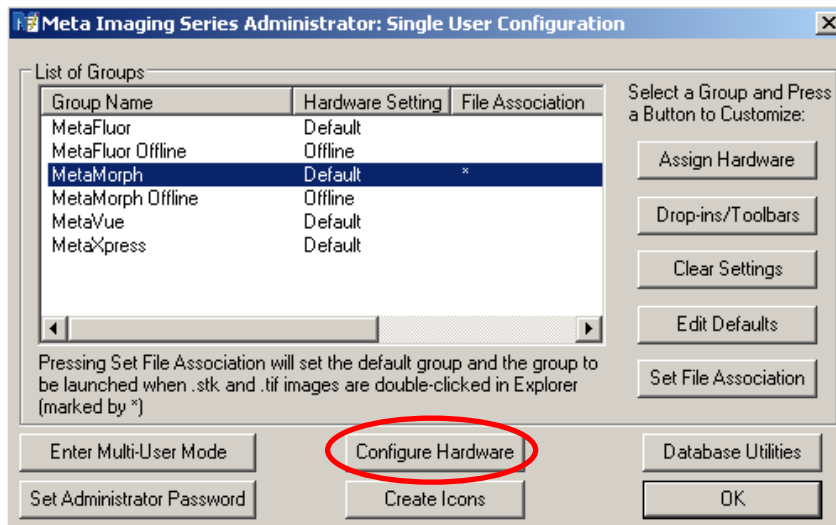
Overview

- Meta Administrator application is located in the Meta Imaging Series folder on your desktop
- For detailed instructions on using Meta Administrator specific functions see articles #T20091 and T20092
- All Meta Administrator tasks must be completed before attempting to configure devices within MetaMorph
- Please install all Nikon drivers as per instructions from Nikon

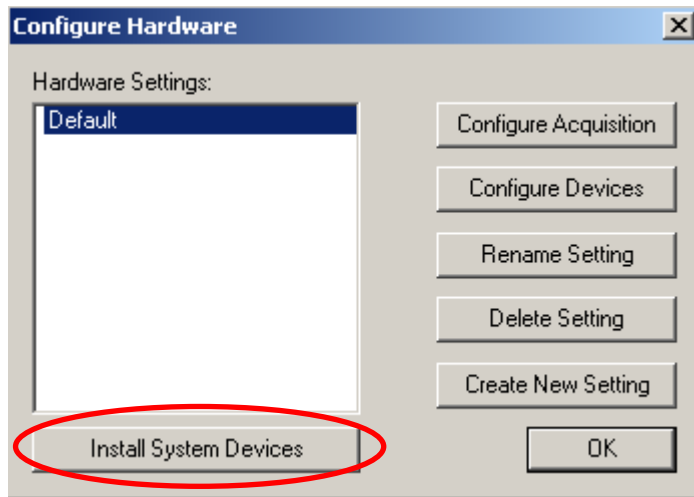
Meta Series Administrator Instructions



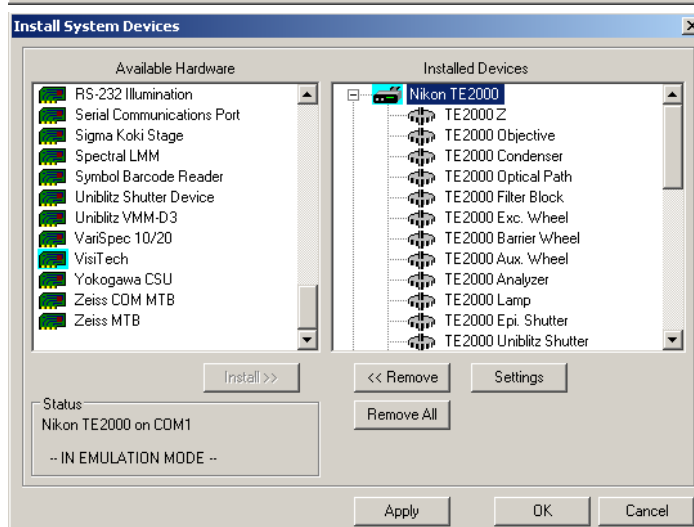
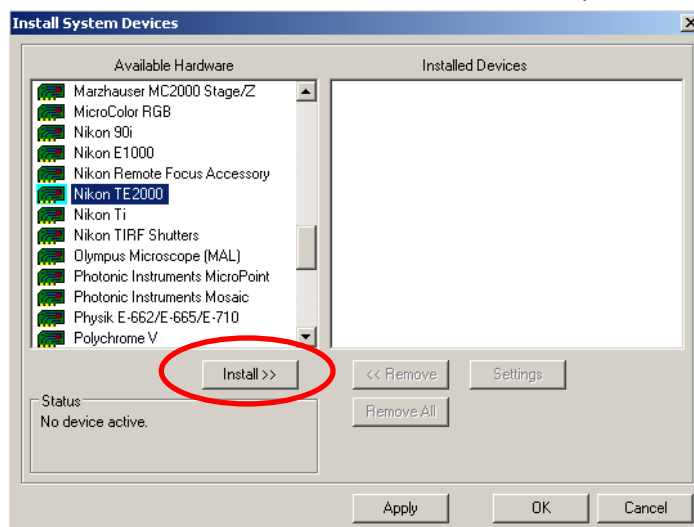
1. Open the Meta Imaging Series Administrator.



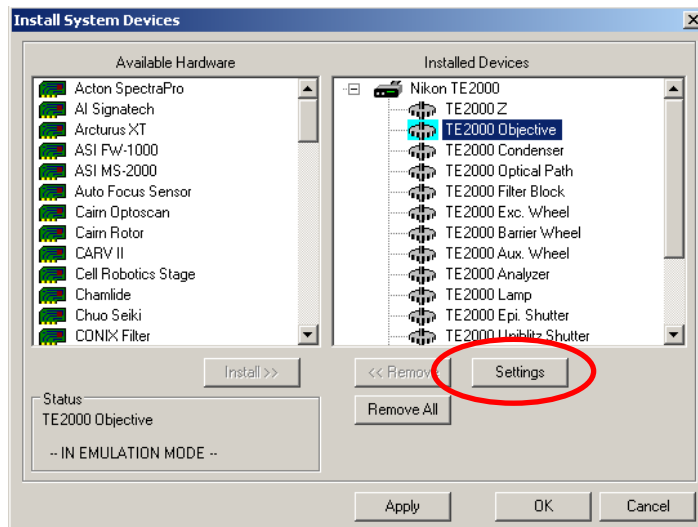
2. Click Configure Hardware.



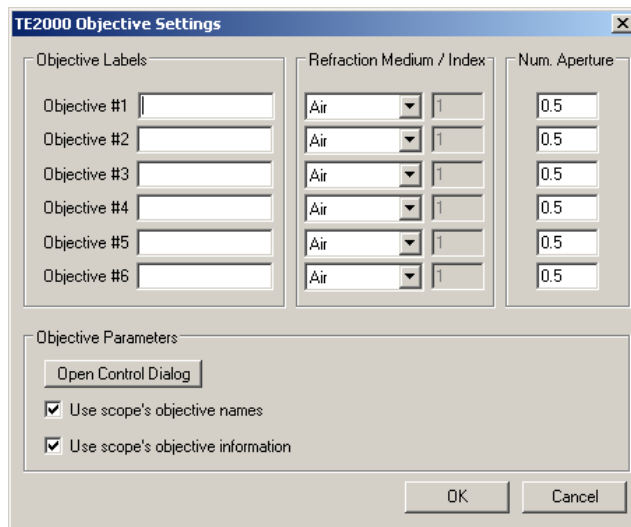
3. Click on Install System Devices.
4. Within the list of devices, choose the Nikon microscope to be installed and click Install.



- Choose each item within the installed device and click on Settings.

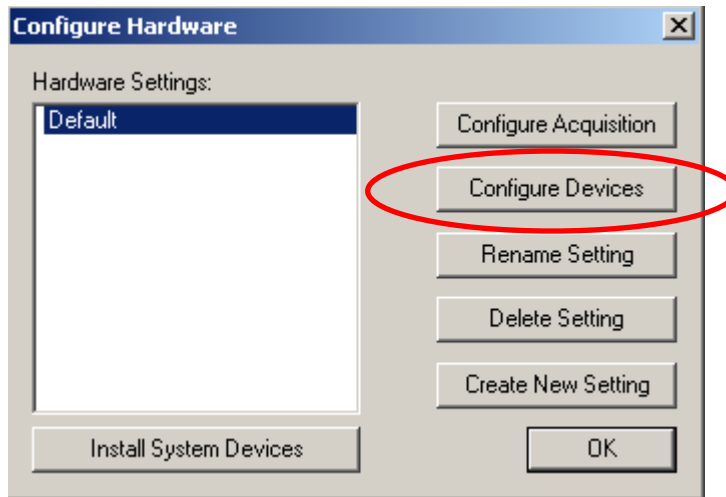


- When a window opens, adjust appropriately for each apparatus.

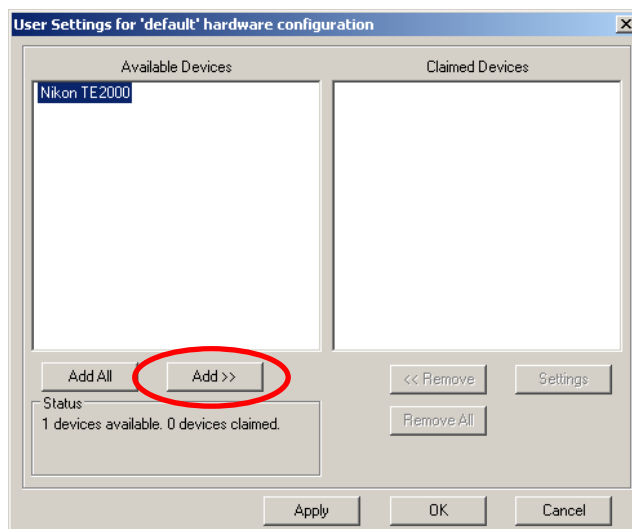


- Click OK.

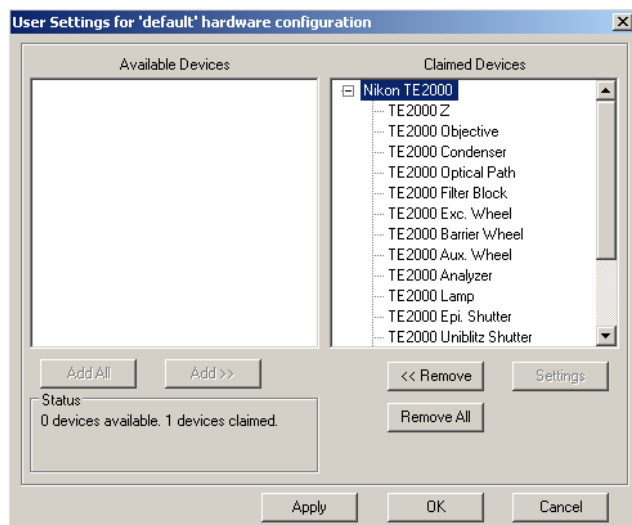
8. Click on Configure Devices.



9. Click on each item listed on the left hand side and click Add.



10. Each device will move to the right hand side of the window and is now "claimed" by MetaMorph.

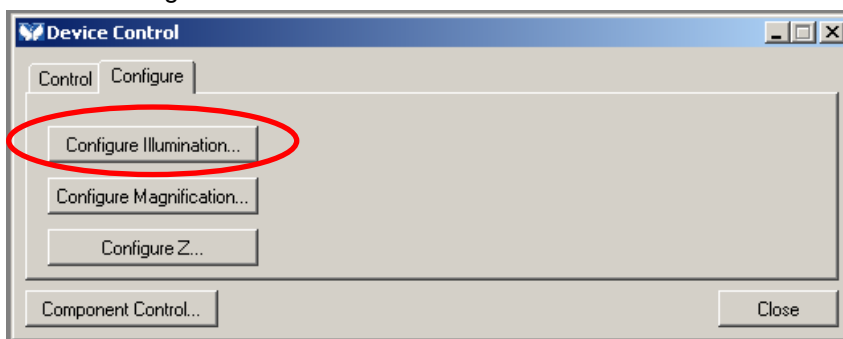


11. Click OK.

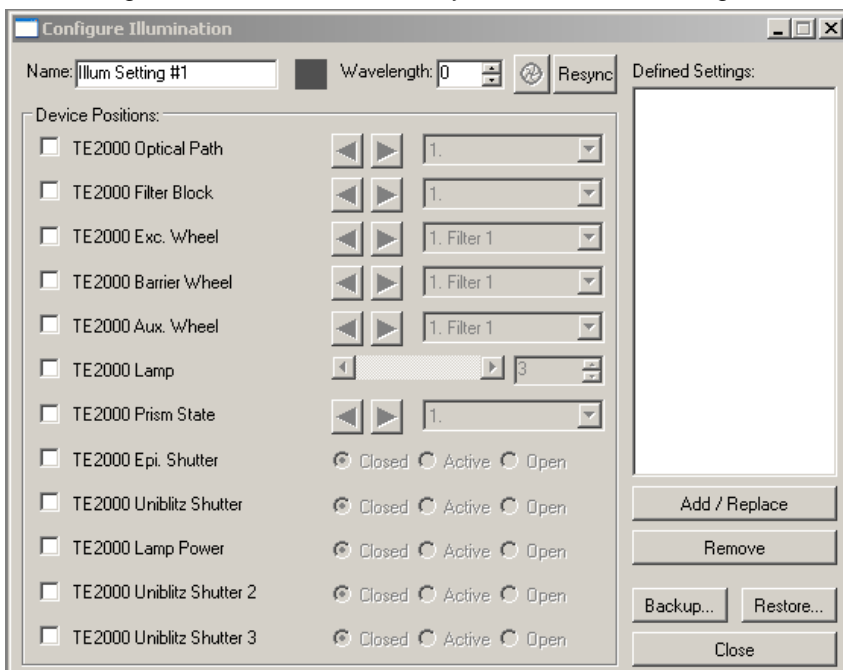
MetaMorph Instructions



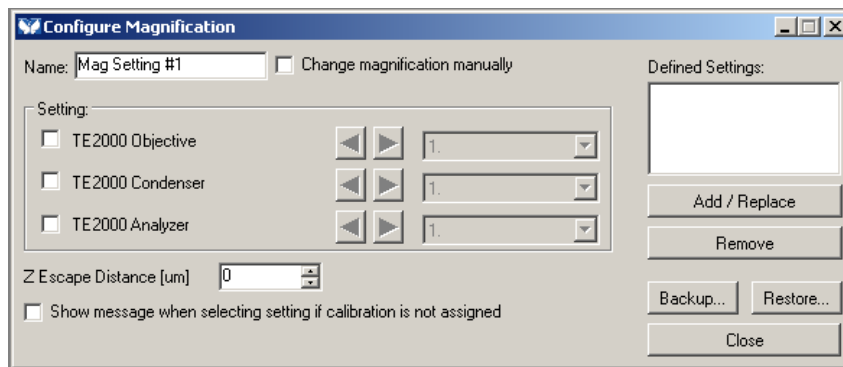
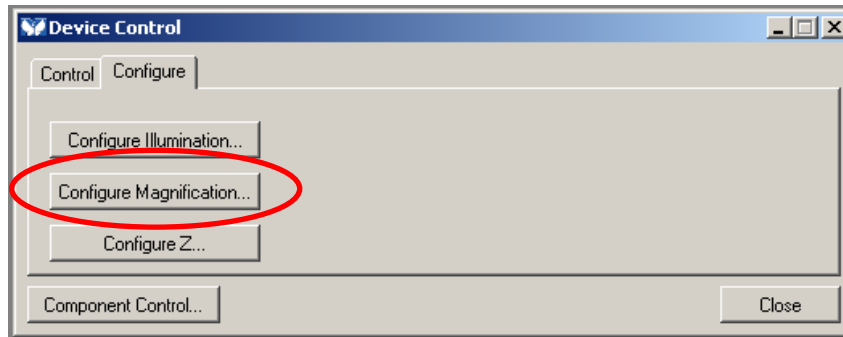
1. Open MetaMorph.
2. Click on Devices drop down menu.
3. Choose Device Control.
4. Choose the Configure tab



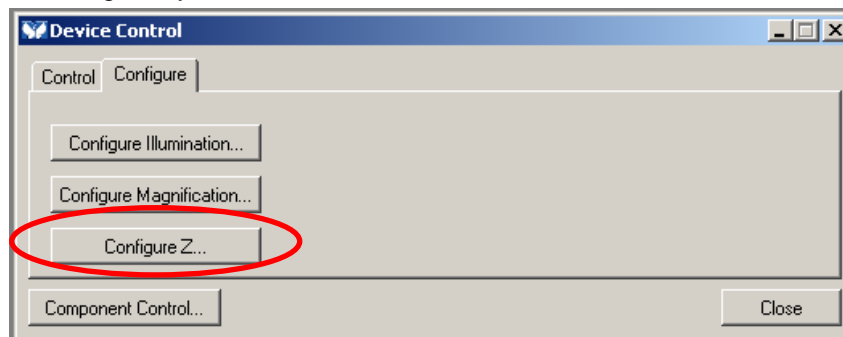
5. Click on Configure Illumination and name your illumination settings.



- Next, click on Configure Magnification and set up your objectives.



- Configure Z is used to control the Z position of your objectives or your stage...depends on how you've configured your devices!



- Click on close.