

Updating to *Meta Imaging Series* Version 6.3 without Current Software Maintenance

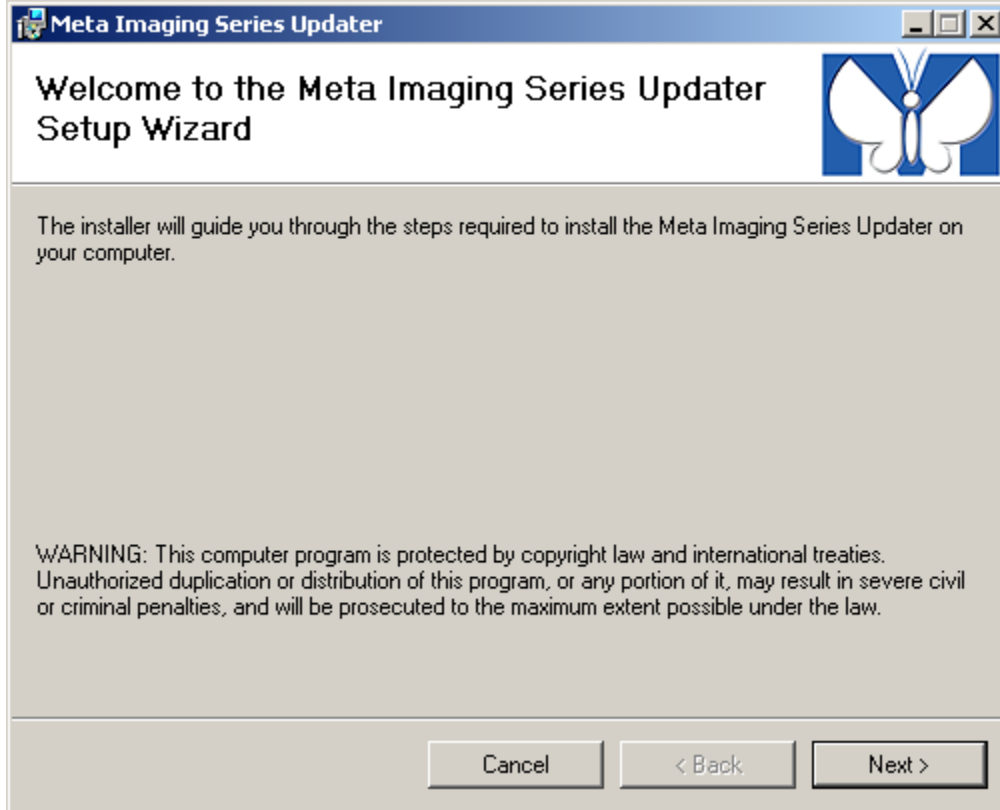
Technical Note
#20078
MetaMorph, MetaFluor,
Metavue

Created
29-Apr-2008

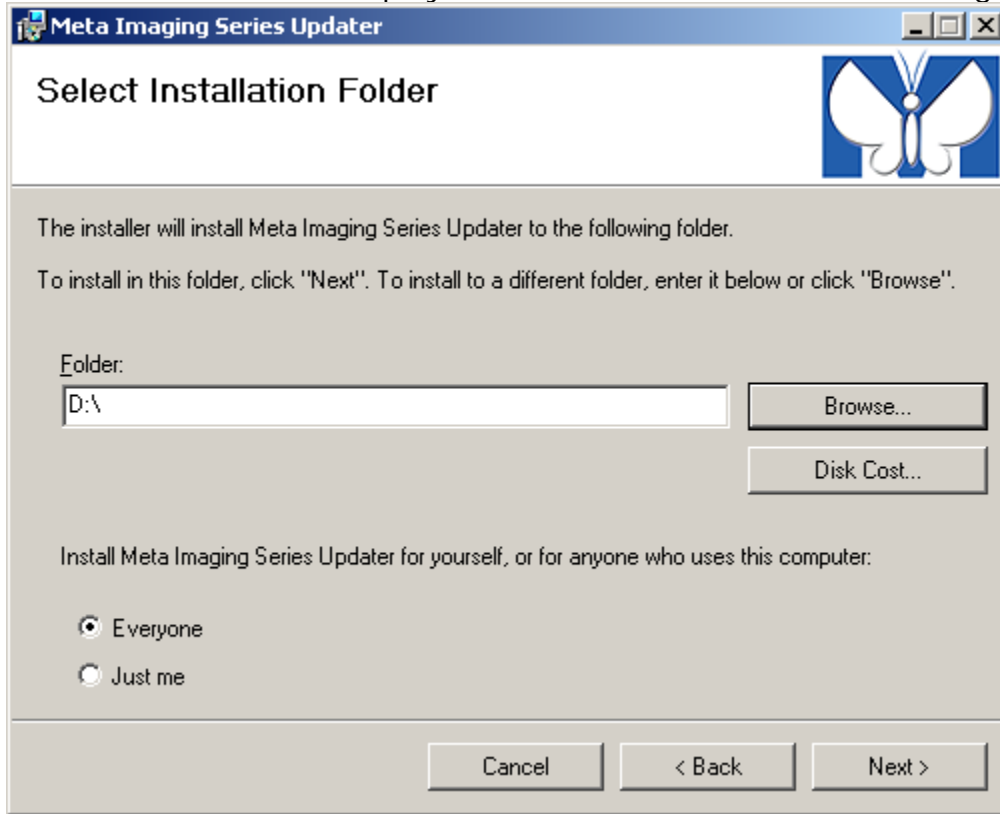
Last Reviewed
22-Oct-2008

1. Open a Web browser, visit < <http://www.meta.moleculardevices.com/updates> > and enter the system ID to log in.
2. Visit the page offering the Version 6.3R7 update or whatever other updates you are able to download and from that page download the Version 6.3R7 update's two files. *MM635.zip* contains the software update, and *MMUpdate.msi* is the installer for the Version 6.3 *Updater*.
3. Copy the *MMUpdate.msi* file to the *MM* folder on drive C. Note that this file is 2,737 KB in size.
4. Run the *MMUpdate.msi*. This installs the Version 6.3 *Updater*.
5. When the *MMUpdate.msi* installer finishes, it launches *Meta Imaging Series Updater*. This *Updater* understands how to apply updates for Versions 6.3R0 through Version 6.3R7, **but it is unable to install updates for Systems that are not covered by current Software Maintenance. Exit out of the Updater.**
6. Open a Web browser, and visit < <ftp://ftp.meta.moleculardevices.com/support/mmupdate/MMUpdate.msi> >, which will start download of the installer for a release of the *Updater* that handles Systems with expired Software Maintenance plans. Note that this file is 438 KB in size.
7. Copy this second *MMUpdate.msi* into the *MM* folder on drive C.
8. Install the *Updater* that handles Systems with expired Software Maintenance plans. To do this, follow Steps 8a-8g:

8a. Run the second *MMUpdate.msi*. This displays the opening screen of the *Setup Wizard*:



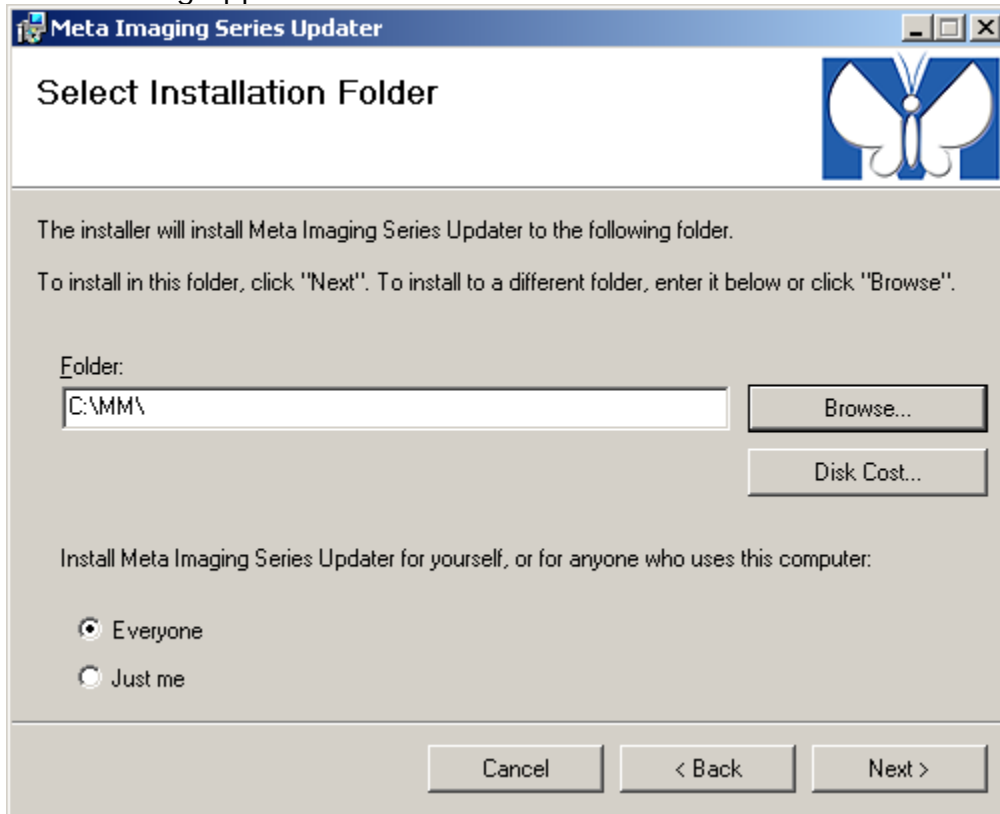
8b. Choose *Next*. This displays the *Select Installation Folder* dialog:



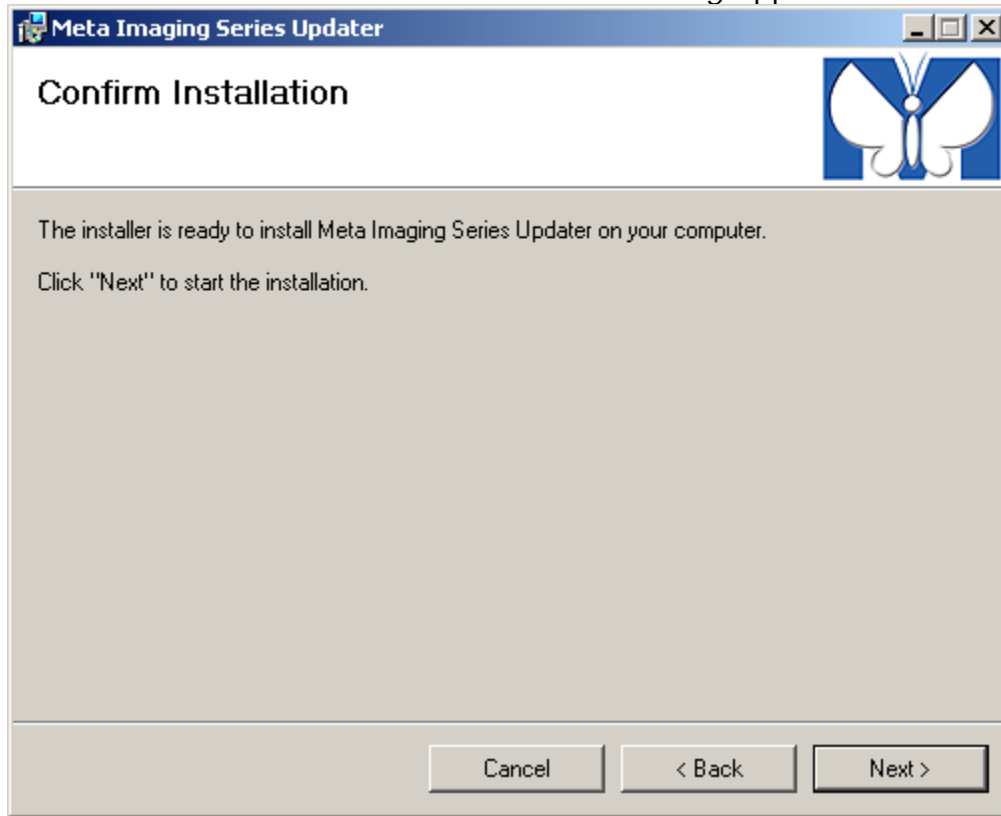
8c. Choose *Browse*; this displays the *Select Installation Folder* dialog.

8d. Select the folder in which *Meta Imaging Series* is installed. In our example, that folder is the *MM* folder on drive *C*. Once you select the folder the *Select Installation*

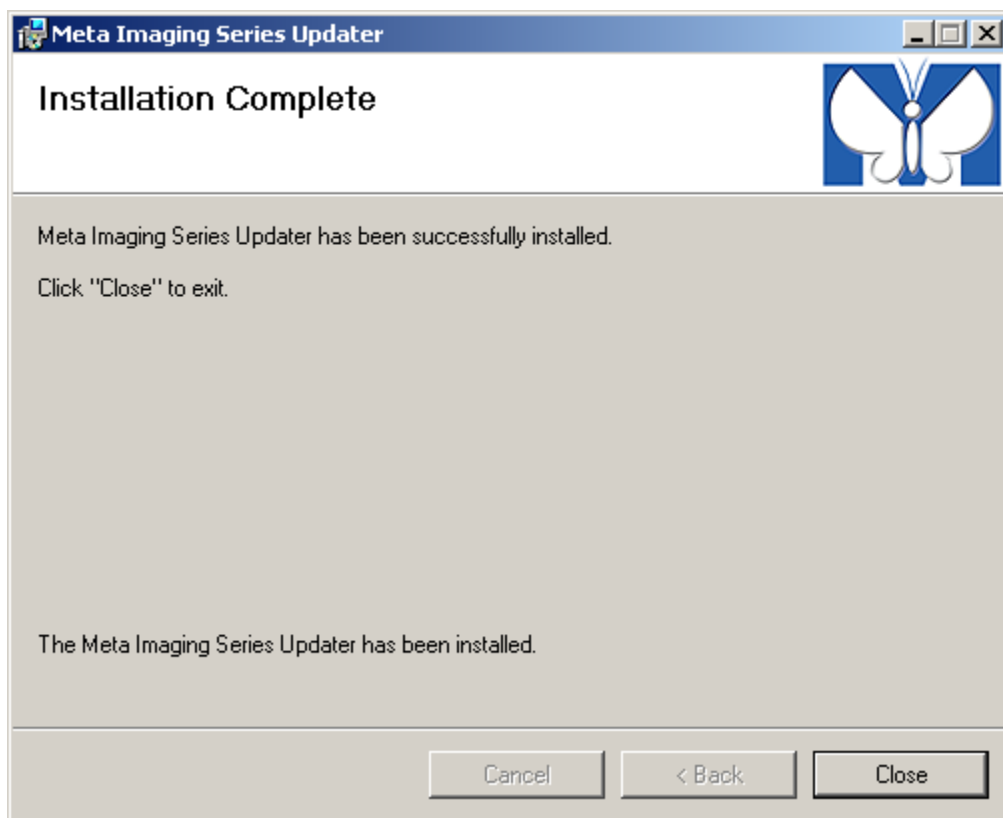
Folder dialog appears with the folder's name listed:



8e. Choose *Next*. The *Confirm Installation dialog* appears:



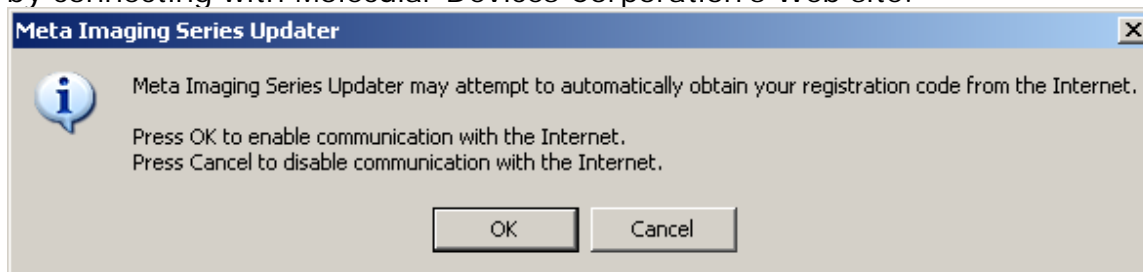
8f. Choose *Next*. The Wizard installs the *Updater* and then displays the *Installation Complete dialog*:



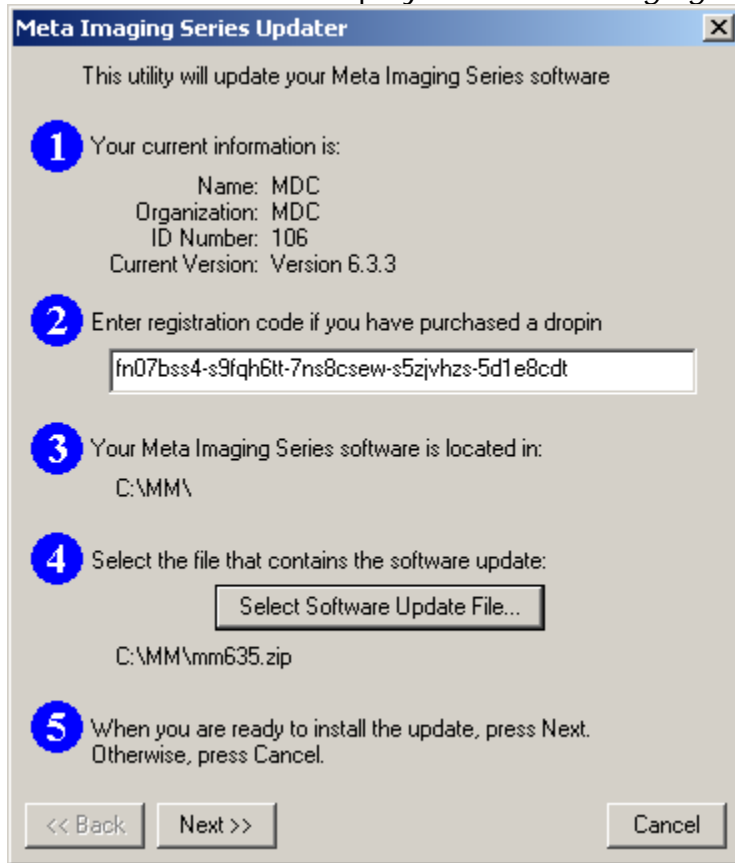
8g. Choose *Close*.

9. Use the *Meta Imaging Series Updater* to apply an update. To do this, follow Steps 9a-9f:

9a. Start the *Meta Imaging Series Updater*. It offers to obtain your registration code by connecting with Molecular Devices Corporation's Web site:

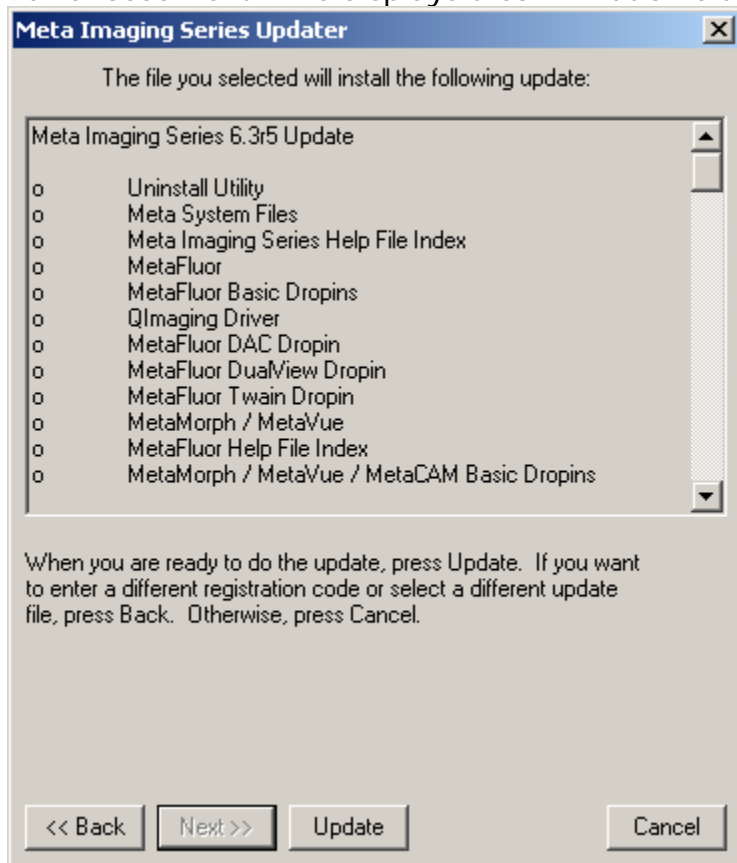


9b. Choose *OK*. This displays the *Meta Imaging Series Updater* dialog:

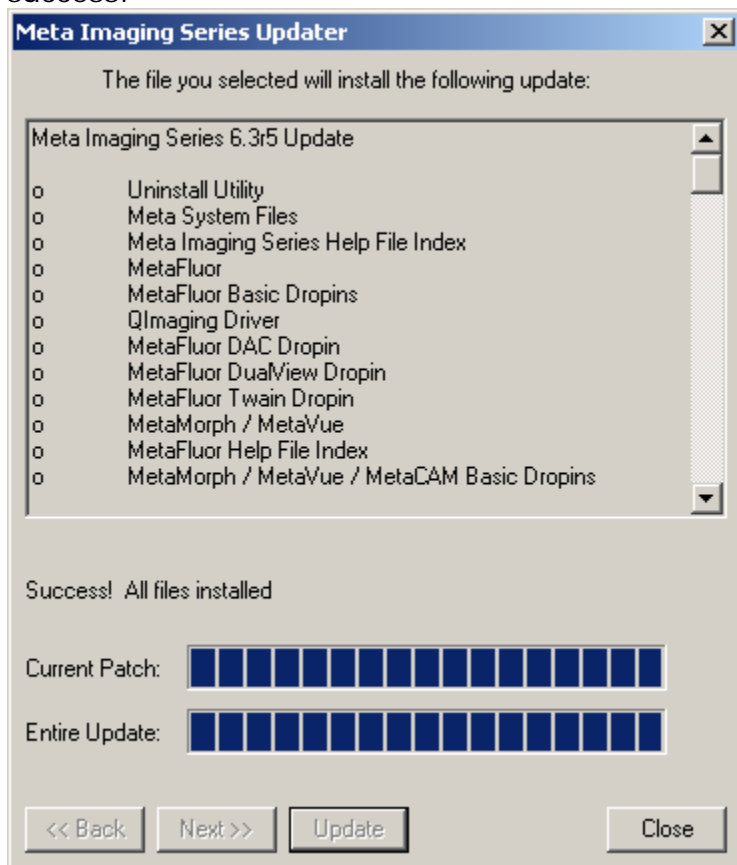


9c. Choose *Select Software Update File*, then browse to the *MM637* update file. Once that completes, the *Updater* displays the *Meta Imaging Series Updater* dialog with the correct update file listed, as in Step 9b, above.

9d. Choose *Next*. This displays a confirmation dialog:



9e. Choose *Update*. The *Updater* applies the update, and finishes by reporting success:



9f. Choose *Close*. The *Updater* dialog closes.