

## How do I measure the intensity of an image

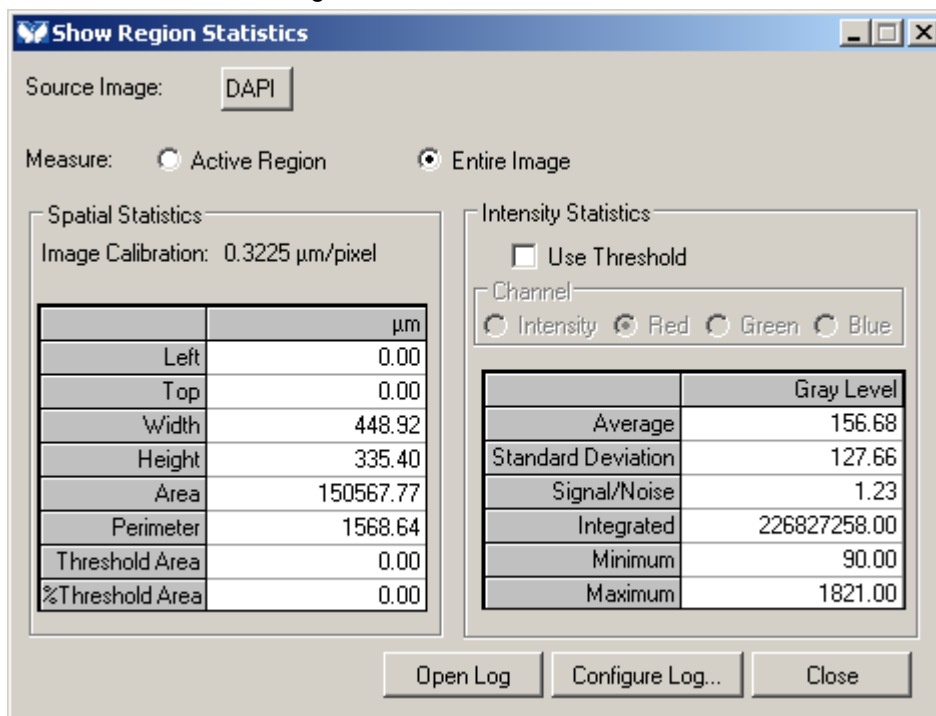
### Question

How do I measure the intensity of an image?

### Answer

Use Show Region Statistics to measure the entire image.

1. Choose Show Region Statistics from the Measure menu.

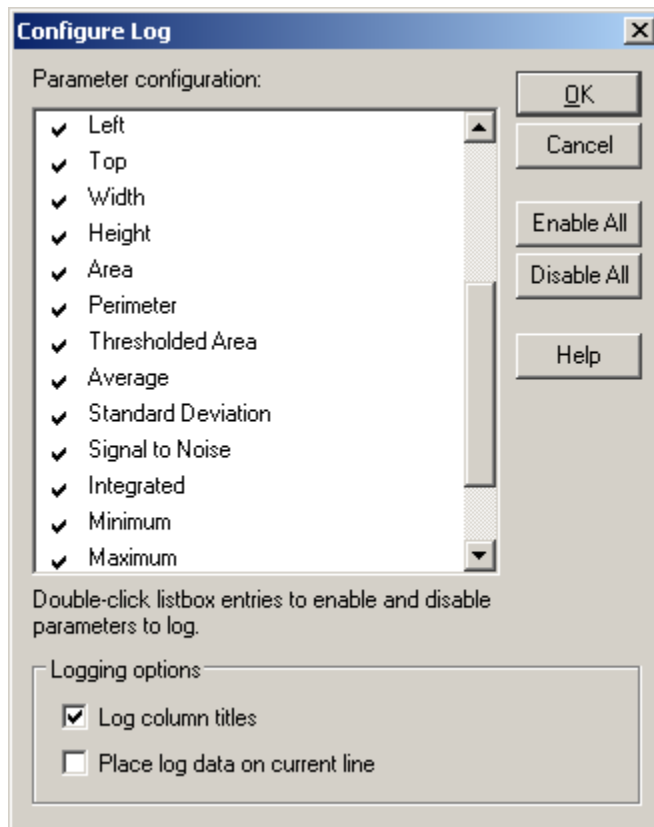


2. Select your image as the Source image.
3. Choose Entire Image.
4. Confirm "Use Threshold" is unchecked.
5. If the image is color, choose the color channel to measure
6. View results on right hand side of the dialog.

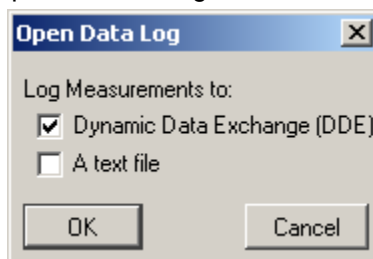


	Gray Level
Average	4.61
Standard Deviation	21.48
Signal/Noise	0.21
Integrated	302310.00
Minimum	0.00
Maximum	253.00

7. Select Configure Log and choose which measurements to send to the Data log. Click OK to close the Configure Log dialog.



8. If the Data log is not open,
  - a. Click Open Log. to open the Data log.



- b. Select whether to log the results to Excel (Dynamic Data Exchange (DDE)) or to a comma delimited text file.
    - c. Choose OK
9. Choose F9: Log Data to send the results to the Data Log.

**Use the cursor to get the intensity of individual points in the image**

1. Point the cursor on the image.
2. Look at the bottom on the Meta application window.

DAPI	30%	1/1	(1383, 836) -> 122	1
------	-----	-----	--------------------	---

3. Look at the 4<sup>th</sup> data panel to see the (X,Y) position of the cursor and -> the value of the pixel under the cursor.