

Using the Märzhäuser Tango-PCI with Meta Imaging Series Applications

Abstract

Installing and configuring the Märzhäuser Tango-PCI for use with Meta Imaging Series Applications.

Instructions

NOTE: Please refer to all Märzhäuser Tango-PCI documentation and materials for important safety, unpacking, installation, and operating instructions.

The Tango-PCI is a PCI-card controller used to drive a motorized XY stage and Z focus. It is compatible with the existing “Märzhäuser LSTEP” driver which is available for MetaMorph.

Hardware Installation

Please follow the instructions in the Märzhäuser documentation, specifically the guides titled “Operating Manual Tango PCI” and “how to install the driver” which can both be found on the Tango-PCI CD-ROM.

ARTICLE #
T20065

PRODUCTS
MetaMorph®
MetaFluor®
MetaVue®

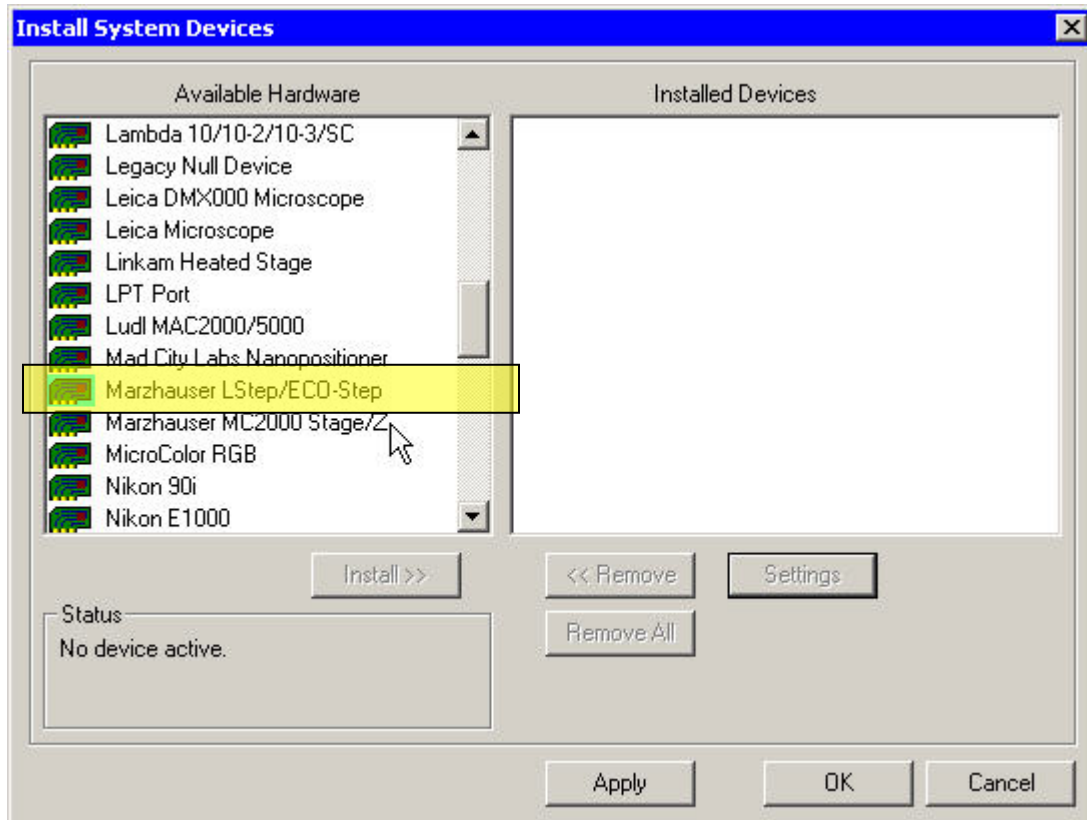
CREATED
16-Oct-2007

LAST UPDATED
16-Oct-2007

Configuration for Meta Imaging Series Applications

Start the Meta Imaging Series Administrator application.

Find the driver called “Marzhauser LStep/ECO-Step” in the Available Hardware list and select it. Press the “Install >>” button to add it to the Installed Devices list.



When the driver is first installed, it will attempt to communicate over COM1 and fail. The following dialog box will be displayed:

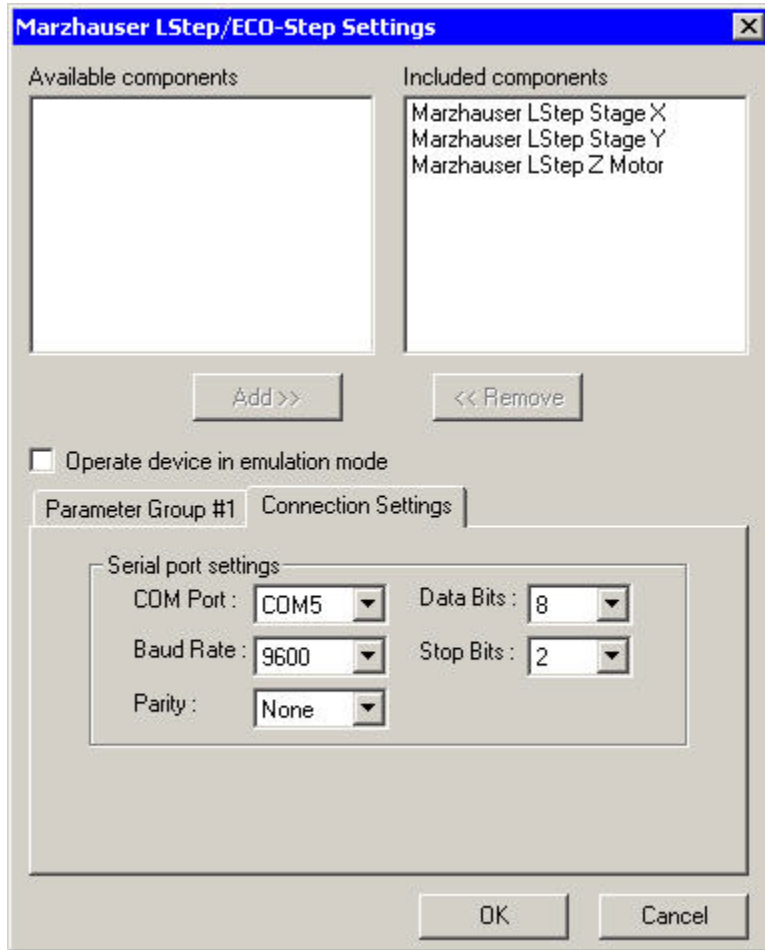


Change the COM Port to the port that was created during the Tango-PCI installation (step #15 in the “how to install the driver.txt” file from Märzhäuser):



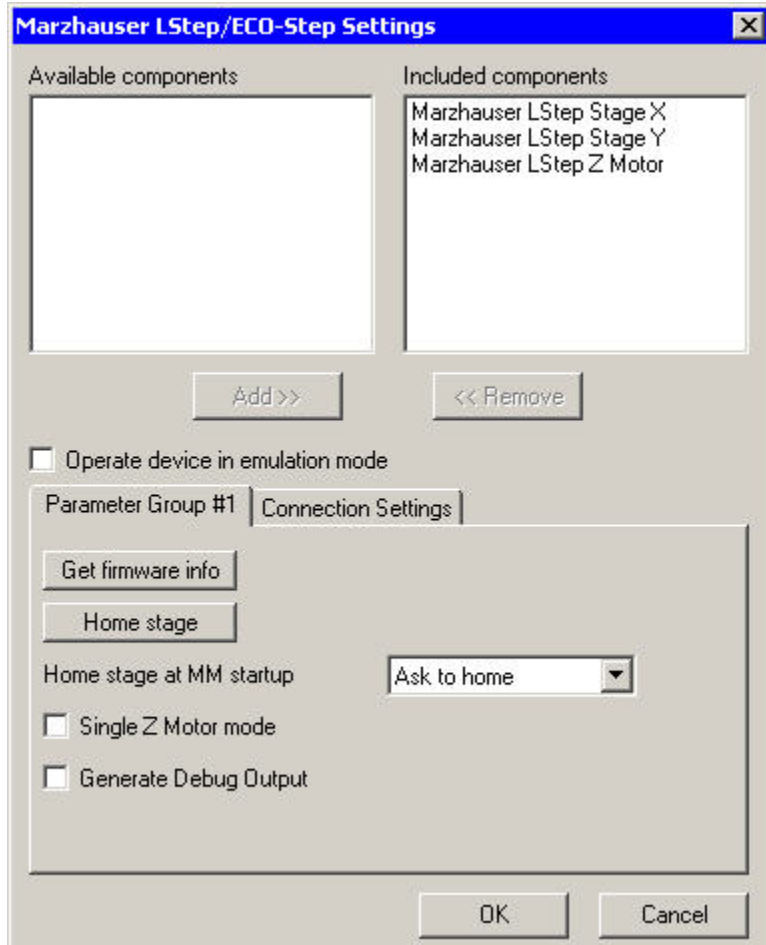
(in this example, the Tango-PCI appears as COM5). Press the “Retry Connection” button after the COM Port has been properly changed. The driver will now correctly install.

Highlight the “Marzhauser LStep/ECO-Step” driver in the Installed Devices list and press the Settings button. The Settings dialog will be displayed:



This dialog box confirms the communication settings, and displays the components recognized by the Tango-PCI – in this example, the Stage X and Y motors and the Focus Z motor have been recognized.

Choose the “Parameter Group #1” tab to set preferences for the Tango-PCI:



In this dialog box you can display the firmware information, home the stage, and set the stage behavior at startup.

The firmware dialog will appear similar to this:



This information can be useful for diagnosing problems.

If there are any further questions, please contact Technical support at 800-635-5577 x1820 or support.dtn@moldev.com.