

Network License Management

ABSTRACT

This document describes how to use the tools that come with the Sentinel dongle to view and cancel network licenses.

OVERVIEW

MetaMorph supports a network license. Using the network license, multiple copies of MetaMorph Premier Offline, executing on different client computers, can start and finish, as long as the total number of simultaneously executing software packages is less than or equal to the number of licenses maintained by the network license. The network key server hosts the network licenses.

Occasionally, the administrator may determine that a system has frozen or a user is exceeding their time limit, and the administrator needs to remove that system or user from the pool of licenses. The procedure described below can be used by the administrator to cancel an allocated network license.

REQUIREMENTS

1. MetaMorph Premier Offline version 7 or later.
2. Valid Network License.
3. Functioning and Configured Network Key Server
4. Administrator Access to the Network Key Server

ARTICLE #
T20063

PRODUCTS
MetaMorph®

CREATED
1-Jun-2007

LAST UPDATED
1-Jun-2007

PROCEDURE

1. Navigate to:

C:\Program Files\Common Files\SafeNet Sentinel\Sentinel Protection Server\WinNT

and run the PwdGenUtility.exe. The following will appear:

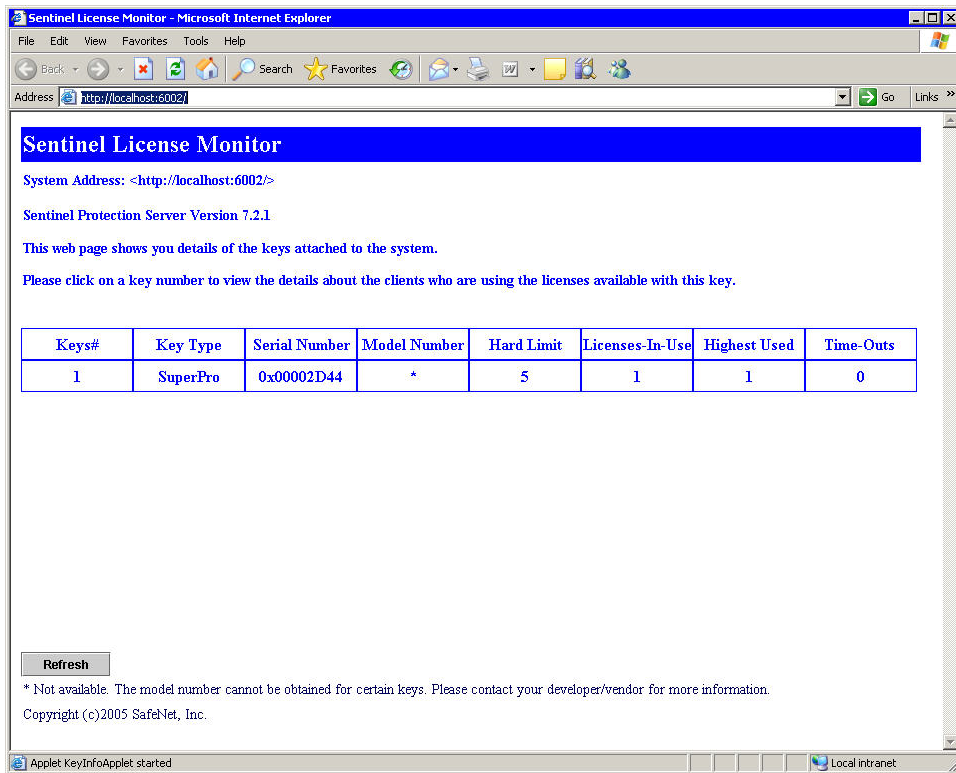


2. Enter a password into the Enter Password and Confirm Password dialogs and click on OK. Please save this password as it will be needed for Step 6, below.
3. The following dialog indicates the password has been saved.

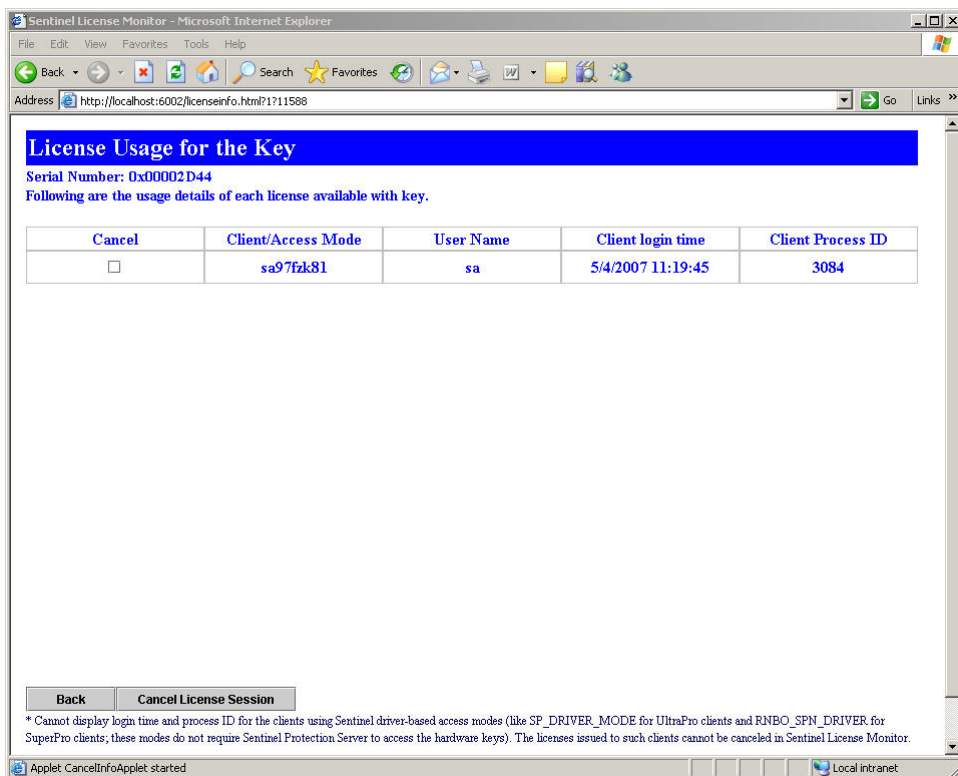


4. View the Sentinel License Monitor. Open a web browser and go to <http://localhost:6002/>. If you are using a system other than the network key server, replace "localhost" with the TCP/IP address of the network key server. You may be prompted to install the Java 2 runtime. Please do so, as it is necessary for the Sentinel License Monitor to work correctly.

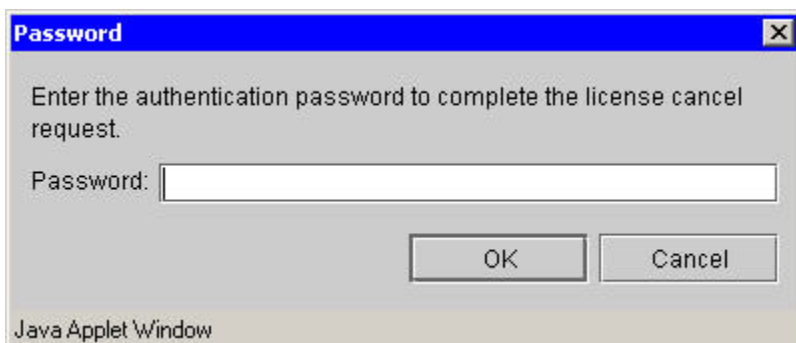
A screen similar to the following will appear:



- Click on a key number to view the license usage screen for that key.



- Select the licenses that you wish to cancel. Up to 10 licenses may be canceled in one operation. Once all licenses are selected, click on the Cancel License Session button. You will be prompted for the password that was entered when the Sentinel Password Generation Utility was run in step 2. Enter the password then click on OK.



The selected license(s) will be cancelled.