

## Installing MetaMorph® 7.0 using a network license

### OVERVIEW

This document describes how to install MetaMorph 7.0 using a network key. After installing the key and a key server on a networked computer, you can install MetaMorph on multiple client computers on the same network. These computers will not need individual MetaMorph keys. The number of clients that can run MetaMorph at the same time is determined by the license information programmed into the network key. MetaMorph can be installed on an unlimited number of client machines, as long as at least one network seat is available to perform the install.

### NOTES

- The computer acting as the key server does not need to have MetaMorph installed.
- When installing MetaMorph on client computers, you will need to know the IP address of the computer running the key server, as well as your system ID.
- The computer acting as the key server needs a USB port.
- Do not allow the key server computer to "hibernate". If it is in hibernation mode, a client workstation cannot see the key.
- **The network license is not compatible with Windows XP Pro x64, on either the client or server.**

ARTICLE #  
T200057

PRODUCTS  
MetaMorph 7.0 and  
above

CREATED  
19-May-2006

LAST UPDATED  
23-October-2006

### INSTALLING THE KEY SERVER ON A NETWORKED COMPUTER

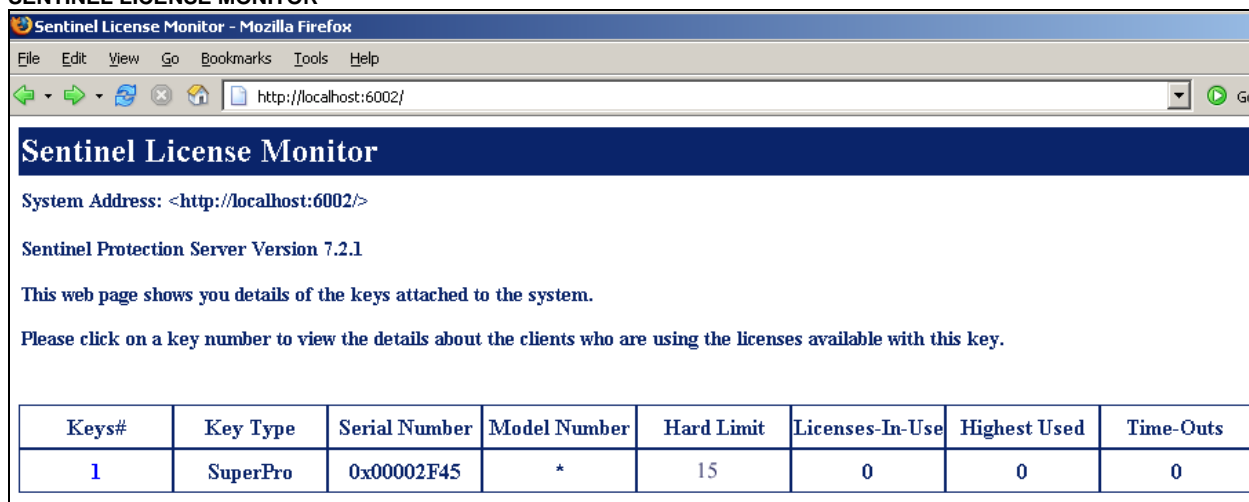
Complete the following procedure to install the key server program on the machine that will act as the key server:

1. Insert the MetaMorph CD into the DVD/CD-ROM drive. The installer screen opens.
2. Click *Explore the CD*. The installer screen closes and Microsoft Windows® Explorer opens to the root directory of the MetaMorph CD.
3. Open the *Setup* folder, then double-click the *Sentinel Protection Installer 7.2.2.exe* application. The Sentinel Protection Installer Wizard dialog box opens.
4. Follow the onscreen instructions to complete the installation.
5. The Sentinel Protection Installer Wizard may prompt you to change the Firewall settings. Answer "yes" to let it change the Firewall to permit the network key access.
6. After the Sentinel software is installed, plug in the network dongle into the USB port on the server computer.
7. The Sentinel License Monitor requires Java to display itself in the web browser. The first time the web page is accessed, it will prompt to install the Java Runtime if that capability is not already installed on the computer. If you would like to pre-install the Java Runtime, you can do so before opening the Sentinel License Monitor web page by installing the software found on this link:  
<http://www.java.com/en/>
8. To confirm that the network key server is running, open the web browser on the key server computer, and enter the following into the Address field:

<http://localhost:6002/>

and press [Enter]. The Sentinel License Monitor opens, as shown in Figure 1:

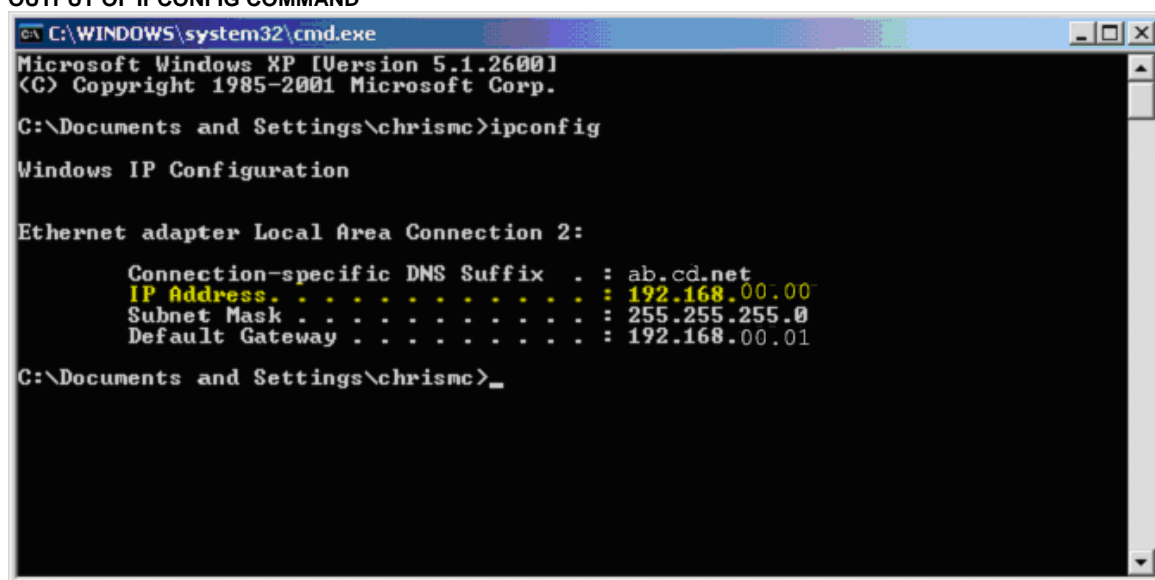
**FIGURE 1**  
**SENTINEL LICENSE MONITOR**



If you see the page shown in Figure 1, the server software is running. This page contains information about the key, including the total number of licenses (*Hard Limit*) and the number of licenses in use.

9. You will need to know the IP address of the server computer when installing MetaMorph on client computers. From the Windows Start menu, select Programs>Accessories>Command Prompt. The Windows command prompt opens.
10. At the command prompt, type `ipconfig` and press [Enter]. The server's IP configuration information is displayed, including the IP address, as shown in Figure 2:

**FIGURE 2**  
**OUTPUT OF IPCONFIG COMMAND**



11. Write down the IP address, type `exit`, and press [Enter] to close the command prompt.

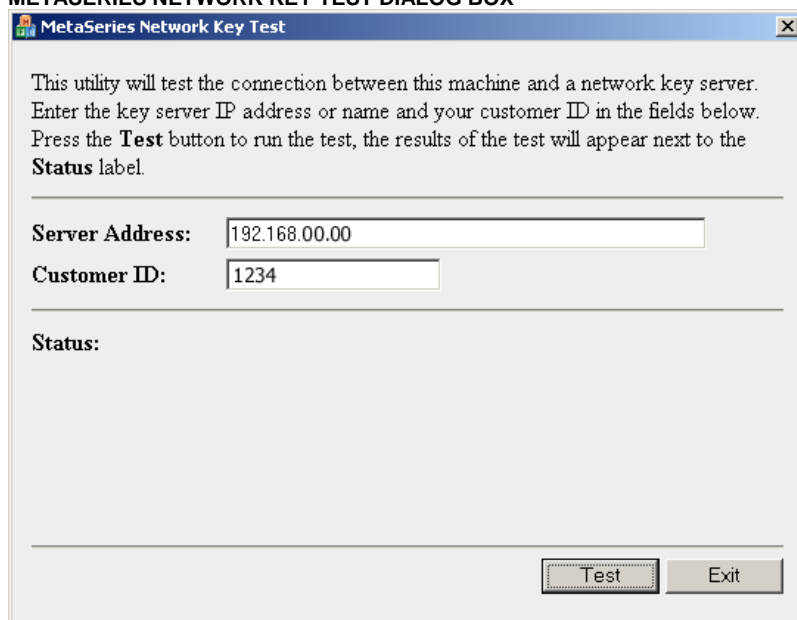
**INSTALLING METAMORPH ON A CLIENT MACHINE USING THE NETWORK KEY SERVER**

After the network key server is installed and running, complete the following procedure to install MetaMorph on a computer on the same network as the key server:

**NOTES:**

- You must have the system ID and IP address of the key server to complete this procedure.
  - If you have an existing MetaMorph key (USB or parallel) on the computer that you are installing MetaMorph on, remove it before starting this procedure.
1. Insert the MetaMorph CD into the DVD/CD-ROM drive. The installer screen opens.
  2. Click *Explore the CD*. The installer screen closes and Windows Explorer opens to the root directory of the MetaMorph CD.
  3. Open the *Tools* folder, then double-click the *NetKeyTest.exe* application. The MetaSeries Network Key Test dialog box opens, as shown in Figure 3:

**FIGURE 3**  
**METASERIES NETWORK KEY TEST DIALOG BOX**

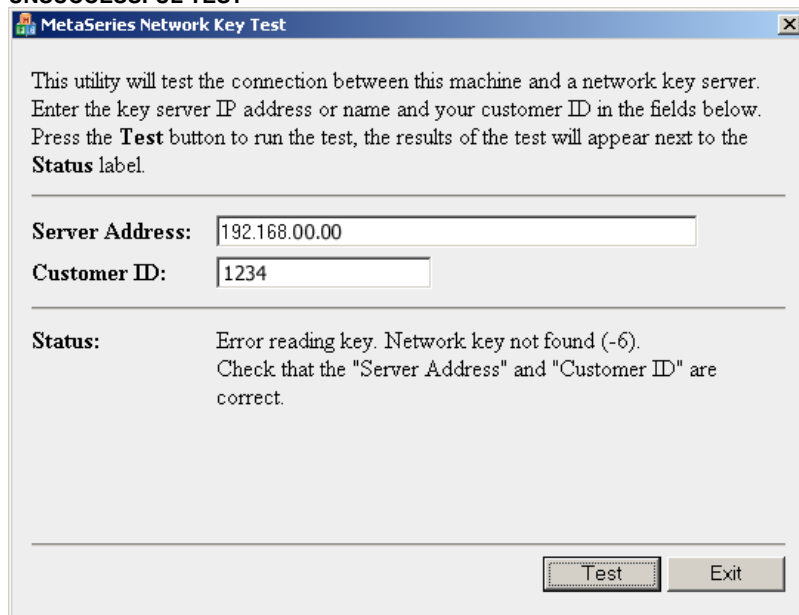


4. Enter the IP address of the key server in the *Server Address* field.
5. Enter the system ID associated with the network key in the *Customer ID* field.
6. Click *Test*. The program will test to ensure that the IP address and ID are valid. If the information is valid and the status field displays the text *Key was successfully read*, skip to Step 8.

**OR**

If the test was not successful, the status field will display an error message, as shown in Figure 4:

**FIGURE 4**  
**UNSUCCESSFUL TEST**

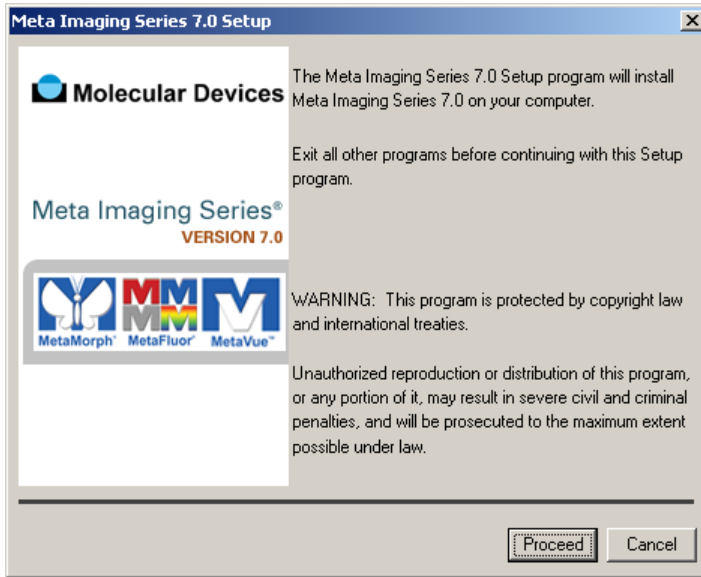


7. If the test was not successful, ensure that the *Server Address* (IP address) and *System ID* fields contain the correct information and click *Test* again. If there is still an error, there may be an issue with your local network. Stop this procedure and contact your Network Administrator. You will not be able to install MetaMorph over the network until the key can be read from the client machine.
8. Click *Exit* to close the MetaSeries Network Key Test.
9. Go back to the MetaMorph CD Windows Explorer window and click *uicmenu.exe* to reopen the MetaMorph installer screen.
10. Click *Install Meta Imaging Series 7.0* and follow the instructions to install MetaMorph.
11. When the Memory Key Drivers dialog box opens prompting you to install the Memory key driver, click *OK*, the memory key driver will install and you will be prompted to restart Windows.

**NOTE:** If you already have the latest Memory key driver installed, you will not be prompted to install it and will not have to restart the computer.

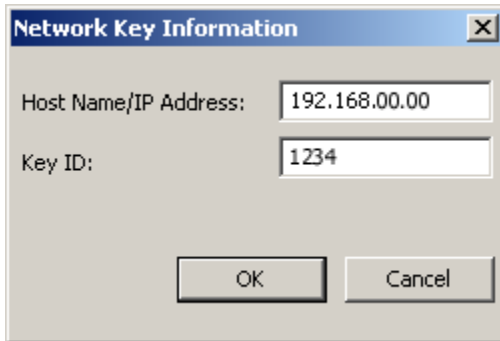
12. Click *Yes* to restart the computer. After you login and Windows restarts, the Meta Imaging Series 7.0 Setup dialog box open, as shown in Figure 5:

**FIGURE 5**  
**META IMAGING SERIES 7.0 SETUP DIALOG BOX**



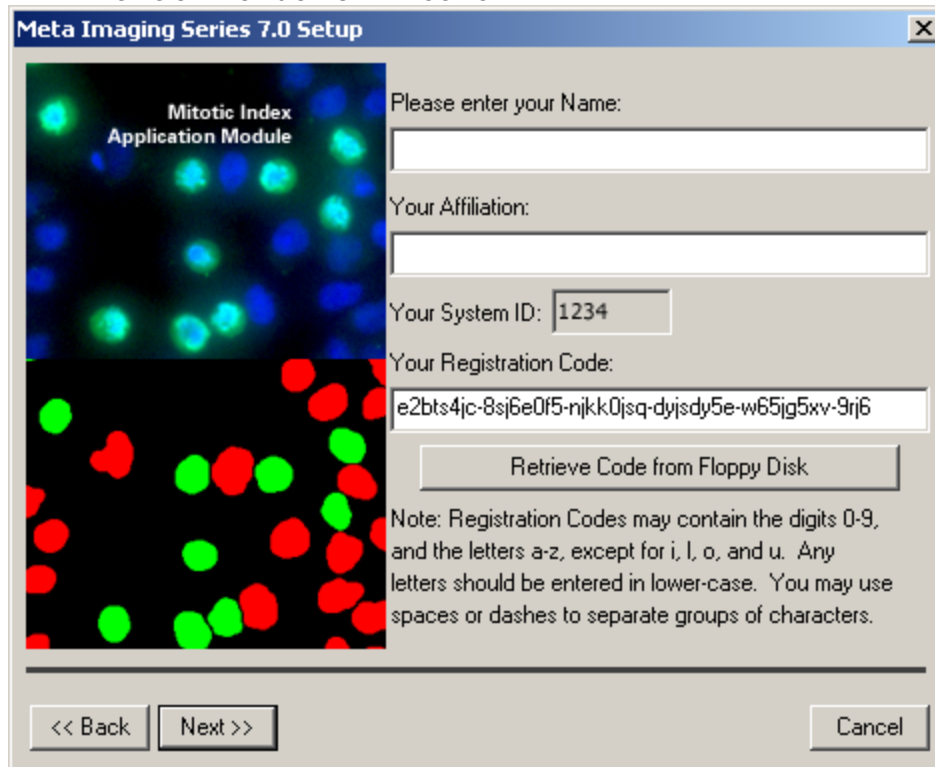
13. Click *Proceed* and continue through the installation procedures clicking *Next* or *OK* as needed.
14. When a dialog box opens asking if you are using a network key, click *Yes*. The Network Key Information dialog box opens.
15. Enter the IP address of the key server and your system ID, as shown in Figure 6:

**FIGURE 6**  
**NETWORK KEY INFORMATION DIALOG BOX**



16. Click *OK*. Your system ID and registration code are read from the key server and filled in on the following setup screen, as shown in Figure 7:

**FIGURE 7**  
**META IMAGING SERIES 7.0 SETUP DIALOG BOX**



17. Enter your name and affiliation and click *Next*.
18. Continue through the installation, clicking *Next* or *OK* as needed until MetaMorph is installed.

© 2006 Molecular Devices Corporation