

## Updating to *Meta Imaging Series* Version 6.3 without a valid Software Maintenance Agreement

---

This procedure assumes:

- Meta Imaging Series version 6.1 or 6.2 is installed on your computer. (If you do not, please follow instructions at <http://support.meta.moleculardevices.com/install/install61.php>)
- You have administrative privileges for the machine.
- Meta Imaging Series software is installed in C:\MM

ARTICLE #T20056

**PRODUCTS**

MetaMorph®  
MetaFluor  
MetaVue

**CREATED**

29-April-2008

**LAST UPDATED**

09-November-2009

**If you have updated your Sentinel System Driver to version 7.2 or later skip this next section.**

---

## Updating Sentinel System Driver to version 7.3

### Files required

The files below are Zip archives. Please download them and unpack each. The result should be an application named *SSDCleanup11* and an application named *Sentinel Protection Installer 7.3.0*.

- *SSDCleanup11* Zip archive: <ftp://ftp.meta.moleculardevices.com/pub/uic/software/Sentinel Drivers/SSDCleanup11.exe>
- *Installer for Sentinel System Driver 7.3.0*:  
[ftp://ftp.meta.moleculardevices.com/pub/uic/software/Sentinel Drivers/Sentinel Protection Installer\\_7.3.0.zip](ftp://ftp.meta.moleculardevices.com/pub/uic/software/Sentinel Drivers/Sentinel Protection Installer_7.3.0.zip)

### Procedure

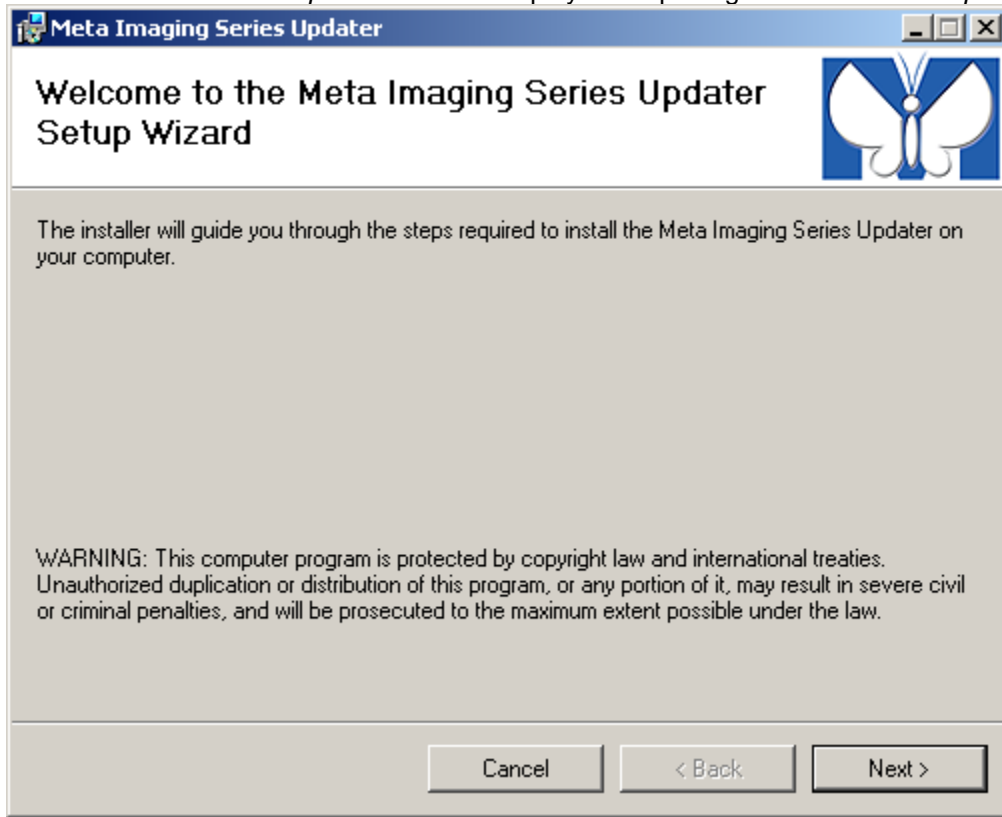
1. If using a USB Memory Key, unplug the Memory Key from the USB port.
2. Uninstall the existing driver using the *Add or Remove Programs* control panel by following steps 2a-2b.
  - a. If the control panel's list of currently installed programs includes a *Sentinel System Driver*, the computer has Version 5.42.0 or earlier of the driver is installed; remove it.
  - b. If the control panel's list of currently installed programs includes a *Sentinel Protection Installer*, the computer has Version 7.0.0 or later of the driver installed; remove it.
3. Run *SSDCleanup11*. Restart the computer if told to do so.
4. Install SSD 7.3.0 using the *Sentinel Protection Installer 7.3.0* application.
5. Start the application *C:\Program Files\Common Files\SafeNet Sentinel\Sentinel System Driver\SetupSysDriver*.
6. Click on the *Configure Driver* button. This opens the *Sentinel Driver* dialog, with one line for the USB ports and one line for each LPT port that the Sentinel Driver recognizes.
7. If the computer has a parallel port, skip steps 7a through 7e. Otherwise, custom-configure the Sentinel driver to act as though one were available, even though it ought not be used for a key.
  - a. Click the *Add* button. This opens the *Add Port* dialog.
  - b. The dialog's *Use this port?* field is set to *Yes*. Change it to *No*.
  - c. The dialog's *Bus Address* field is set to *0*. Change it to *378*.
  - d. The dialog's *Bus Type* field is set to *ISA*. Change it to *PCIBus*.

- e. Choose *OK*. When asked, confirm that you wish to change the settings of this port. This closes the *Configure Port* dialog.
8. The Sentinel System Driver will converse with all parallel ports for which the entry in the *Use?* Column is *Yes*. The Driver need not converse with ports to which the key is not attached. For each port to which the key is not attached, follow steps 8a-8c.
- a. Highlight the line for the parallel port and click on the *Edit* button.
  - b. This displays the *Configure Port* dialog.
  - c. The dialog's *Use this port?* field is set to *Yes*. Change it to *No*, and choose *OK*. When asked, confirm that you wish to change the settings of this port. This closes the *Configure Port* dialog.
9. Choose *OK*. This closes the *Sentinel Driver* dialog.
10. Exit the *Sentinel System Driver* application.
11. Attach the memory key.
- 

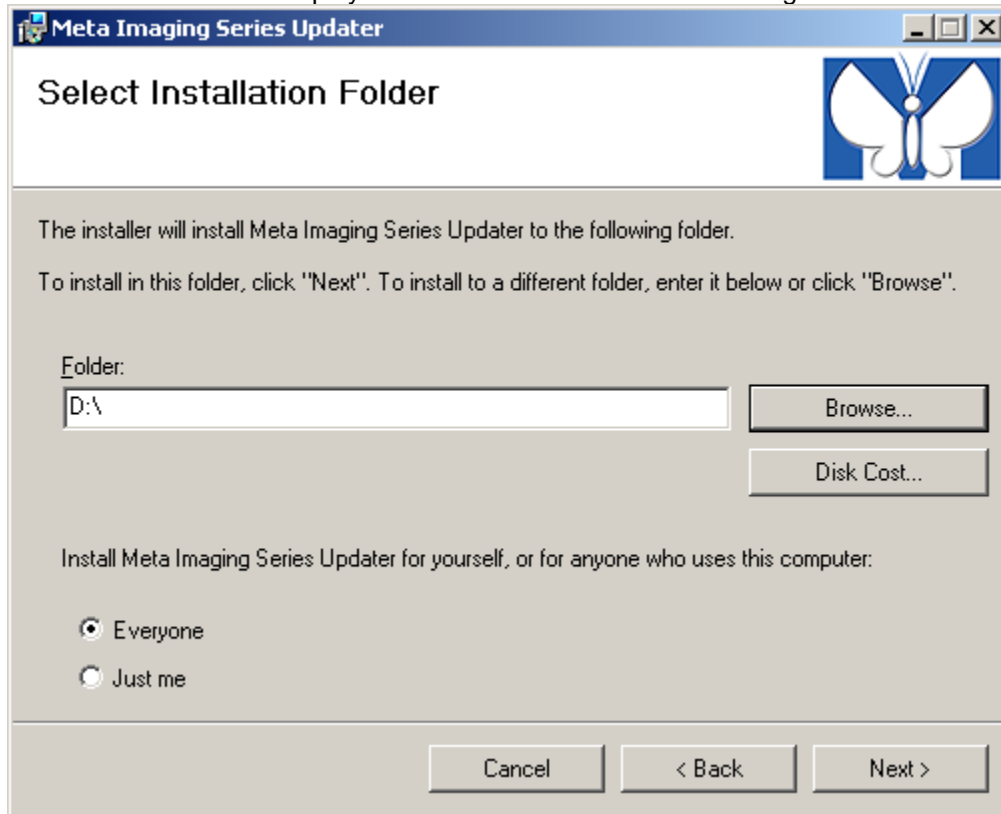
## Updating the Meta Imaging Series Updater Program

1. Open a Web browser, visit < <http://www.meta.moleculardevices.com/updates> > and enter the system ID to log in.
2. Visit the page offering the latest version of 6.3 update that was released before the software maintenance agreement expired. From that page download the update's patch file- *MM63#.zip*.
3. Open a Web browser, and visit < <ftp://ftp.meta.moleculardevices.com/support/mmupdate/MMUpdate.msi> >, which will start download of the installer for a release of the *Updater* that handles Systems with expired Software Maintenance plans. Note that this file is 438 KB in size.
7. Copy this second *MMUpdate.msi* into the *MM* folder on drive C.
8. Install the *Updater* that handles Systems with expired Software Maintenance plans. To do this, follow Steps 8a-8g:

8a. Run the second *MMUpdate.msi*. This displays the opening screen of the *Setup Wizard*:

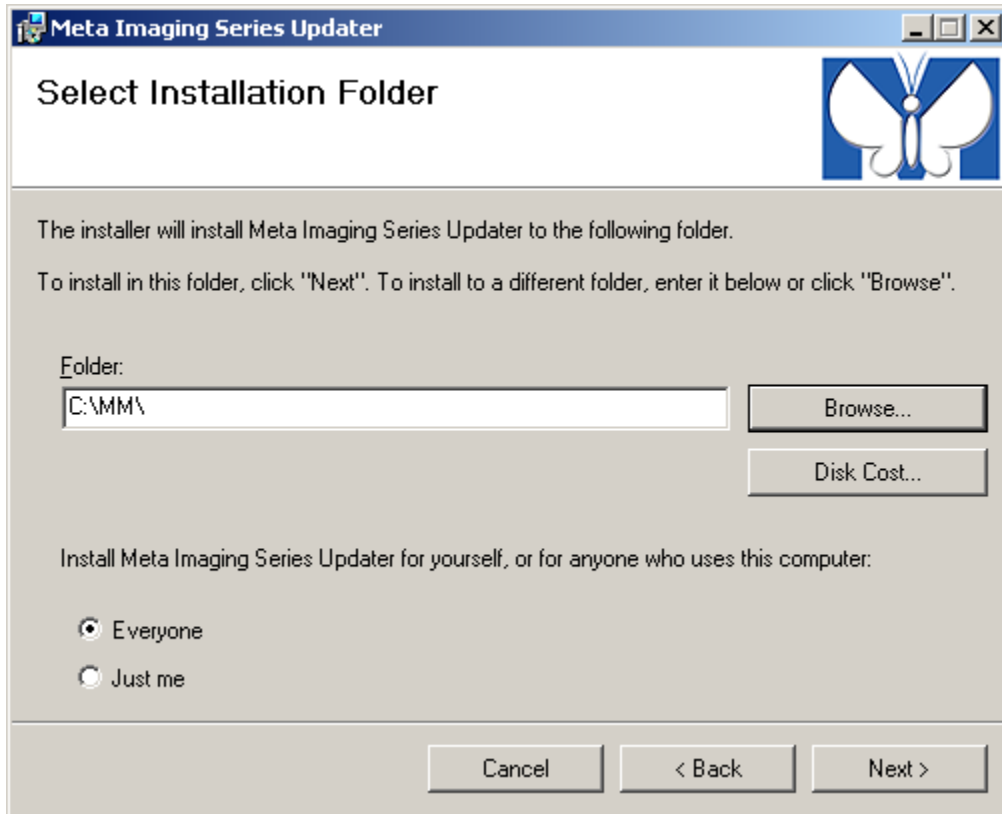


8b. Choose *Next*. This displays the *Select Installation Folder* dialog:

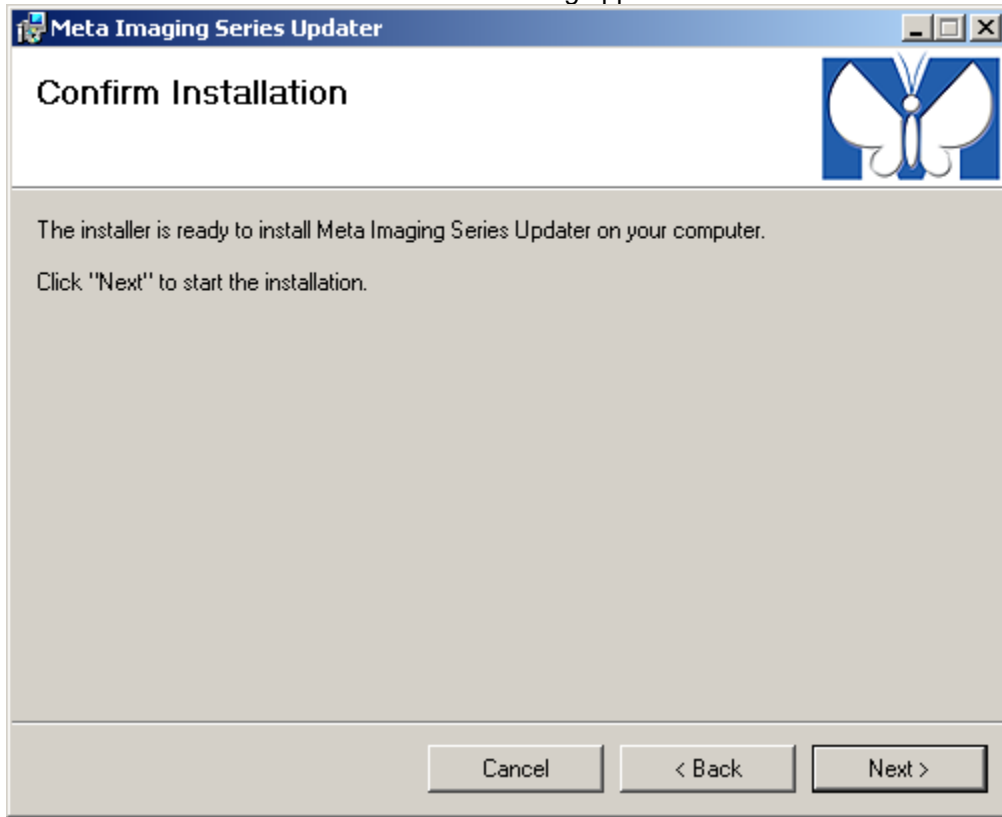


8c. Choose *Browse*; this displays the *Select Installation Folder* dialog.

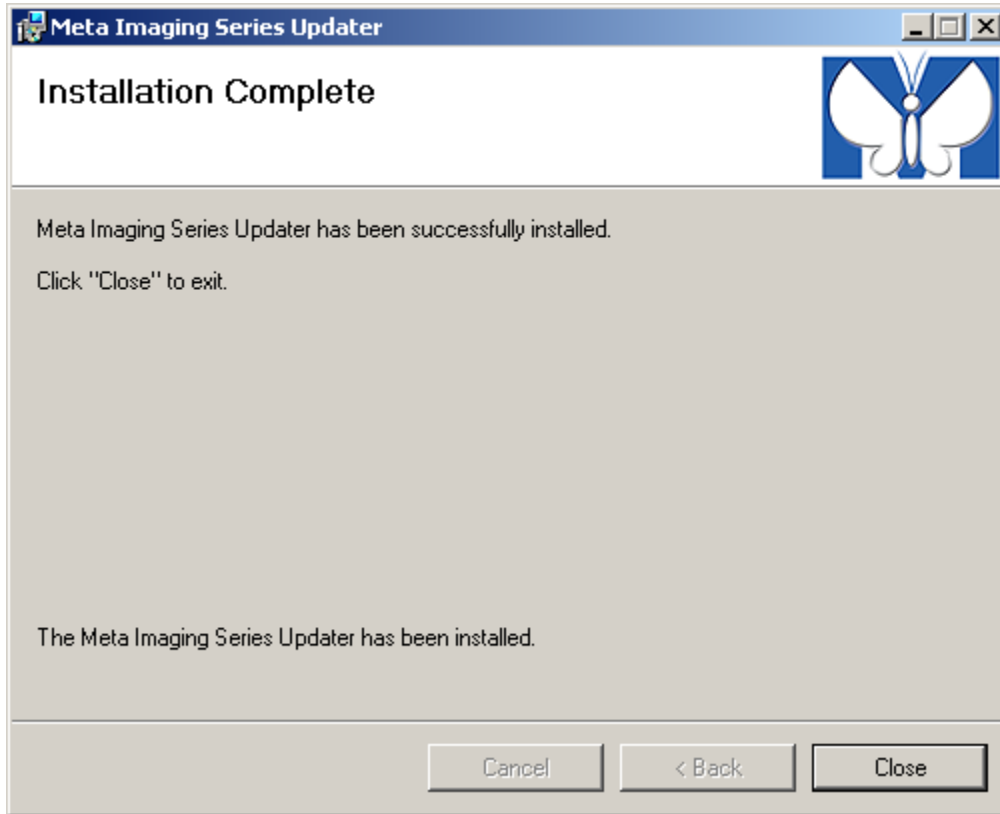
8d. Select the folder in which *Meta Imaging Series* is installed. In our example, that folder is the *MM* folder on drive *C*. Once you select the folder the *Select Installation Folder* dialog appears with the folder's name listed:



8e. Choose *Next*. The *Confirm Installation dialog* appears:



8f. Choose *Next*. The Wizard installs the *Updater* and then displays the *Installation Complete* dialog:

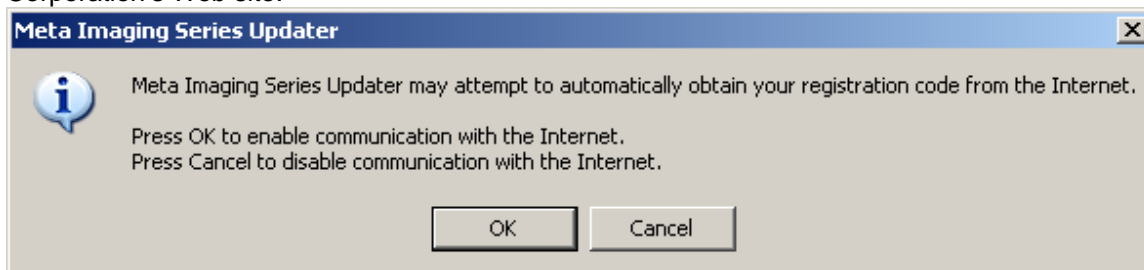


8g. Choose *Close*.

## Running the *Meta Imaging Series Updater* to apply an update.

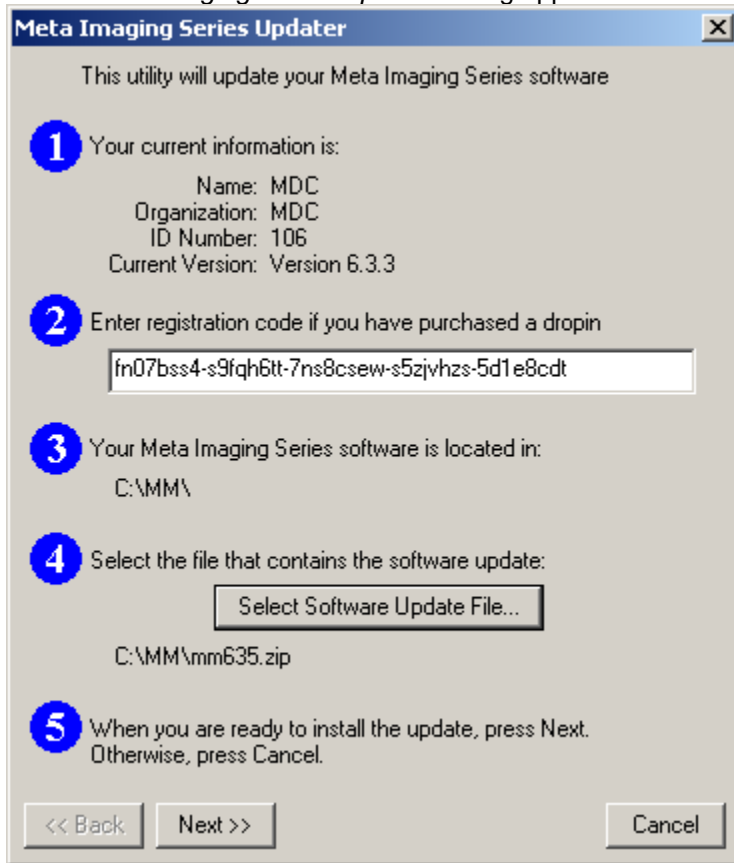
**Note:** If the computer to be updated is not attached to the internet you must get the registration and authorization code for version 6.3 using another computer and the website: <http://www.meta.moleculardevices.com/authorize/authorizex.php>

1. Start the *Meta Imaging Series Updater*.
2. The program offers to obtain your registration code by connecting with Molecular Devices Corporation's Web site:



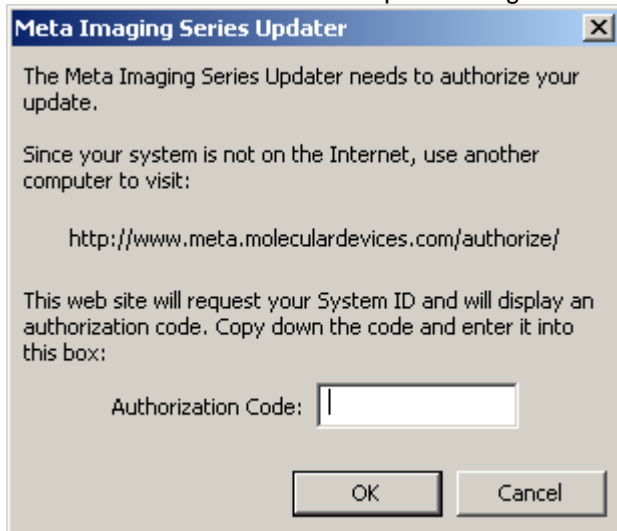
Choose *OK*.

3. The *Meta Imaging Series Updater* dialog appears

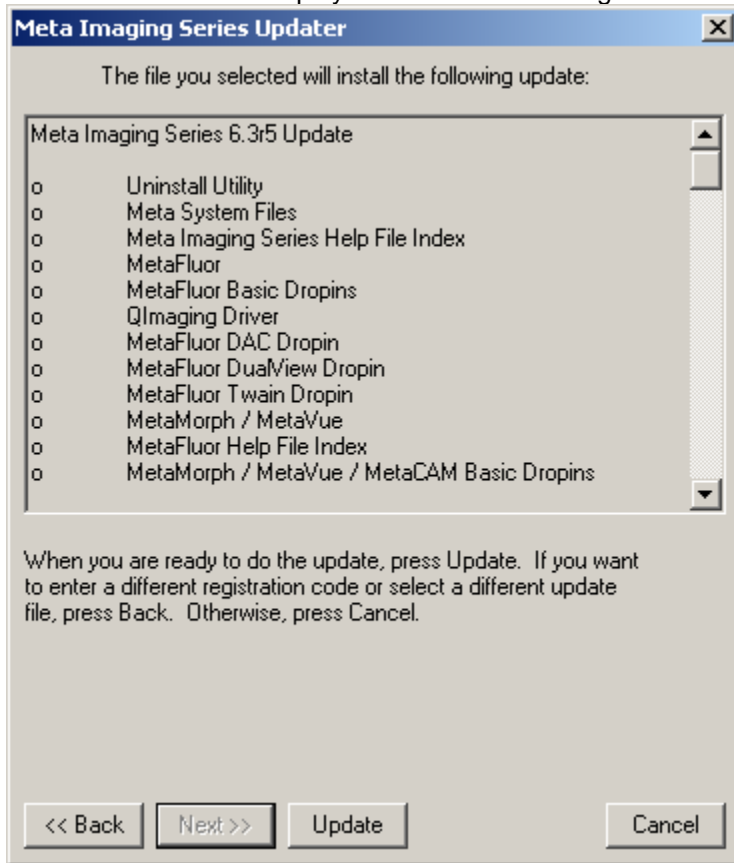


4. Choose *Select Software Update File*, and then browse to the appropriate update file (MM63#.zip). Once that completes, the *Updater* displays the *Meta Imaging Series Updater* dialog with the correct update file listed, as shown above.

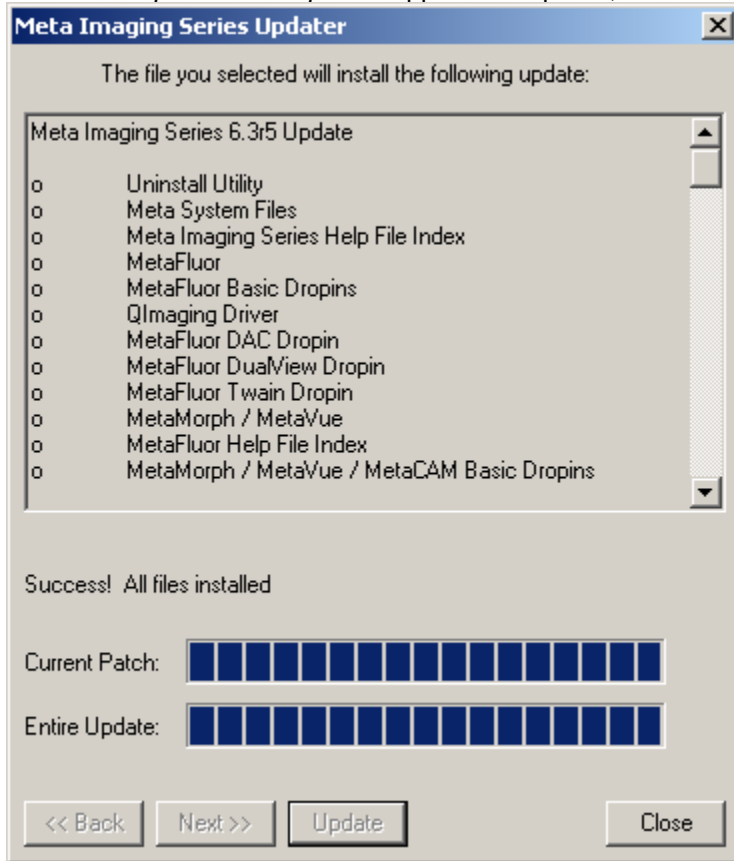
5. If you are not attached to the internet you must enter the registration code for version 6.3. Enter the authorization code in the subsequent dialog.



6. Choose *Next*. This displays a confirmation dialog:



7. Choose *Update*. The *Updater* applies the update, and finishes by reporting success:



8. Choose *Close*. The *Updater* dialog closes.