

Installing Diagnostic Instruments SPOT cameras with MetaMorph Software v6.0 through v6.3

ABSTRACT

New and updated installations of *Meta Imaging Series* software now require the separate installation of the complete version of the Diagnostic Instruments SPOT camera software specifically intended for the Diagnostic Instruments camera being installed.

OVERVIEW

Use these instructions to install Diagnostic Instruments SPOT cameras running under Microsoft Windows 2000 Professional and Windows XP Professional. This procedure applies to Meta Imaging Series software versions from 6.0r0 through 6.3.

Each version of the *Meta Imaging Series* software requires the appropriately associated version of Diagnostic Instruments SPOT software. To determine the version of SPOT software needed, click **Find out more** under **Manufacturer's information** on the **Supported Hardware** page of the Meta Imaging Series Software *Online Support* website page at <http://support.universal-imaging.com/hardware.cfm>.

ARTICLE #
T20038

PRODUCTS
MetaMorph® 6.0 to 6.3
MetaVue 6.0 to 6.3
MetaXpress™
Discovery-1™

CREATED
07-March-2005

LAST UPDATED
15-March-2005

NOTES

- Meta Imaging Series 6.3 requires a *full installation* of Diagnostic SPOT software version 4.1.1, 4.1.2, or 4.5.3 to run the Diagnostic Instruments SPOT cameras.
- You **must** install Diagnostics SPOT Software **first** before installing the hardware. Refer to the installation instructions later in this document.

UPGRADING SPOT SOFTWARE FOR CAMERAS REQUIRING A CHIPINFO.DAT FILE

Some SPOT camera models use a *CHIPINFO.DAT* file that is included on the SPOT Software CD supplied with the camera. Consequently, whenever you upgrade your SPOT software, these cameras might also require an updated *CHIPINFO.DAT* file. You can confirm whether your camera requires this file by contacting your camera vendor or Diagnostic Instruments, Inc.

SUPPORTED CAMERAS

The following Diagnostic Instruments SPOT cameras are supported with the Meta Imaging Series Software version 6.3. If your camera is not listed here, refer to the **Supported Hardware** page on the Meta Imaging Series Software *Online Support* web page for information about your model of camera.

- SPOT RT Slider
- SPOT RT Monochrome
- SPOT RT-SE
- SPOT Insight Mosaic
- SPOT Insight QE Mosaic
- SPOT Insight Monochrome
- SPOT Insight QE Monochrome
- SPOT RT-KE
- SPOT Insight LCD

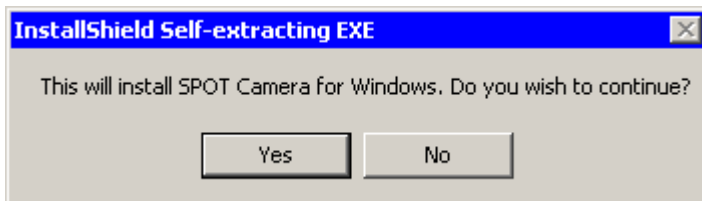
- SPOT RT 1200 Monochrome
- SPOT RT 950
- SPOT RT-SE-18

INSTALLING THE MANUFACTURER'S SOFTWARE

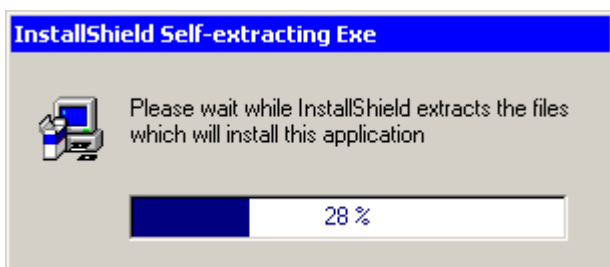
Caution: Do not install the PCI card until *after* you install the manufacturer's software.

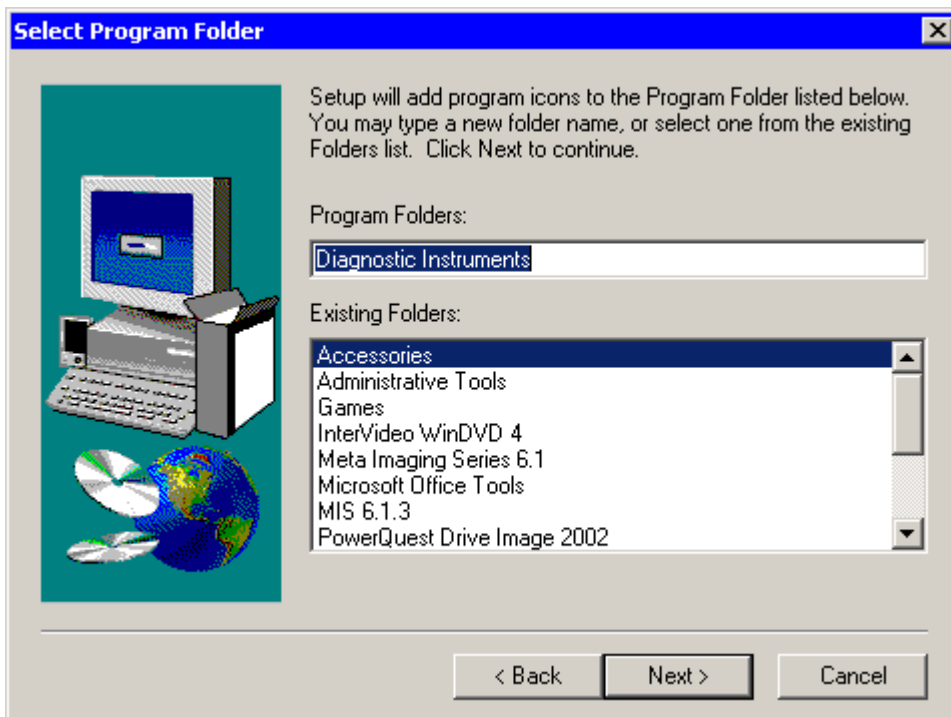
NOTE: Depending on the version of the Diagnostic SPOT software that you are installing, the installation dialog boxes that you see while installing your SPOT software might be different than the ones shown. The following procedure and accompanying dialog boxes represents a typical installation procedure.

1. If you are installing from the manufacturer's CD, it should automatically launch and run when you put the CD in the drive. If it does not, find the file called *setup.exe*, and double-click the file name. If you are installing from a downloaded file, after the download is complete, click the file called *SPOT.exe*.
2. Accept all the defaults settings during the installation. The following figures are taken from the installation of a SPOT RT Slider. Use them as a guide for installing the Diagnostic Instruments SPOT Camera software.



Response: Click Yes.

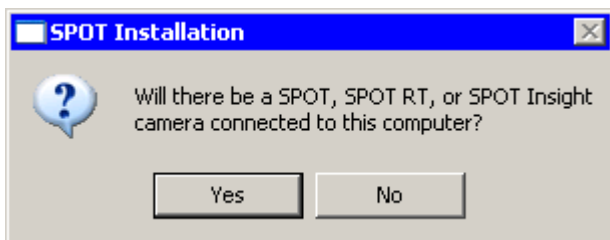




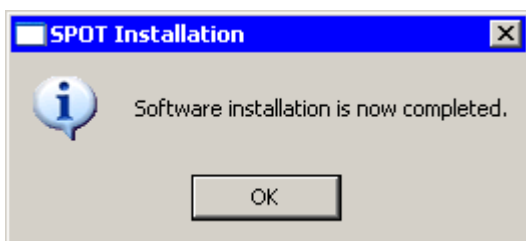
Response: Leave Program Folder as *Diagnostic Instruments*, and click *Next*.



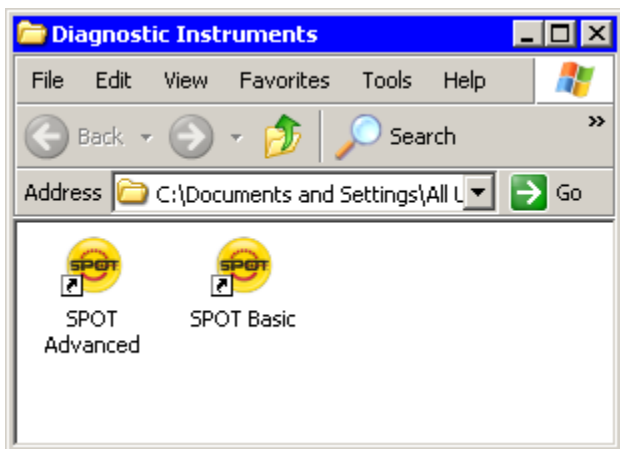
Response: Leave the Destination Directory as *C:\SPOTCam*, then click *Next*.



Response: Click *Yes*.



Response: Click *OK*.



3. When the installation is complete, the preceding dialog box will appear. Shut Down the computer and use the following instructions to install the Diagnostic Instruments SPOT Camera PCI Card and camera.

INSTALLING THE PCI CARD AND CAMERA

Caution: Before beginning installation of your PCI card, be sure to put on and connect appropriate Electro-Static Discharge (ESD) protection.

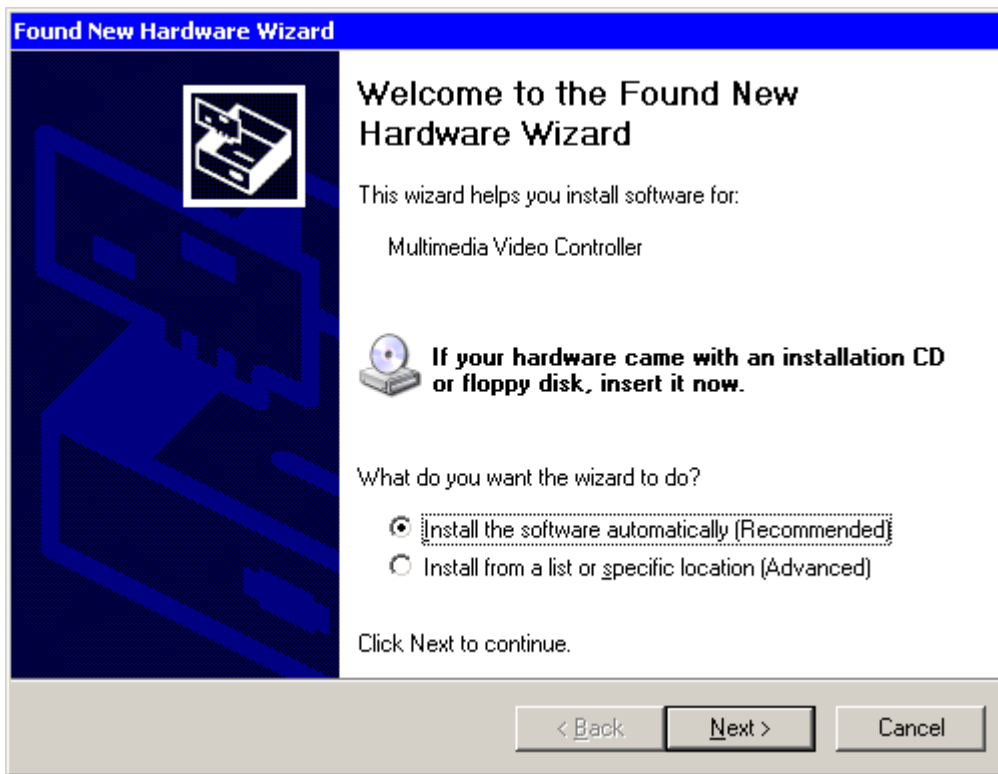
To install your Diagnostic Instruments SPOT Camera PCI card and camera, complete the following procedure:

FOR RESEARCH USE ONLY. NOT FOR USE IN DIAGNOSTIC PROCEDURES.

MOLECULAR DEVICES, the Molecular Devices logo, METAMORPH, META IMAGING SERIES, METAFUOR and the MetaMorph logo are trademarks of Molecular Devices, Inc. ©2010 Molecular Devices, Inc. Printed in the U.S.

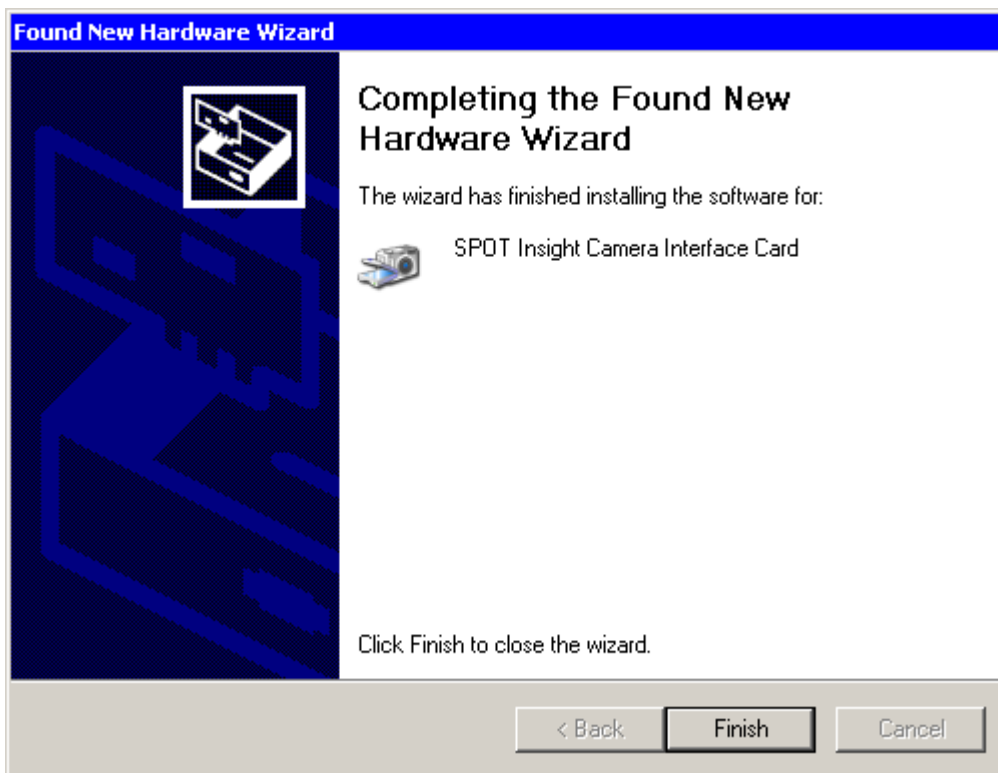
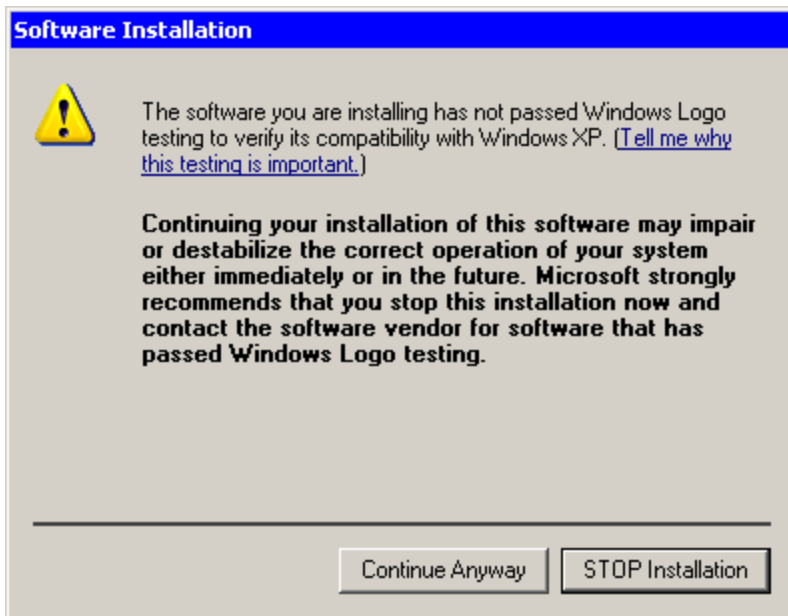
1. Disconnect the computer power cord from the back of the computer.
2. Insert the PCI Card in to an available PCI slot.
3. Connect the data cable from the PCI card to the camera head.
4. Connect the power cable from the camera head to the power supply.
5. Connect the power supply to the AC power source.
6. Reconnect the computer power cord to the back of the computer.
7. Turn on the computer. Windows should detect the card, and select and install the software automatically.

NOTE: Use the following figures as a guide for completing the Diagnostic Instruments SPOT Camera PCI card and camera installation.



Response: Click *Install the software automatically*, then click *Next*.

8. If the Windows Logo testing screen appears, click *Continue Anyway*.



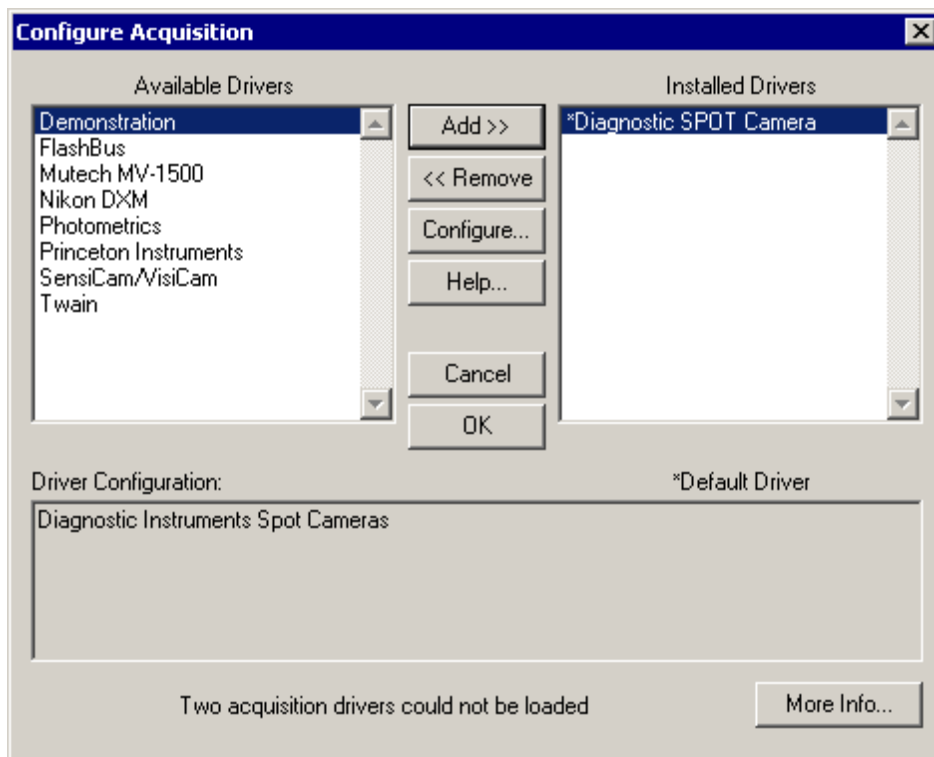
LOADING THE SPOT DRIVER FROM THE META IMAGING SERIES ADMINISTRATOR

To load the SPOT driver from the Meta Imaging Series Administrator, complete the following procedure:

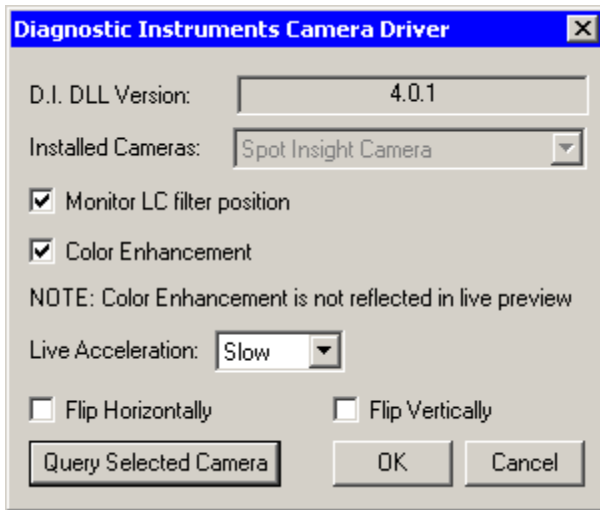
FOR RESEARCH USE ONLY. NOT FOR USE IN DIAGNOSTIC PROCEDURES.

MOLECULAR DEVICES, the Molecular Devices logo, METAMORPH, META IMAGING SERIES, METAFUOR and the MetaMorph logo are trademarks of Molecular Devices, Inc. ©2010 Molecular Devices, Inc. Printed in the U.S.

1. Click *Start>Programs>Meta Imaging Series 6.x>Meta Imaging Series Administrator*. The Meta Imaging Series Administrator opens.
2. Click *Configure Hardware*. The Configure Hardware dialog box opens.
3. Click *Configure Acquisition*. The Configure Acquisition dialog box opens.
4. Locate **Diagnostic SPOT Camera** driver listed under *Available Drivers*.
5. Click **Diagnostic SPOT Camera** to select it, then click *Add>>*. The selection moves to *Installed Drivers*.



6. Click *Configure*. The Diagnostic Instruments Camera Driver dialog box opens.
7. In the *D.I. DLL Version* box, verify that the version matches that of your SPOT software.



8. Click *Cancel* to close the Diagnostic Instruments Camera Driver dialog box.
9. Close the Meta Imaging Series Administrator.

© 2005 Molecular Devices Corporation