

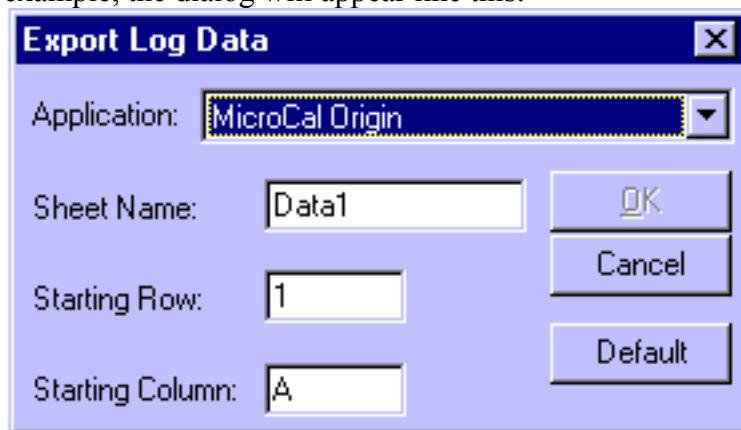
## Data Logging to MicroCal Origin

### Abstract

One of the choices in the Open Data Log -- Log Measurements to Dynamic Data Exchange (DDE) is to log data to MicroCal Origin.

### Instructions

On occasion we have received reports that the OK button to open the data log is always grayed out, meaning that data cannot be logged to Origin. For example, the dialog will appear like this:



This tech note explains why that is and how to work around the problem.

### Windows 95 / 98

When you try to open a DDE connection to MicroCal Origin, MetaMorph looks in the WIN.INI file (normally located in c:\windows\WIN.INI) to see where Origin is located. It searches in the WIN.INI for a section titled [embedding]. Within this section, it looks for a line starting with OrgPlot=. For example, the relevant part of WIN.INI might look like this:

[embedding]

OrgPlot=Origin Graph,Origin Graph,c:\ori50\origin50.exe,picture

With versions of Origin starting at version 4.0, this line may not be in the WIN.INI file, and therefore MetaMorph can't figure out where Origin is located. To correct this problem, run the SYSEDIT program that comes with Windows, choose the WIN.INI window, and search for the [embedding] section. Then add in the OrgPlot= line, making sure that the line looks exactly like the one pictured above, except with the path to your copy of Origin substituted for "c:\ori50\origin50.exe" in our example. Please call Universal Imaging technical support if you need assistance with this.

**Keywords:** metamorph data logging microcal origin

**Issue Type:** Other Software

**Document ID**  
T10220

**Product**  
MetaMorph

**Created**  
07-Apr-2000

**Windows NT**

Under Windows NT, MetaMorph looks in the Registry to determine where Origin is located. To set this up on your computer, run REGEDIT by choosing the Run command from the Start button and entering "REGEDIT" as the program to run.

Once in REGEDIT, navigate to the following key:

HKEY\_LOCAL\_MACHINE\Software\Microsoft\WindowsNT\CurrentVersion\Embedding

Once there, choose New from the Edit Menu and create a new "String Value".

Type "OrgPlot" as the new String Value.

Double click on OrgPlot, this will open the edit string dialog box. Enter:

Origin Graph,Origin Graph,C:"Directory path to Origin\*.exe",picture

Once this is entered, exit REGEDIT and start MetaMorph. You should now be able to open an DDE link to MicroCal Origin.